



INDUSTRIES WE SUPPORT

-  **Dredging**
-  **Mining**
-  **Construction**
-  **Marine and coastal works**
-  **Wetland restoration**
-  **River and canal desilting**

ABOUT THE COMPANY

HAWK delivers advanced excavation attachments and specialty systems designed to extend machine capability on land and in water. Our equipment is trusted by contractors working in dredging, infrastructure development, environmental remediation, marine construction, and industrial earthmoving. We focus on innovation, durability, and safety for demanding field operations.

OFFICE ADDRESS

18511, Beaumont Hwy, Building D,
Houston, TX, 77049
(713) 230-8725



HAWK

HIGH-PERFORMANCE EXCAVATION AND DREDGING SOLUTIONS BUILT FOR CONSTRUCTION, MINING, RIVER WORKS, WETLANDS, AND COASTAL PROJECTS. ENGINEERED FOR EFFICIENCY, REACH, AND CONTROL IN EVERY ENVIRONMENT.

LONG REACH ARM

- ➔ Long reach arms for extended excavation distance
- ➔ Full long-reach excavator systems with boom, stick, and hydraulics
- ➔ Designed for dredging, river desilting, deep trenching, pond cleaning, slope shaping, and shoreline work
- ➔ Compatible with multiple excavator brands and sizes



ATTACHMENTS

➔ Buckets

A full range of digging and material handling buckets for specialized excavation work.

➔ Grapples

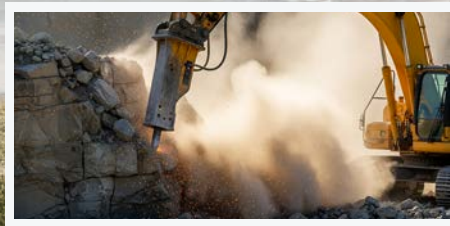
Material handling tools designed for debris removal, demolition, forestry, and sorting applications.

➔ Hydraulic Breakers

High-impact tools used for breaking rock, concrete, and tough structural materials.

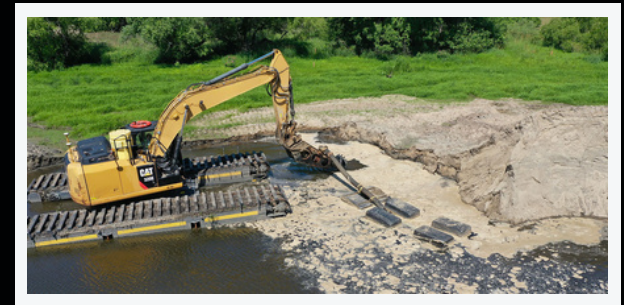
➔ Thumbs

Gripping accessories that improve control when picking, lifting, and placing irregular objects.



AMPHIBIOUS UNDERCARRIAGE

- ➔ Amphibious undercarriages for wetland, swamp, and shallow water applications
- ➔ High flotation pontoons for traction on soft terrain
- ➔ Ideal for environmental restoration, marsh excavation, flood control, and shallow dredging
- ➔ Works with long-reach arms and excavator-mounted dredge pumps



RTK GPS

- ➔ Real-time underwater positioning system
- ➔ Provides depth, cut profiles, bucket location, and accuracy for dredging
- ➔ Improves production efficiency and reduces over-digging

