



# HAWK



# HAWK LONG REACH ARM

## 20 TON CLASS

PARTS LIST & INSTALLATION MANUAL



CERT NO: TUV100 01  
2043  
ISO 9001: 2015



## 1.0 GENERAL AND SAFETY PRECAUTIONS

- 1) Wear suitable personal protective equipment.

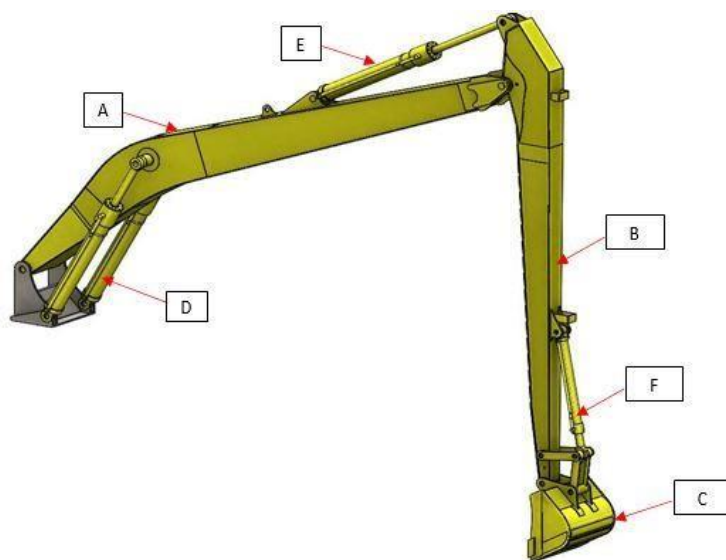


- 2) Make sure all the tools and equipment related to the long reach arm installation process are well prepared and in good condition.
- 3) Make sure the installation area is secure and only related personnel are allowed to enter it.
- 4) Post a caution sign to prevent non-related personnel from entering the installation area.
- 5) Enough manpower, at least three mechanics and one excavator operator, is required during the installation process.
- 6) Always adopt safety measures during the installation process.

## 2.0 INSTALLATION TOOLS

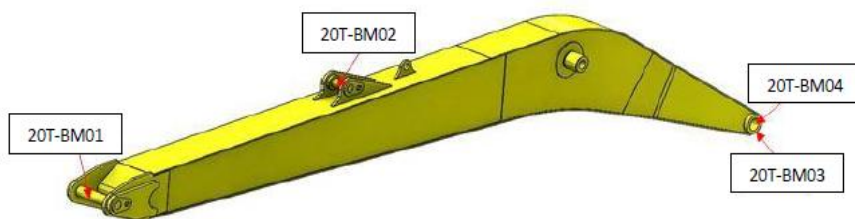
- 1) 20 or 30-ton mobile crane equipped with lifting gear (at least a 6-ton capacity).
- 2) Combination wrench and Allen key sets.
- 3) Steel hammer.

## 3.0 LONG REACH ARM PARTS LIST

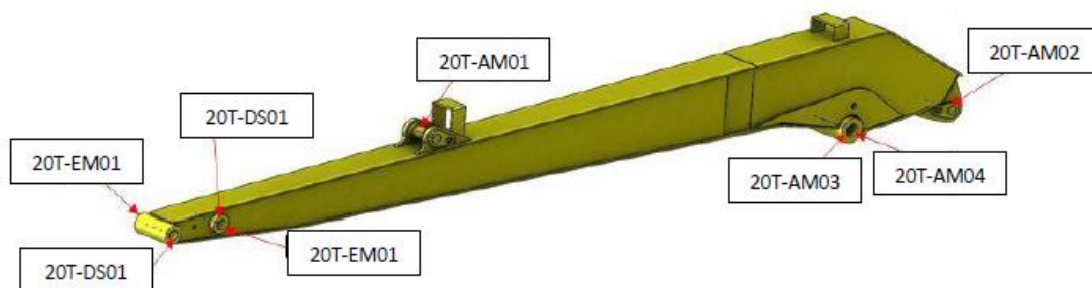


Item	Description	Quantity
------	-------------	----------

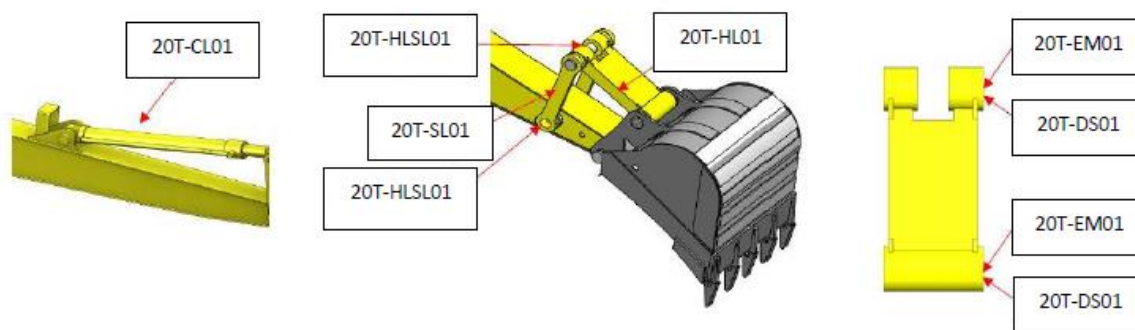
<b>A</b>	Boom	1
<b>B</b>	Arm	1
<b>C</b>	Bucket	1
<b>D</b>	Boom cylinder	2
<b>E</b>	Arm cylinder	1
<b>F</b>	Bucket cylinder	1



Item	Parts No.	Description	Quantity
1	20T-BM01	Yoke pin with flange	1 pcs
2	20T-BM02	Arm cylinder pin with flange	1 pcs
3	20T-BM03	Boom base steel bush	2 pcs
4	20T-BM04	Boom base dust seal	2 pcs



Item	Parts No.	Description	Quantity
1	20T-AM01	Bucket cylinder pin with flange	1 pcs
2	20T-AM02	Arm cylinder pin with flange	1 pcs
3	20T-AM03	Steel bush base arm booster	2 pcs
4	20T-AM04	Dust seal base arm booster	2 pcs
5	20T-EM01	Steel bush center arm booster	2 pcs
6	20T-DS01	Dust seal center arm booster	2 pcs
7	20T-EM01	Steel bush end arm booster	2 pcs
8	20T-DS01	Dust seal end arm booster	2 pcs



Item	Parts No.	Description	Quantity
1	20T-HL01	H-link	1 set
2	20T-SL01	Side-link	2 pcs
3	20T-HLSL02	H-link pin	1 pcs
4	20T-HLSL02	Side-link pin	1 pcs
7	20T-EM01	H-link booster steel bush	2 pcs
8	20T-EM01	H-link end arm steel bush	2 pcs
9	20T-DS01	H-link booster dust seal	2 pcs
10	20T-DS01	H-link end arm dust seal	2 pcs
11	20T-CL01	Bucket cylinder	1 pcs

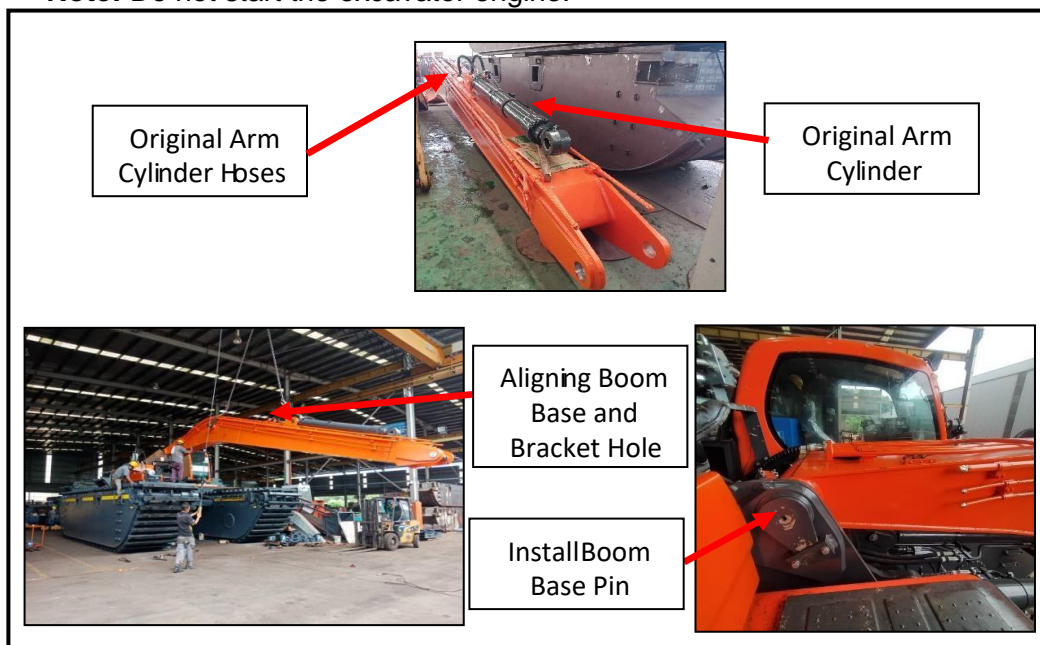


Item	Parts No.	Description	Quantity
1	20T-GP01	Solid pin	2 pcs
2	20T-GP02	Bolts come with nylon nut	2 pcs
3	20T-GP03	Bucket tooth set	5 set

## 4.0 INSTALLATION PROCEDURE

1. Install the original arm cylinder and arm cylinder hydraulic hoses onto the boom. Next, lift the excavator boom using a crane and align the boom base holes with the excavator boom bracket holes. Insert the boom base pin. Refer to Figure 4.1.

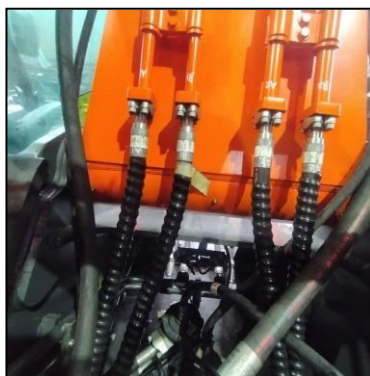
**Note:** Do not start the excavator engine.



**Figure 4.1**

2. Install the boom hydraulic hoses, follow the markings. Refer to Figure 4.2.

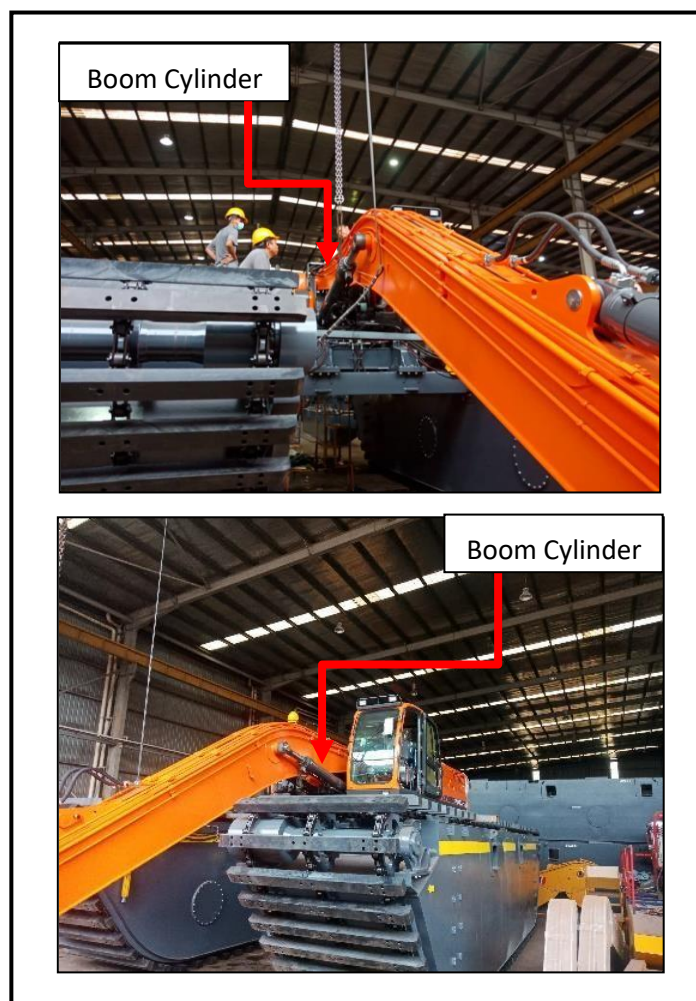
**Note:** Be sure to mark the boom hydraulic hoses based on their function during disassembly of the original standard boom. Do not start the excavator engine during the installation of hydraulic hoses. Make sure all the hydraulic lines at the boom ends are well sealed with a hydraulic cap to prevent hydraulic oil burst out.



**Figure 4.2**

3. Install the original boom cylinder by aligning the holes of the boom cylinder booster and boom cylinder. Install the left and right cylinders and then connect the grease hoses. Install the pin and make sure to lock it. Refer to Figure 4.3.

**Note:** To install the boom cylinder, the excavator engine can be started (to move the cylinder piston and extend or retract it to align the holes). Make sure all the hydraulic lines at the boom ends are well sealed with a hydraulic cap to prevent hydraulic oil burst out.



**Figure 4.3**

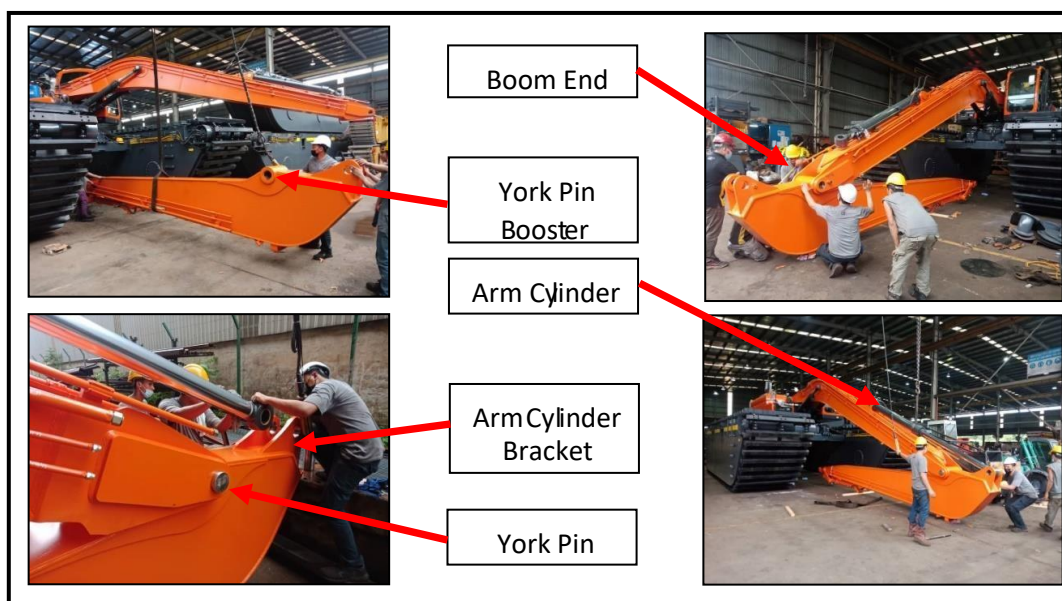
4. Flip the excavator's arm. Lift the excavator arm using the crane and place it in the center of the excavator. Align the boom end holes and the York pin booster holes. Insert the York pin and lock it. Then extend the arm cylinder and align the arm cylinder holes and arm cylinder bracket (arm side) holes. Insert the pin and lock it. Refer to Figures 4.4 and 4.4a.



**Note:** To install the arm cylinder, the excavator engine can be started (to move the cylinder piston to extend or retract it to align the holes). Make sure all the hydraulic lines at the boom ends are well sealed with a hydraulic cap to prevent hydraulic oil burst out.



**Figure 4.4**



**Figure 4.4a**

5. Connect the boom to the arm's left and right hydraulic hoses. Refer to Figure 4.5.

**Note:** Turn off the excavator engine. Make sure the hydraulic pressure has been released from the tank. Slowly open the hydraulic cap and slowly let the hydraulic oil flow out (to release the pressure inside the line). Once the pressure has fully been released, fully open the hydraulic cap and install the hydraulic hoses.



**Figure 4.5**

6. Install the bucket by aligning the bucket upholder holes with the arm's end booster and the bucket upholder holes with the H-link. Install the pins and lock them. Refer to Figure 4.6.



**Figure 4.6**

**Thank you for taking the time to read this manual and parts list. We hope you have a pleasant experience using our long reach arm product. For any additional information, do not hesitate to contact us.**

[HawkExcavator.com/contact](http://HawkExcavator.com/contact)

Version-3 12/9/2021