



# HAWK

Reach Beyond, with HAWK.

**VISIT SITE NOW »**



## **CAT 307.5 Excavator**

**VISIT SITE NOW »**

[www.hawkexcavator.com](http://www.hawkexcavator.com)

| (619) 335 8822

| [info@hawkexcavator.com](mailto:info@hawkexcavator.com)



# HAWK

Reach Beyond, with HAWK.

[VISIT SITE NOW >>](#)

## Features:

The Cat® 307.5 Mini Excavator delivers maximum power and performance in a mini size to help you work in a wide range of applications.

### ALL DAY COMFORT

A sealed and pressurized cab is equipped with an improved air conditioning system, adjustable wrist rests and a suspension seat to help keep you working comfortably all day long.

### EASY TO OPERATE

Controls are easy to use and the intuitive Next Generation Monitor provides customizable machine operator preferences and easy to read machine information.

### STICK STEER TRAVEL MODE

Moving around the job site is even easier with the Cat Stick Steer option. Easily switch from traditional travel controls with levers and pedals to joystick controls with a push of a button. The benefit of less effort and improved control is in your hands!

### BIG PERFORMANCE IN A MINI DESIGN

Increased lifting, swinging, travel and multi-functioning performance helps you get the job done more efficiently. Dig-to-blade and dozer blade float features allow for easy clean up.

### SAFETY ON THE JOB SITE

Your safety is our top priority. The Cat mini excavator is designed to help keep you safe on the job. A back-up camera, courtesy work lights and a fluorescent retractable seat belt with optional seat belt reminder system are just a few of the safety features we've built into the machine.

## CAT 307.5 Excavator



### SIMPLE SERVICE FOR LESS DOWNTIME

Maintenance is quick and easy on the Cat mini excavator. Routine check points are easy to access at ground level with grouped service points and robust service panels.

### LOWER OPERATING COSTS

Equipped with features such as auto idle, auto engine shutdown, and efficient hydraulics with a variable displacement pump, the Cat mini excavator was designed with reducing your operating costs in mind.

### UNMATCHED DEALER SUPPORT

Your Cat dealer is here to help you reach your business goals. From providing equipment solutions to operator training to service needs and beyond, your Cat dealer is ready to help.

[VISIT SITE NOW >>](#)



[VISIT SITE NOW >>](#)

### PRODUCT SPECIFICATIONS

#### Engine

Engine Model Cat C2.4 Turbo

#### Rated Net Power @ 2,400 rpm

ISO 9249, EEC 80/1269 41.7 kW 55.9 hp

#### Gross Power

ISO 14396 43.2 kW 57.9 hp

Bore 87 mm 3.4 in

Stroke 102 mm 4 in

Displacement 2.43 L 148 in<sup>3</sup>

#### Weights

Minimum Operating Weight with Cab\* 7532 kg 16,605 lb

Maximum Operating Weight with Cab\*\* 8233 kg 18,152 lb

\* Minimum Weight is based on steel tracks, no counterweight, operator, full fuel tank, long stick, blade and no bucket.

\*\* Maximum Weight is based on steel tracks with rubber pads, counterweight, operator, full fuel tank, long stick, blade and no bucket.

#### Weight Increase from Minimum Configuration

Counterweight 250 kg 552 lb

Long Stick 82 kg 181 lb

Steel Tracks with Pads 285 kg 628 lb

[VISIT SITE NOW >>](#)



[VISIT SITE NOW >>](#)

## Travel System

Travel Speed – High	5.0 km/h	3.1 mph
Travel Speed – Low	3.1 km/h	1.9 mph
Maximum Traction Force – High Speed	26.1 kN	5,856 lb
Maximum Traction Force – Low Speed	62.4 kN	14,035 lb
Ground Pressure – Minimum Weight	32.7 kPa	5 psi
Ground Pressure – Maximum Weight	35.7 kPa	5 psi
Gradeability (maximum)	30 degrees	

## Service Refill Capacities

Cooling System	10 L	2.6 gal
Engine Oil	9.5 L	3.0 gal
Fuel Tank	145 L	38 gal
Hydraulic Tank	53 L	14 gal
Hydraulic System	140 L	27 gal

## Hydraulic System

Load Sensing Hydraulics with Variable Displacement Piston Pump

Pump Flow @ 2,400 rpm	167 L/min	44 gal/min
Operating Pressure – Equipment	285 bar	4,134 psi
Operating Pressure – Travel	285 bar	4,134 psi
Operating Pressure – Swing	250 bar	3,626 psi

[VISIT SITE NOW >>](#)



[VISIT SITE NOW >>](#)

### Auxiliary Circuit – Primary

Flow	131 L/min	35 gal/min
Pressure	285 bar	4,134 psi

### Auxiliary Circuit – Secondary

Flow	33 L/min	9 gal/min
Pressure	285 bar	4,134 psi

### Digging Force – Stick (standard)

37.8 kN      8,504 lb

### Digging Force – Stick (long)

33.7 kN      7,579 lb

### Digging Force – Bucket

54.6 kN      12,272 lb

\* Flow and pressure are not combinable. Under load, as flow rises pressure goes down.

### Swing System

Machine Swing Speed      10 rpm

### Blade

Width (Standard)	2280 mm	90 in
Height	431 mm	17 in

### Certification – Cab

Roll Over Protective Structure (ROPS)	ISO 12117-2:2008
Tip Over Protective Structure (TOPS)	ISO 12117:1997
Top Guard	ISO 10262:1998 (Level II)

### Sound

Operator Sound Pressure 72 dB(A) (ISO 6396:2008)	72 dB(A)
Average Exterior Sound Pressure 98 dB(A) (ISO 6395:2008)	98 dB(A)

• European Union Directive “2000/14/EC”

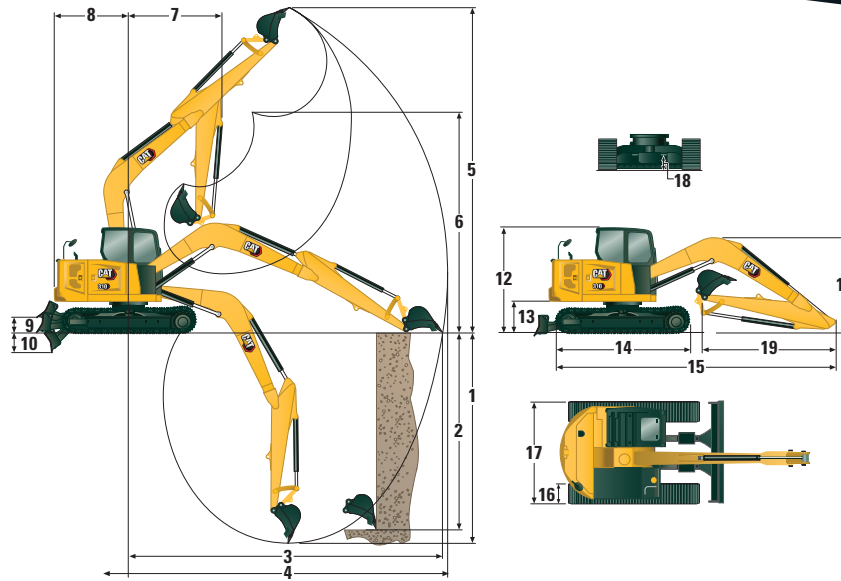
[VISIT SITE NOW >>](#)



# HAWK

Reach Beyond, with HAWK.

**VISIT SITE NOW >>**



## Dimensions

	Standard Stick	Long Stick
<b>1</b> Dig Depth	4107 mm (162 in)	4649 mm (183 in)
<b>2</b> Vertical Wall	3604 mm (142 in)	4120 mm (162 in)
<b>3</b> Maximum Reach at Ground Level	6152 mm (242 in)	6671 mm (263 in)
<b>4</b> Maximum Reach	6297 mm (248 in)	6805 mm (268 in)
<b>5</b> Maximum Dig Height	7341 mm (289 in)	7758 mm (305 in)
<b>6</b> Maximum Dump Clearance	5293 mm (208 in)	5710 mm (225 in)
<b>7</b> Boom in Reach	1681 mm (66 in)	2250 mm (89 in)
<b>8</b> Tail Swing with Counterweight	1995 mm (79 in)	1995 mm (79 in)
Tail Swing without Counterweight	1800 mm (71 in)	1800 mm (71 in)
<b>9</b> Maximum Blade Height	363 mm (14 in)	363 mm (14 in)
<b>10</b> Maximum Blade Depth	414 mm (16 in)	414 mm (16 in)
<b>11</b> Transport Height	2558 mm (101 in)	2656 mm (105 in)
<b>12</b> Cab Height	2534 mm (100 in)	2534 mm (100 in)
<b>13</b> Swing Bearing Height	756 mm (30 in)	756 mm (30 in)
<b>14</b> Overall Undercarriage Length	2760 mm (109 in)	2760 mm (109 in)
<b>15</b> Overall Shipping Length	6144 mm (242 in)	6257 mm (246 in)
<b>16</b> Track Belt/Shoe Width	450 mm (18 in)	450 mm (18 in)
<b>17</b> Overall Track Width	2200 mm (87 in)	2200 mm (87 in)
Width over Upper House	2250 mm (89 in)	2250 mm (89 in)
<b>18</b> Ground Clearance	370 mm (15 in)	370 mm (15 in)
<b>19</b> Stick Length	1665 mm (66 in)	2208 mm (87 in)

**VISIT SITE NOW >>**



### Lift Capacities – Minimum Configuration\*

Lift Point Height			3 m (9.8 ft)			4.5 m (14.8 ft)			Lift Point Radius (Maximum)				
			Over Front			Over Side	Over Front			Over Front			m (ft)
			Blade Down	Blade Up	Over Side		Blade Down	Blade Up	Over Side	Blade Down	Blade Up	Over Side	
4.5 m (14.8 ft)	Standard Stick	kg (lb)	2248 (4,956)	2248 (4,956)	2257 (4,976)				1113 (2,454)	1113 (2,454)	1113 (2,454)	4.41 (14.5)	
	Long Stick	kg (lb)				1734 (3,823)	1734 (3,823)	1759 (3,878)	1090 (2,403)	1090 (2,403)	1090 (2,403)	5.03 (16.5)	
3 m (9.8 ft)	Standard Stick	kg (lb)	2728 (6,014)	2728 (6,014)	2758 (6,080)	2141 (4,720)	1646 (3,629)	1461 (3,221)	1047 (2,308)	1047 (2,308)	1047 (2,308)	5.17 (17.0)	
	Long Stick	kg (lb)	2227 (4,910)	2227 (4,910)	2220 (4,894)	1915 (4,222)	1915 (4,222)	1475 (3,252)	1038 (2,288)	1038 (2,288)	1038 (2,288)	5.71 (18.7)	
1.5 m (4.9 ft)	Standard Stick	kg (lb)	3466 (7,641)	2899 (6,391)	2488 (5,485)	2341 (5,161)	1551 (3,419)	1367 (3,014)	1090 (2,403)	1090 (2,403)	1090 (2,403)	5.43 (17.8)	
	Long Stick	kg (lb)	3140 (6,923)	3140 (6,923)	2535 (5,589)	2174 (4,793)	1545 (3,406)	1359 (2,996)	1075 (2,370)	1075 (2,370)	845 (1,863)	5.95 (19.5)	
0 m (0 ft)	Standard Stick	kg (lb)	3678 (8,109)	2692 (5,935)	2294 (5,057)	2401 (5,293)	1470 (3,241)	1287 (2,837)	1250 (2,756)	1250 (2,756)	1017 (2,242)	5.27 (17.3)	
	Long Stick	kg (lb)	3594 (7,923)	2663 (5,871)	2261 (4,985)	2339 (5,157)	1436 (3,166)	1252 (2,760)	1207 (2,661)	980 (2,161)	847 (1,867)	5.80 (19.0)	

\* Minimum Weight includes steel tracks, no counterweight, operator, full fuel tank, blade and no bucket.

### Lift Capacities – Maximum Configuration\*\*

Lift Point Height			3 m (9.8 ft)			4.5 m (14.8 ft)			Lift Point Radius (Maximum)				
			Over Front			Over Side	Over Front			Over Front			m (ft)
			Blade Down	Blade Up	Over Side		Blade Down	Blade Up	Over Side	Blade Down	Blade Up	Over Side	
4.5 m (14.8 ft)	Standard Stick	kg (lb)	2252 (4,965)	2252 (4,965)	2261 (4,985)				1110 (2,447)	1110 (2,447)	1110 (2,447)	4.43 (14.5)	
	Long Stick	kg (lb)				1744 (3,845)	1744 (3,845)	1768 (3,898)	1088 (2,399)	1088 (2,399)	1088 (2,399)	5.05 (16.6)	
3 m (9.8 ft)	Standard Stick	kg (lb)	2743 (6,047)	2743 (6,047)	2774 (6,116)	2145 (4,729)	2145 (4,729)	1681 (3,706)	1047 (2,308)	1047 (2,308)	1047 (2,308)	5.18 (17.0)	
	Long Stick	kg (lb)	2252 (4,965)	2252 (4,965)	2245 (4,949)	1920 (4,233)	1920 (4,233)	1929 (4,253)	1038 (2,288)	1038 (2,288)	1038 (2,288)	5.72 (18.8)	
1.5 m (4.9 ft)	Standard Stick	kg (lb)	3477 (7,665)	3477 (7,665)	2863 (6,312)	2345 (5,170)	1800 (3,968)	1586 (3,497)	1092 (2,407)	1092 (2,407)	1092 (2,407)	5.43 (17.8)	
	Long Stick	kg (lb)	3155 (6,956)	3155 (6,956)	3208 (7,072)	2179 (4,804)	1794 (3,955)	1578 (3,479)	1077 (2,374)	1077 (2,374)	1077 (2,374)	5.95 (19.5)	
0 m (0 ft)	Standard Stick	kg (lb)	3675 (8,102)	3136 (6,914)	2674 (5,895)	2398 (5,287)	1720 (3,792)	1507 (3,322)	1255 (2,767)	1255 (2,767)	1255 (2,767)	5.26 (17.2)	
	Long Stick	kg (lb)	3596 (7,928)	3596 (7,928)	2639 (5,818)	2339 (5,157)	1685 (3,715)	1472 (3,245)	1211 (2,670)	1211 (2,670)	1009 (2,224)	5.79 (19.0)	

\*\* Maximum Weight includes steel tracks with rubber pads, counterweight, operator, full fuel tank, blade and no bucket.



**VISIT SITE NOW »**

### EQUIPMENT

#### ENGINE

- Cat C2.4 Diesel Engine (U.S. EPA Tier 4 Final/ EU Stage V) – Electronic Engine, Turbo, Diesel Particulate Filter (DPF)
- Automatic Engine Idle
- Automatic Engine Shutdown
- Automatic Swing Brake
- Automatic Two Speed Travel
- Fuel Water Separator with Indicator
- Radial Seal – Double Element Air Filter
- Extended Life Coolant, -37° C (-35° F)

#### HYDRAULICS

- Smart Tech Electronic Pump
- Variable Displacement Piston Pump
- Load Sensing/Flow Sharing Hydraulics
- Power On Demand
- Hydraulic Temperature Monitoring
- Certified Accumulator
- HYDO Advanced Hydraulic Oil

#### OPERATOR ENVIRONMENT

- Sealed and Pressurized Cab
- Operator Sound Pressure 72 dB(A) ISO 6396
- Stick Steer Mode
- Travel Cruise Control
- Control Pattern Changer
- Adjustable Wrist Rests
- Molded Footrests
- Removable, Washable Floor Mat
- Travel Pedals and Hand Levers

- Cat Key with Passcode Option
- HVAC with Automatic Temperature Control
- Hydraulic Lockout Controls
- Integrated Lower Front Window
- Assisted Front Window Overhead Storage
- Rear Window Emergency Exit
- Fabric, High Back, Suspension Seat
- Retractable Seat Belt (75 mm/3 in)
- Coat Hook
- Cup Holder
- LED Interior Light
- Literature Holder
- 12V Power Socket
- Radio – Bluetooth®, USB, Auxiliary, Microphone
- Skylight
- Mounting Bosses for Top and Front Guards
- ROPS – ISO 12117-2:2008
- TOPS – ISO 12117:1997
- Top Guard – ISO 10262:1998 (Level II)
- Color LCD Monitor
  - Fuel Level and Coolant Temperature Gauges
  - Maintenance and Machine Monitoring
  - Performance and Machine Adjustments
  - Numeric Security Code
  - Multiple Languages
  - Camera Ready
  - Hour Meter with Wake Up Switch
  - Jog Dial Control Interface

#### UNDERCARRIAGE

- Greased and Lubricated Track
- Hydraulic Track Adjusters
- Tie Down Eyes on Track Frame
- Dozer Blade
- Dozer Float
- Bolt-on, Reversible Wear Edge
- Steel Tracks (450 mm/17.7 in wide)

#### BOOM, STICK AND LINKAGES

- One Piece Boom (3700 mm/145.7 in)
- Standard Stick (1665 mm/65.6 in) or Long Stick (2200 mm/86.6 in)
- Front Shovel Capable (Pin-On/ Manual Coupler/Hydraulic Coupler – not available in all regions)
- Thumb Ready (not available in all regions)
- Certified Lifting Eye (not available in all regions)

#### ELECTRICAL

- 12 Volt Electrical System
- 60 Ampere Alternator
- 900 CCA Maintenance Free Battery
- Battery Disconnect
- Ignition Key Stop Switch
- Signaling/Warning Horn
- Product Link™ Elite Lite (regulations apply)
- Travel Alarm

### OPTIONAL EQUIPMENT

#### OPERATOR ENVIRONMENT

- Rain Visor
- Air Suspension Heated Seat

#### ELECTRICAL

- Rearview Camera
- Rotating Beacon

#### OTHER

- Attachments including Buckets, Augers and Hammers
- Steel Track with Rubber Pads
- Wide Steel Tracks (600 mm/23.6 in)
- 2nd Auxiliary Hydraulic Lines with Case Drain
- Boom and Stick Hose Burst Check Valves
- Bucket Linkage with Lift Eye
- Track Guides
- Water Jacket Heater
- Refueling Pump
- Cab Guarding

**VISIT SITE NOW »**