



HAWK

Reach Beyond, with HAWK.

VISIT SITE NOW »



CAT 374 Hydraulic Excavator

VISIT SITE NOW »

www.hawkexcavator.com

| (619) 201 8057

| info@hawkexcavator.com



[VISIT SITE NOW >>](#)

TECHNICAL SPECIFICATIONS

Configurations and features may vary by region. Please consult CAT dealer for availability in your area.

Table of Contents

Specifications	2
Engine	2
Swing Mechanism	2
Weights	3
Track	3
Drive	3
Air Conditioning System	3
Hydraulic System	3
Service Refill Capacities	4
Standards	5
Sound Performance	5
Operating Weights and Ground Pressures	5
Major Component Weights	6
Dimensions	7
Working Ranges and Forces	9
Reach Boom Lift Capacities	10
Mass Boom Lift Capacities	13
Bucket Specifications and Compatibility	19
Typical Pass Match Guide	20
Attachments Offering Guide	21
Standard and Optional Equipment	23
Dealer Installed Kits and Attachments	24
Cab Options	25
374 Environmental Declaration	26

[VISIT SITE NOW >>](#)



[VISIT SITE NOW >>](#)

SPECIFICATIONS

Engine

Engine Model	Cat® C15	
Net Power – ISO 9249	361 kW	484 hp
Engine Power – ISO 14396	362 kW	485 hp
Bore	137 mm	5.39 in
Stroke	171 mm	6.73 in
Displacement	15.2 L	928 in ³

- Meets U.S. EPA Tier 4 Final, EU Stage V, Korea Stage V, and Japan 2014 emission standards.
- Recommended for use up to 4500 m (14,760 ft) altitude with engine power derate above 3000 m (9,840 ft).
- Advertised power is tested per the specified standard in effect at the time of manufacture.
- Net power advertised is the power available at the flywheel when the engine is equipped with fan, air intake system, exhaust system and alternator.
- Engine speed at 1,700 rpm.
- Cat diesel engines are required to use ULSD (ultra-low sulfur diesel fuel with 15 ppm of sulfur or less) or ULSD blended with the following lower-carbon intensity fuels** up to:
 - 20% biodiesel FAME (fatty acid methyl ester)*
 - 100% renewable diesel, HVO (hydrotreated vegetable oil) and GTL (gas-to-liquid) fuels
 Refer to guidelines for successful application. Please consult your Cat dealer or “Caterpillar Machine Fluids Recommendations” (SEBU6250) for details.

* Engines with no aftertreatment devices can use higher blends, up to 100% biodiesel (for use of blends higher than 20% biodiesel, consult your Cat dealer).

** Tailpipe greenhouse gas emissions from lower-carbon intensity fuels are essentially the same as traditional fuels.

Swing Mechanism

Swing Speed	6.34 rpm	
Maximum Swing Torque	247 kN·m	182,200 lbf·ft

[VISIT SITE NOW >>](#)



[VISIT SITE NOW >>](#)

Weights

Operating Weight 74,700 kg 164,700 lb

- Long Variable Gauge undercarriage, Mass boom, M2.57WB (8'5") stick, XD 4.4 m³ (5.75 yd³) bucket, 650 mm (26") HD double grouser shoes and standard counterweight.

Track

Optional Track Shoes Width 650 mm 26 in

Optional Track Shoes Width 750 mm 30 in

Optional Track Shoes Width 900 mm 35 in

Number of Shoes (each side) 47

Number of Track Rollers (each side) 8

Number of Carrier Rollers (each side) 3

Drive

Maximum Gradeability 35°/70%

Maximum Travel Speed 4.1 km/h 2.5 mph

Maximum Drawbar Pull 491 kN 110,359 lbf

Air Conditioning System

The air conditioning system on this machine contains the fluorinated greenhouse gas refrigerant R134a (Global Warming Potential = 1430). The system contains 1.0 kg of refrigerant which, has a CO₂ equivalent of 1.430 metric tonnes.

Hydraulic System

Main System – Maximum Flow – Implement 896 L/min (× 2 pumps) 237 gal/min (× 2 pumps)

Swing System – Maximum Flow 247 L/min 65 gal/min

[VISIT SITE NOW >>](#)



[VISIT SITE NOW >>](#)

Hydraulic System *(Continued)*

Maximum Pressure – Equipment – Implement	37 000 kPa	5,366 psi
Maximum Pressure – Equipment – Lift Mode	38 000 kPa	5,511 psi
Maximum Pressure – Travel	35 000 kPa	5,076 psi
Maximum Pressure – Swing	35 000 kPa	5,076 psi
Boom Cylinder – Bore	190 mm	7 in
Boom Cylinder – Stroke	1792 mm	71 in
Stick Cylinder – Bore	210 mm	8 in
Stick Cylinder – Stroke	2118 mm	83 in
VB Bucket Cylinder – Bore	190 mm	7 in
VB Bucket Cylinder – Stroke	1433 mm	56 in
WB Bucket Cylinder – Bore	200 mm	8 in
WB Bucket Cylinder – Stroke	1457 mm	57 in

Service Refill Capacities

Fuel Tank Capacity	920 L	243 gal
Cooling System	71 L	19 gal
Engine Oil (with filter)	62 L	16 gal
Swing Drive	20 L	5 gal
Final Drive (each)	32 L	9 gal
Hydraulic System (including tank)	620 L	164 gal
Hydraulic Tank (including suction pipe)	326 L	86 gal
Diesel Exhaust Fluid (DEF) Tank	80 L	21 gal

[VISIT SITE NOW >>](#)



VISIT SITE NOW >>

Standards

Brakes	ISO 10265:2008
Cab/OPG (optional)	ISO 10262-2:1998 Level II
Cab/(ROPS)	ISO 12117-2:2008

Sound Performance

ISO 6395:2008 (external)	108 dB(A)
ISO 6396:2008 (inside cab)	73 dB(A)

- Hearing protection may be needed when operating with an open operator station and cab (when not properly maintained or doors/ windows open) for extended periods or in a noisy environment.

Operating Weights and Ground Pressures

	650 mm (26") HD Double Grouser Shoes		750 mm (30") HD Double Grouser Shoes		900 mm (35") HD Double Grouser Shoes	
	Weight	Ground Pressure	Weight	Ground Pressure	Weight	Ground Pressure
	kg (lb)	kPa (psi)	kg (lb)	kPa (psi)	kg (lb)	kPa (psi)
Base Machine Configurations						
Base Frame with Track Rollers and Carrier Rollers						
Standard Counterweight + Long Variable Gauge Undercarriage Base Machine						
Reach Boom + R3.6VB (11'10") Stick + 3.3 m ³ (4.32 yd ³) SD bucket	71 700 (158,200)	115 (17)	72 400 (159,700)	100 (14)	73 400 (161,900)	83 (12)
Mass Boom + M3.0WB (9'10") Stick + 4.4 m ³ (5.75 yd ³) XD bucket	75 000 (165,300)	120 (17)	75 600 (166,700)	104 (15)	76 600 (169,000)	87 (13)
Mass Boom + M2.57WB (8'5") Stick + 4.4 m ³ (5.75 yd ³) XD bucket	74 700 (164,700)	120 (17)	75 400 (166,100)	104 (15)	76 400 (168,400)	86 (13)
Removal Type Counterweight + Long Variable Gauge Undercarriage Base Machine						
Reach Boom + R3.6VB (11'10") Stick + 3.3 m ³ (4.32 yd ³) SD bucket	71 800 (158,300)	115 (17)	72 500 (159,800)	101 (15)	73 500 (162,000)	85 (12)
Mass Boom + M3.0WB (9'10") Stick + 4.4 m ³ (5.75 yd ³) XD	75 000 (165,400)	120 (17)	75 700 (166,900)	105 (15)	76 700 (169,100)	89 (13)
Mass Boom + M2.57WB (8'5") Stick + 4.4 m ³ (5.75 yd ³) XD	74 800 (164,800)	120 (17)	75 400 (166,300)	105 (15)	76 400 (168,500)	89 (13)

All operating weights include a 90% fuel tank with 75 kg (165 lb) operator.

VISIT SITE NOW >>



VISIT SITE NOW »

Major Component Weights

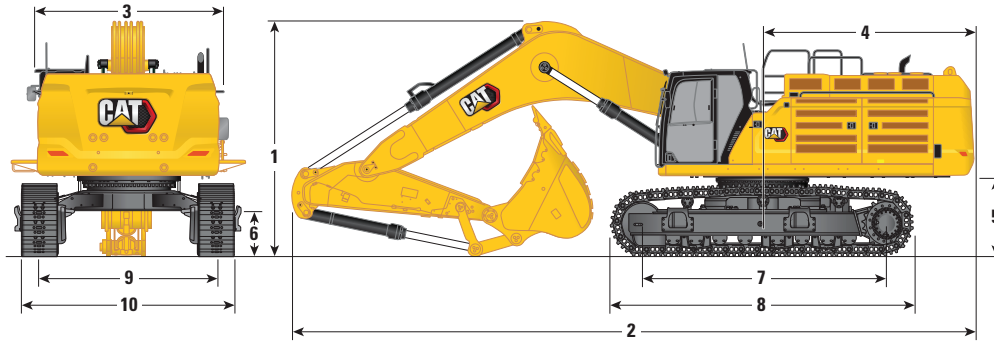
	kg	lb
Base Machine Weight: including upperframe, undercarriage, counterweight, boom cylinders, without boom, stick, bucket, stick cylinder, bucket cylinder, tracks, without fuel 612 kg (1,349 lb), operator 75 kg (165 lb), with hydraulic oil 184 kg (406 lb), diesel exhaust fluid 49 kg (108 lb)		
With Standard Counterweight, Swing Frame and Base Frame	48 030	105,880
With Removal Type Counterweight, Swing Frame and Base Frame	48 090	106,020
Track Shoes:		
650 mm (26") HD Double Grouser Track Shoes	8220	18,110
750 mm (30") HD Double Grouser Track Shoes	8890	19,600
900 mm (35") HD Double Grouser Track Shoes	9900	21,840
Two Boom Cylinders	2790	6,160
Weight of 90% Fuel Tank and 75 kg (165 lb) Operator	860	1,880
Counterweights:		
Standard Counterweight	11 240	24,770
Counterweight with Removal Device	11 300	24,910
Swing Frame:		
Standard Swing Frame	6450	14,210
Long Variable Gauge:		
Base Frame with Double Flange Track Rollers and Carrier Rollers	18 850	41,560
Booms (including lines, pins, stick cylinder):		
Reach Boom 7.8 m (25'7")	6960	15,330
Mass Boom 7.0 m (23'0")	7510	16,560
Sticks (including lines, pins, bucket cylinder, bucket linkage):		
Reach Stick R3.60VB (11'10")	3760	8,280
Mass Stick M3.0WB (9'10")	4400	9,710
Mass Stick M2.57WB (8'5")	4130	9,110
Buckets (without linkage):		
3.30 m ³ (4.32 yd ³) Severe Duty for VB	3940	8,680
4.40 m ³ (5.75 yd ³) Extreme Duty for WB	5950	13,110
Quick Couplers:		
CW Dedicated Quick Coupler for VB	1020	2,260
CW Dedicated Quick Coupler for WB	1080	2,370

VISIT SITE NOW »



Dimensions

All dimensions are approximate and may vary depending on bucket selection



Boom Options	Reach Boom 7.8 m (25'7")		Mass Boom 7.0 m (23'0")		
	Stick Options		Mass Stick		
	R3.60VB (11'10")	M2.57WB (8'5")	M3.0WB (9'10")		
1 Machine Height:					
Cab Height	3559 mm	11'8"	3559 mm	11'8"	3559 mm 11'8"
OPG Height	3702 mm	12'1"	3702 mm	12'1"	3702 mm 12'1"
Handrails Height	3982 mm	13'0"	3982 mm	13'0"	3982 mm 13'0"
With Boom/Stick/Bucket Installed	4519 mm	14'9"	4927 mm	16'1"	4902 mm 16'0"
With Boom/Stick Installed	4287 mm	14'0"	4368 mm	14'3"	4463 mm 14'7"
With Boom Installed	3896 mm	12'9"	3896 mm	12'9"	3896 mm 12'9"
With Boom/Stick/Bucket Installed (with auxiliary lines)	4555 mm	14'11"	4942 mm	16'2"	4918 mm 16'1"
With Boom/Stick Installed (with auxiliary lines)	4319 mm	14'2"	4403 mm	14'5"	4496 mm 14'9"
With Boom Installed (with auxiliary lines)	4033 mm	13'2"	4033 mm	13'2"	4033 mm 13'2"
2 Machine Length:					
With Boom/Stick/Bucket Installed	13 652 mm	44'9"	12 978 mm	42'6"	12 856 mm 42'2"
With Boom/Stick Installed	13 625 mm	44'8"	12 719 mm	41'8"	12 702 mm 41'8"
With Boom Installed	11 855 mm	38'10"	11 011 mm	36'1"	11 011 mm 36'1"
With Boom/Stick/Bucket Installed (with auxiliary lines)	13 652 mm	44'9"	12 978 mm	42'6"	12 856 mm 42'2"
With Boom/Stick Installed (with auxiliary lines)	13 625 mm	44'8"	12 719 mm	41'8"	12 702 mm 41'8"
With Boom Installed (with auxiliary lines)	11 855 mm	38'10"	11 056 mm	36'3"	11 056 mm 36'3"
3 Upperframe Width:					
Without Walkways	3490 mm	11'5"	3490 mm		
		14'9"	4508 mm	14'9"	4508 mm 14'9"
Walkways Width	500 mm	1'7"	500 mm	1'7"	500 mm 1'7"
4 Tail Swing Radius					
	4171 mm	13'8"	4171 mm	13'8"	4171 mm 13'8"
5 Counterweight Clearance (without shoe lug)					
	1494 mm	4'10"	1494 mm	4'10"	1494 mm 4'10"
6 Ground Clearance (without shoe lug)					
	782 mm	2'6"	782 mm	2'6"	782 mm 2'6"

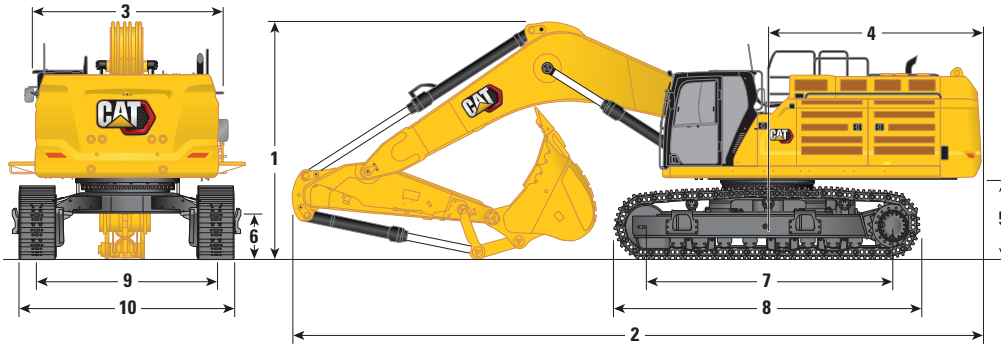
(continued on next page)



VISIT SITE NOW »

Dimensions (continued)

All dimensions are approximate and may vary depending on bucket selection



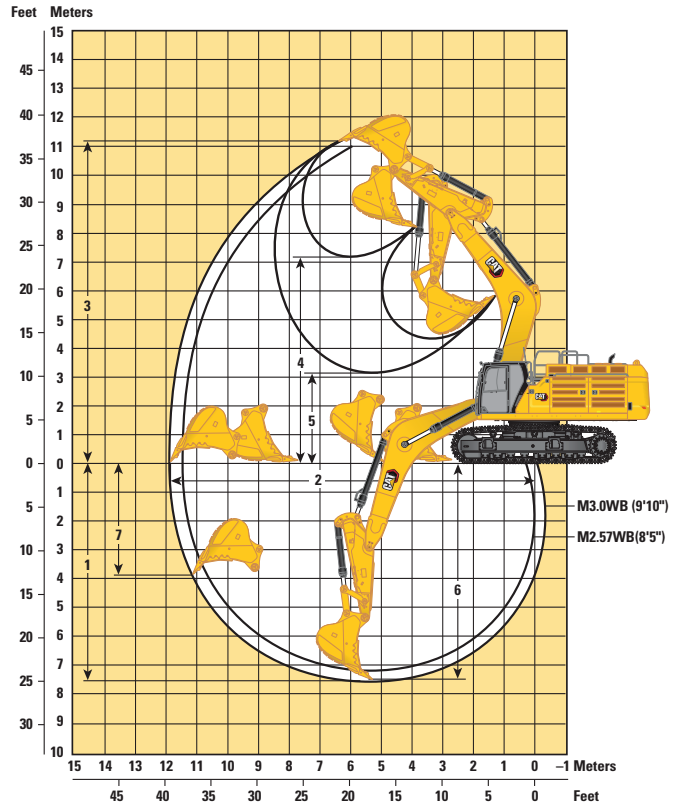
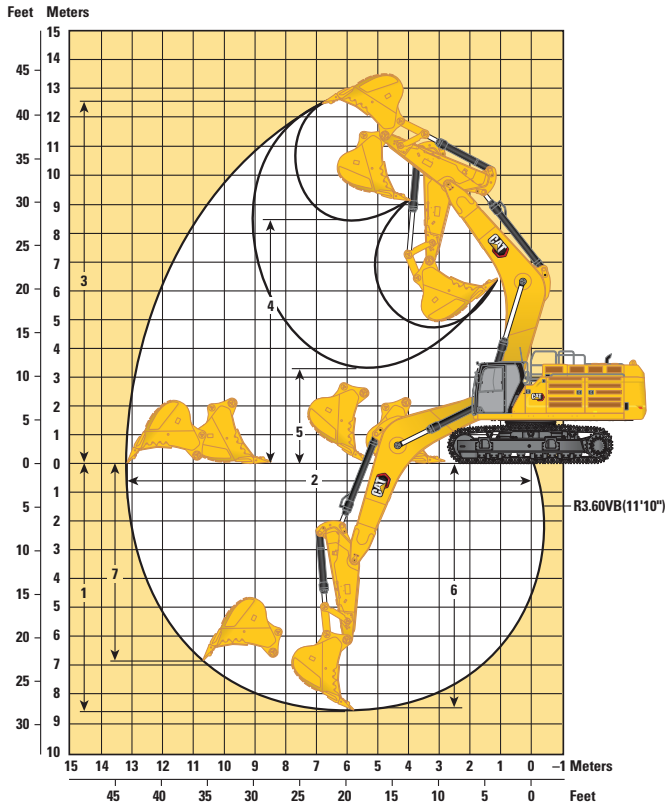
Boom Options	Reach Boom 7.8 m (25'7")		Mass Boom 7.0 m (23'0")			
	Reach Stick		Mass Stick			
Stick Options	R3.60VB (11'10")	M2.57WB (8'5")	M3.0WB (9'10")			
7 Length to Center of Rollers	4705 mm	15'5"	4705 mm	15'5"	4705 mm	15'5"
8 Track Length with Double Grouser Shoes	5873 mm	19'3"	5873 mm	19'3"	5873 mm	19'3"
9 Track Gauge:						
Retracted with Double Grouser Shoes	2750 mm	9'0"	2750 mm	9'0"	2750 mm	9'0"
Extended with Double Grouser Shoes	3410 mm	11'2"	3410 mm	11'2"	3410 mm	11'2"
10 Undercarriage Width – Retracted (without steps):						
650 mm (26") Shoes	3400 mm	11'1"	3400 mm	11'1"	3400 mm	11'1"
750 mm (30") Shoes	3500 mm	11'5"	3500 mm	11'5"	3500 mm	11'5"
900 mm (35") Shoes	3650 mm	11'11"	3650 mm	11'11"	3650 mm	11'11"
Undercarriage Width – Retracted (with steps):						
650 mm (26") Shoes	3678 mm	12'0"	3678 mm	12'0"	3678 mm	12'0"
750 mm (30") Shoes	3678 mm	12'0"	3678 mm	12'0"	3678 mm	12'0"
900 mm (35") Shoes	3678 mm	12'0"	3678 mm	12'0"	3678 mm	12'0"
Undercarriage Width – Extended (without steps):						
650 mm (26") Shoes	4060 mm	13'3"	4060 mm	13'3"	4060 mm	13'3"
750 mm (30") Shoes	4160 mm	13'7"	4160 mm	13'7"	4160 mm	13'7"
900 mm (35") Shoes	4310 mm	14'1"	4310 mm	14'1"	4310 mm	14'1"
Undercarriage Width – Extended (with steps):						
650 mm (26") Shoes	4338 mm	14'2"	4338 mm	14'2"	4338 mm	14'2"
750 mm (30") Shoes	4338 mm	14'2"	4338 mm	14'2"	4338 mm	14'2"
900 mm (35") Shoes	4338 mm	14'2"	4338 mm	14'2"	4338 mm	14'2"
Bucket Type:	SD		XD		XD	
Bucket Capacity	3.30 m ³	4.32 yd ³	4.40 m ³	5.75 yd ³	4.40 m ³	5.75 yd ³
Bucket Tip Radius	2240 mm	7'4"	2310 mm	7'6"	2310 mm	7'6"

VISIT SITE NOW »



Working Ranges and Forces

All dimensions are approximate and may vary depending on bucket selection .



Boom Options

Reach Boom
7.8 m (25'7")

Mass Boom
7.0 m (23'0")

Stick Options

Reach Stick

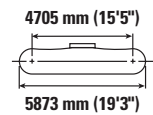
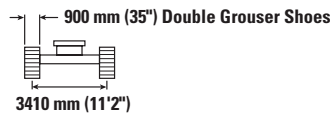
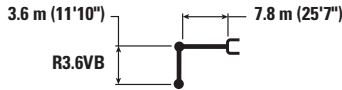
Mass Stick

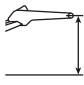

	R3.60VB (11'10")		M2.57WB (8'5")		M3.0WB (9'10")	
	Feet	Meters	Feet	Meters	Feet	Meters
1 Maximum Digging Depth	28'1"	8570 mm	23'9"	7240 mm	25'1"	7660 mm
2 Maximum Reach at Ground Line	43'2"	13 160 mm	37'7"	11 460 mm	38'10"	11 860 mm
3 Maximum Cutting Height	41'2"	12 550 mm	36'1"	11 000 mm	36'7"	11 170 mm
4 Maximum Loading Height	27'7"	8430 mm	23'1"	7050 mm	23'8"	7220 mm
5 Minimum Loading Height	10'10"	3310 mm	11'4"	3470 mm	10'0"	3050 mm
6 Maximum Depth Cut for 2440 mm (8'0") Level Bottom	27'8"	8440 mm	23'2"	7080 mm	24'8"	7520 mm
7 Maximum Vertical Wall Digging Depth	22'8"	6910 mm	11'10"	3620 mm	13'0"	3970 mm
Bucket Digging Force (ISO)	80,550 lbf	358 kN	91,230 lbf	406 kN	91,330 lbf	406 kN
Stick Digging Force (ISO)	66,390 lbf	295 kN	79,130 lbf	352 kN	72,450 lbf	322 kN
Bucket Type	SD		XD		XD	
Bucket Capacity	4.32 yd ³	3.30 m ³	5.75 yd ³	4.40 m ³	5.75 yd ³	4.40 m ³
Bucket Tip Radius	7'4"	2240 mm	7'6"	2310 mm	7'6"	2310 mm



Reach Boom Lift Capacities – Standard Counterweight – without Bucket, Heavy Lift: On**

Long Variable Gauge Undercarriage



	3000 mm/10'0"		4500 mm/15'0"		6000 mm/20'0"		7500 mm/25'0"		9000 mm/30'0"		10 500 mm/35'0"				mm ft/in	
	kg lb	kg lb	kg lb	kg lb	kg lb	kg lb	kg lb	kg lb	kg lb	kg lb	kg lb	kg lb	kg lb			
10 500 mm 35'0"														*16 150 *36,000	*16 150 *36,000	7760 24'10"
9000 mm 30'0"									*15 700 15 250					*15 100 *33,400	15 050 *33,400	9070 29'4"
7500 mm 25'0"							*16 950 *36,900	*16 950 *36,900	*15 750 *34,400	15 200 32,600				*14 650 *32,350	12 650 28,250	9980 32'6"
6000 mm 20'0"					*21 500 *46,400	*21 500 *46,400	*18 300 *39,700	*18 300 *39,700	*16 350 *35,600	14 850 31,900	*15 200 11 450			*14 650 *32,250	11 250 25,000	10 610 34'8"
4500 mm 15'0"					*24 750 *53,350	*24 750 *53,350	*20 050 *43,350	18 900 40,750	*17 250 *37,500	14 350 30,850	15 350 33,000	11 250 24,200		14 250 31,500	10 450 23,050	10 990 35'11"
3000 mm 10'0"					*27 700 *59,750	24 850 53,600	*21 700 *46,950	18 000 38,850	*18 200 *39,500	13 850 29,800	15 050 32,400	11 000 23,600		13 750 30,250	10 000 22,050	11 150 36'6"
1500 mm 5'0"					*29 400 *63,550	23 750 51,200	*22 900 *49,550	17 300 37,300	18 600 40,000	13 400 28,850	14 800 31,850	10 750 23,100		13 650 30,000	9900 21,750	11 110 36'5"
0 mm 0'0"					*29 600 *61,450	23 200 *61,450	*23 300 *61,950	16 850 49,600	18 250 *49,450	13 100 35,850	14 650 39,000	10 550 27,900		13 950 32,700	10 100 23,600	10 860 34'0"
-1500 mm -5'0"					*26 800 *59,550	*26 800 *59,550	*28 550 *70,900	23 050 *70,900	*22 850 *57,000	16 650 49,900	18 100 *45,950	12 950 36,700		14 850 *33,550	10 700 26,300	10 390 31'6"
-3000 mm -10'0"					*26 350 *59,550	*26 350 *59,550	*26 350 *70,900	23 200 *70,900	*21 300 *45,950	16 700 35,950	*17 100 *36,700	13 000 28,050		*15 250 *33,550	11 900 26,300	9660 31'6"
-4500 mm -15'0"					*32 400 *70,200	*32 400 *70,200	*27 450 *59,250	*27 450 *59,250	*22 550 *48,500	17 000 *48,500				*14 650 *32,100	14 200 31,600	8600 27'11"
-6000 mm -20'0"							*16 100 *33,600	*16 100 *33,600						*12 750 *27,600	*12 750 *27,600	7070 22'9"



ISO 10567:2007



*Indicates that the load is limited by hydraulic lifting capacity rather than tipping load. The above loads are in compliance with hydraulic excavator lift capacity standard ISO 10567:2007. They do not exceed 87% of hydraulic lifting capacity or 75% of tipping load. Weight of all lifting accessories must be deducted from the above lifting capacities. Lifting capacities are based on the machine standing on a firm, uniform supporting surface. The use of a work tool attachment point to handle/lift objects, could affect the machine lift performance.

**Lift capacities apply to both standard counterweight and counterweight with removal device.

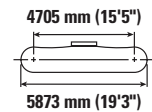
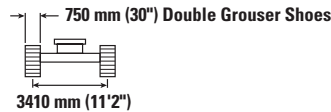
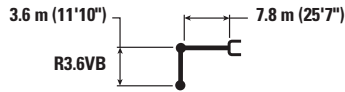
Lift capacity stays with ±5% for all available track shoes.

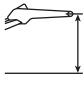

Always refer to the appropriate Operation and Maintenance Manual for specific product information.



Reach Boom Lift Capacities – Standard Counterweight – without Bucket, Heavy Lift: On**

Long Variable Gauge Undercarriage



	3000 mm/10'0"		4500 mm/15'0"		6000 mm/20'0"		7500 mm/25'0"		9000 mm/30'0"		10 500 mm/35'0"				mm ft/in		
	kg lb	kg lb	kg lb	kg lb	kg lb	kg lb	kg lb	kg lb	kg lb	kg lb	kg lb	kg lb	kg lb				
10 500 mm 35'0"														*16 150 *36,000	*16 150 *36,000	7760 24'10"	
9000 mm 30'0"									*15 700	15 050				*15 100 *33,400	14 850 *33,400	9070 29'4"	
7500 mm 25'0"							*16 950 *36,900	*16 950 *36,900	*15 750 *34,400	15 000 32,200				*14 650 *32,350	12 500 27,850	9980 32'6"	
6000 mm 20'0"					*21 500 *46,400	*21 500 *46,400	*18 300 *39,700	*18 300 *39,700	*16 350 *35,600	14 650 31,450	*15 200	11 300		*14 650 *32,250	11 100 24,650	10 610 34'8"	
4500 mm 15'0"					*24 750 *53,350	*24 750 *53,350	*20 050 *43,350	18 650 40,200	*17 250 *37,500	14 150 30,450	15 150 32,550	11 100 23,850		14 050 31,050	10 300 22,750	10 990 35'11"	
3000 mm 10'0"					*27 700 *59,750	24 500 52,900	*21 700 *46,950	17 750 38,300	*18 200 *39,500	13 650 29,350	14 850 31,950	10 800 23,250		13 550 29,850	9850 21,700	11 150 36'6"	
1500 mm 5'0"					*29 400 *63,550	23 450 50,450	*22 900 *49,550	17 050 36,750	18 300 39,450	13 200 28,400	14 600 31,400	10 550 22,750		13 450 29,550	9750 21,450	11 110 36'5"	
0 mm 0'0"					*29 600 *64,150	22 900 49,250	*23 300 *50,500	16 600 35,800	18 000 38,700	12 900 27,750	14 400 31,050	10 400 22,450		13 750 30,300	9950 21,900	10 860 35'7"	
-1500 mm -5'0"					*26 800 *61,450	*26 800 *61,450	*28 550 *61,950	22 750 48,900	*22 850 *49,450	16 400 35,350	17 850 38,400	12 750 27,450		14 600 32,250	10 550 23,250	10 390 34'0"	
-3000 mm -10'0"					*26 350 *59,550	*26 350 *59,550	*32 650 *70,900	*32 650 *70,900	*26 350 *57,000	22 850 49,200	*21 300 *45,950	16 450 35,450	*17 100 *36,700	12 800 27,650	*15 250 *33,550	11 700 25,950	9660 31'6"
-4500 mm -15'0"					*32 400 *70,200	*32 400 *70,200	*27 450 *59,250	*27 450 *59,250	*22 550 *48,500	*22 550 *48,500	*18 100 *38,650	16 750 36,150		*14 650 *32,100	14 000 31,150	8600 27'11"	
-6000 mm -20'0"							*16 100 *33,600	*16 100 *33,600						*12 750 *27,600	*12 750 *27,600	7070 22'9"	



ISO 10567:2007



*Indicates that the load is limited by hydraulic lifting capacity rather than tipping load. The above loads are in compliance with hydraulic excavator lift capacity standard ISO 10567:2007. They do not exceed 87% of hydraulic lifting capacity or 75% of tipping load. Weight of all lifting accessories must be deducted from the above lifting capacities. Lifting capacities are based on the machine standing on a firm, uniform supporting surface. The use of a work tool attachment point to handle/lift objects, could affect the machine lift performance.

**Lift capacities apply to both standard counterweight and counterweight with removal device.

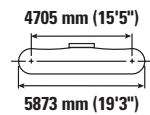
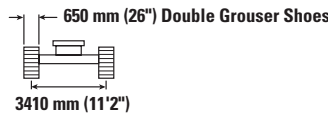
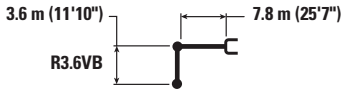
Lift capacity stays with ±5% for all available track shoes.

Always refer to the appropriate Operation and Maintenance Manual for specific product information.



Reach Boom Lift Capacities – Standard Counterweight – without Bucket, Heavy Lift: On**

Long Variable Gauge Undercarriage



Reach mm ft/in	kg lb	3000 mm/10'0"		4500 mm/15'0"		6000 mm/20'0"		7500 mm/25'0"		9000 mm/30'0"		10 500 mm/35'0"		mm ft/in		
		kg lb	kg lb	kg lb	kg lb	kg lb	kg lb	kg lb	kg lb	kg lb	kg lb	kg lb	kg lb	kg lb	mm ft/in	
10 500 mm 35'0"	kg lb													*16 150 *36,000	*16 150 *36,000	7760 24'10"
9000 mm 30'0"	kg lb									*15 700 14 950				*15 100 *33,400	14 750 33,100	9070 29'4"
7500 mm 25'0"	kg lb							*16 950 *36,900	*16 950 *36,900	*15 750 *34,400	14 850 31,900			*14 650 *32,350	12 400 27,600	9980 30'6"
6000 mm 20'0"	kg lb					*21 500 *46,400	*21 500 *46,400	*18 300 *39,700	*18 300 *39,700	*16 350 *35,600	14 500 31,200	*15 200 11 200		*14 650 *32,250	11 000 24,400	10 610 34'8"
4500 mm 15'0"	kg lb					*24 750 *53,350	*24 750 *53,350	*20 050 *43,350	18 500 39,850	*17 250 *37,500	14 000 30,150	15 000 32,200	11 000 23,600	13 950 30,750	10 200 22,500	10 990 35'11"
3000 mm 10'0"	kg lb					*27 700 *59,750	24 300 52,400	*21 700 *46,950	17 600 37,950	*18 200 *39,500	13 500 29,100	14 700 31,650	10 700 23,050	13 400 29,550	9750 21,500	11 150 36'6"
1500 mm 5'0"	kg lb					*29 400 *63,550	23 200 50,000	*22 900 *49,550	16 900 36,400	18 150 39,050	13 050 28,150	14 450 31,100	10 450 22,500	13 300 29,250	9650 21,200	11 110 36'5"
0 mm 0'0"	kg lb			*37,700 *37,700		*29 600 *64,150	22 650 48,750	*23 300 *50,200	16 450 35,400	17 800 38,350	12 750 27,450	14 250 30,750	10 300 22,200	13 600 30,000	9850 21,650	10 860 35'7"
-1500 mm -5'0"	kg lb			*26 800 *61,450	*26 800 *61,450	*28 550 *61,950	22 500 48,400	*22 850 *49,450	16 250 35,000	17 650 38,000	12 600 27,200			14 450 31,900	10 450 23,000	10 390 34'0"
-3000 mm -10'0"	kg lb	*26 350 *59,550	*26 350 *59,550	*32 650 *70,900	*32 650 *70,900	*26 350 *57,000	22 650 48,700	*21 300 *45,950	16 300 35,100	*17 100 *36,700	12 700 27,350			*15 250 *33,550	11 600 25,650	9660 31'6"
-4500 mm -15'0"	kg lb	*32 400 *70,200	*32 400 *70,200	*27 450 *59,250	*27 450 *59,250	*22 550 *48,500	*22 550 *48,500	*18 100 *38,650	16 600 35,800					*14 650 *32,100	13 850 30,850	8600 27'11"
-6000 mm -20'0"	kg lb					*16 100 *33,600	*16 100 *33,600							*12 750 *27,600	*12 750 *27,600	7070 22'9"



ISO 10567:2007



*Indicates that the load is limited by hydraulic lifting capacity rather than tipping load. The above loads are in compliance with hydraulic excavator lift capacity standard ISO 10567:2007. They do not exceed 87% of hydraulic lifting capacity or 75% of tipping load. Weight of all lifting accessories must be deducted from the above lifting capacities. Lifting capacities are based on the machine standing on a firm, uniform supporting surface. The use of a work tool attachment point to handle/lift objects, could affect the machine lift performance.

**Lift capacities apply to both standard counterweight and counterweight with removal device.

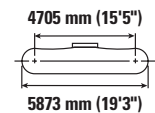
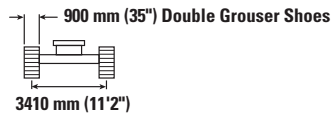
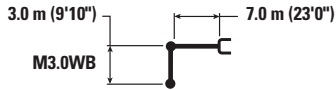
Lift capacity stays with ±5% for all available track shoes.

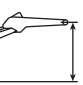








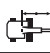

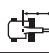


Always refer to the appropriate Operation and Maintenance Manual for specific product information.



Mass Boom Lift Capacities – Standard Counterweight – without Bucket, Heavy Lift: On**

Long Variable Gauge Undercarriage



		3000 mm/10'0"		4500 mm/15'0"		6000 mm/20'0"		7500 mm/25'0"		9000 mm/30'0"				mm ft/in
														
9000 mm 30'0"	kg lb											*15 100 *33,500	*15 100 *33,500	7350 23'7"
7500 mm 25'0"	kg lb							*17 800 *39,000	*17 800 *39,000			*14 300 *31,550	*14 300 *31,550	8450 27'5"
6000 mm 20'0"	kg lb					*21 400 *46,300	*21 400 *46,300	*18 650 *40,600	*18 650 *40,600	*17 200 14 350	14 350	*14 100 *31,050	13 850 30,800	9180 29'11"
4500 mm 15'0"	kg lb			*33 250 *71,100	*33 250 *71,100	*24 350 *52,550	*24 350 *52,550	*20 100 *43,550	18 700 40,300	*17 700 *38,550	14 000 30,100	*14 350 *31,550	12 550 27,700	9620 31'6"
3000 mm 10'0"	kg lb					*27 200 *58,700	24 850 53,600	*21 600 *46,800	17 850 38,450	*18 400 *39,900	13 550 29,200	*15 000 *32,950	11 850 26,150	9810 32'1"
1500 mm 5'0"	kg lb					*28 950 *62,650	23 700 51,050	*22 700 *49,150	17 150 36,950	18 450 39,650	13 200 28,350	*16 150 *35,550	11 700 25,800	9760 32'0"
0 mm 0'0"	kg lb			*31 750 *73,600	*31 750 *73,600	*29 250 *63,350	23 150 49,750	*23 000 *49,800	16 700 36,000	18 150 39,100	12 950 27,850	16 900 37,200	12 050 26,550	9480 31'0"
-1500 mm -5'0"	kg lb	*26 150 *59,100	*26 150 *59,100	*36 050 *78,350	*36 050 *78,350	*28 000 *60,700	23 000 49,450	*22 150 *47,900	16 550 35,700			*17 650 *38,850	13 100 28,900	8930 29'2"
-3000 mm -10'0"	kg lb	*38 850 *84,650	*38 850 *84,650	*31 650 *68,600	*31 650 *68,600	*25 100 *54,200	23 250 50,000	*19 550 *41,850	16 800 36,200			*17 400 *38,250	15 300 33,900	8060 26'3"
-4500 mm -15'0"	kg lb			*24 550 *52,550	*24 550 *52,550	*19 250 *40,750	*19 250 *40,750					*16 100 *35,250	*16 100 *35,250	6750 21'10"



ISO 10567:2007



*Indicates that the load is limited by hydraulic lifting capacity rather than tipping load. The above loads are in compliance with hydraulic excavator lift capacity standard ISO 10567:2007. They do not exceed 87% of hydraulic lifting capacity or 75% of tipping load. Weight of all lifting accessories must be deducted from the above lifting capacities. Lifting capacities are based on the machine standing on a firm, uniform supporting surface. The use of a work tool attachment point to handle/lift objects, could affect the machine lift performance.

**Lift capacities apply to both standard counterweight and counterweight with removal device.

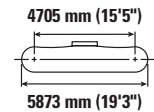
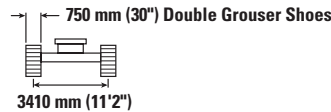
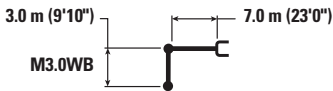
Lift capacity stays with ±5% for all available track shoes.

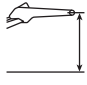
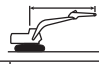
Always refer to the appropriate Operation and Maintenance Manual for specific product information.



Mass Boom Lift Capacities – Standard Counterweight – without Bucket, Heavy Lift: On**

Long Variable Gauge Undercarriage



	3000 mm/10'0"		4500 mm/15'0"		6000 mm/20'0"		7500 mm/25'0"		9000 mm/30'0"						
	kg	lb	kg	lb	kg	lb	kg	lb	kg	lb	kg	lb	mm	ft/in	
9000 mm 30'0"													*15 100	*15 100	7350
													*33,500	*33,500	23'7"
7500 mm 25'0"							*17 800	*17 800					*14 300	*14 300	8450
							*39,000	*39,000					*31,550	*31,550	27'5"
6000 mm 20'0"					*21 400	*21 400	*18 650	*18 650	*17 200	14 150			*14 100	13 650	9180
					*46,300	*46,300	*40,600	*40,600					*31,050	30,350	29'11"
4500 mm 15'0"			*33 250	*33 250	*24 350	*24 350	*20 100	18 450	*17 700	13 800			*14 350	12 350	9620
			*71,100	*71,100	*52,550	*52,550	*43,550	39,750	*38,550	29,700			*31,550	27,300	31'6"
3000 mm 10'0"					*27 200	24 500	*21 600	17 600	*18 400	13 350			*15 000	11 700	9810
					*58,700	52,850	*46,800	37,950	*39,900	28,750			*32,950	25,750	32'1"
1500 mm 5'0"					*28 950	23 350	*22 700	16 900	18 150	13 000			16 100	11 550	9760
					*62,650	50,350	*49,150	36,400	39,050	27,950			35,400	25,400	32'0"
0 mm 0'0"			*31 750	*31 750	*29 250	22 800	*23 000	16 450	17 900	12 750			16 650	11 900	9480
			*73,600	*73,600	*63,350	49,050	*49,800	35,450	38,550	27,450			36,650	26,150	31'0"
-1500 mm -5'0"		*26 150	*26 150	*36 050	*36 050	*28 000	22 650	*22 150	16 300				*17 650	12 900	8930
		*59,100	*59,100	*78,350	78,050	*60,700	48,700	*47,900	35,150				*38,850	28,450	29'2"
-3000 mm -10'0"		*38 850	*38 850	*31 650	*31 650	*25 100	22 900	*19 550	16 550				*17 400	15 050	8060
		*84,650	*84,650	*68,600	*68,600	*54,200	49,250	*41,850	35,700				*38,250	33,400	26'3"
-4500 mm -15'0"				*24 550	*24 550	*19 250	*19 250						*16 100	*16 100	6750
				*52,550	*52,550	*40,750	*40,750						*35,250	*35,250	21'10"



ISO 10567:2007



*Indicates that the load is limited by hydraulic lifting capacity rather than tipping load. The above loads are in compliance with hydraulic excavator lift capacity standard ISO 10567:2007. They do not exceed 87% of hydraulic lifting capacity or 75% of tipping load. Weight of all lifting accessories must be deducted from the above lifting capacities. Lifting capacities are based on the machine standing on a firm, uniform supporting surface. The use of a work tool attachment point to handle/lift objects, could affect the machine lift performance.

**Lift capacities apply to both standard counterweight and counterweight with removal device.

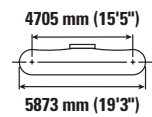
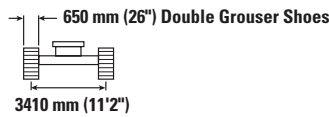
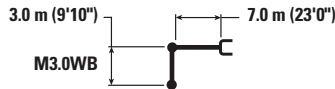
Lift capacity stays with ±5% for all available track shoes.

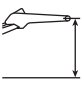
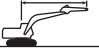

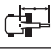

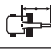

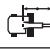

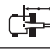

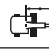

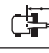
Always refer to the appropriate Operation and Maintenance Manual for specific product information.



Mass Boom Lift Capacities – Standard Counterweight – without Bucket, Heavy Lift: On**

Long Variable Gauge Undercarriage



	3000 mm/10'0"		4500 mm/15'0"		6000 mm/20'0"		7500 mm/25'0"		9000 mm/30'0"				mm ft/in	
														
9000 mm 30'0"	kg lb											*15 100 *33,500	*15 100 *33,500	7350 23'7"
7500 mm 25'0"	kg lb						*17 800 *39,000	*17 800 *39,000				*14 300 *31,550	*14 300 *31,550	8450 27'5"
6000 mm 20'0"	kg lb				*21 400 *46,300	*21 400 *46,300	*18 650 *40,600	*18 650 *40,600	*17 200	14 050		*14 100 *31,050	13 550 30,050	9180 29'11"
4500 mm 15'0"	kg lb		*33 250 *71,100	*33 250 *71,100	*24 350 *52,550	*24 350 *52,550	*20 100 *43,550	18 300 39,400	*17 700 *38,550	13 700 29,400		*14 350 *31,550	12 250 27,050	9620 31'6"
3000 mm 10'0"	kg lb				*27 200 *58,700	24 300 52,400	*21 600 *46,800	17 450 37,550	*18 400 *39,550	13 250 28,500		*15 000 *32,950	11 550 25,500	9810 32'1"
1500 mm 5'0"	kg lb				*28 950 *62,650	23 150 49,850	*22 700 *49,150	16 750 36,050	18 000 *38,700	12 850 27,650		15 900 35,050	11 400 25,150	9760 32'0"
0 mm 0'0"	kg lb		*31 750 *73,600	*31 750 *73,600	*29 250 *63,350	22 550 48,550	*23 000 *49,800	16 300 35,100	17 700 *38,150	12 600 27,150		16 450 36,300	11 750 25,900	9480 31'0"
-1500 mm -5'0"	kg lb	*26 150 *59,100	*26 150 *59,100	*36 050 *78,350	*36 050 *77,300	*28 000 *60,700	22 450 48,250	*22 150 *47,900	16 150 34,800			*17 650 *38,850	12 750 28,150	8930 29'2"
-3000 mm -10'0"	kg lb	*38 850 *84,650	*38 850 *84,650	*31 650 *68,600	*31 650 *68,600	*25 100 *54,200	22 650 48,800	*19 550 *41,850	16 350 35,350			*17 400 *38,250	14 900 33,050	8060 26'3"
-4500 mm -15'0"	kg lb			*24 550 *52,550	*24 550 *52,550	*19 250 *40,750	*19 250 *40,750					*16 100 *35,250	*16 100 *35,250	6750 21'10"



ISO 10567:2007



*Indicates that the load is limited by hydraulic lifting capacity rather than tipping load. The above loads are in compliance with hydraulic excavator lift capacity standard ISO 10567:2007. They do not exceed 87% of hydraulic lifting capacity or 75% of tipping load. Weight of all lifting accessories must be deducted from the above lifting capacities. Lifting capacities are based on the machine standing on a firm, uniform supporting surface. The use of a work tool attachment point to handle/lift objects, could affect the machine lift performance.

**Lift capacities apply to both standard counterweight and counterweight with removal device.

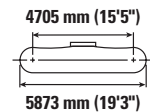
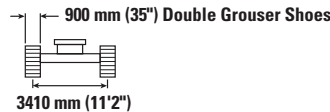
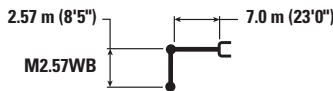
Lift capacity stays with ±5% for all available track shoes.

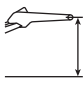

Always refer to the appropriate Operation and Maintenance Manual for specific product information.



Mass Boom Lift Capacities – Standard Counterweight – without Bucket, Heavy Lift: On**

Long Variable Gauge Undercarriage



	3000 mm/10'0"		4500 mm/15'0"		6000 mm/20'0"		7500 mm/25'0"		9000 mm/30'0"				mm ft/in	
	kg lb	kg lb	kg lb	kg lb	kg lb	kg lb	kg lb	kg lb	kg lb	kg lb	kg lb	kg lb		
9000 mm 30'0"												*18 150 *40,350	*18 150 *40,350	6820 21'10"
7500 mm 25'0"							*18 850 *41,450	*18 850 *41,450				*17 100 *37,750	*17 100 *37,750	8000 25'11"
6000 mm 20'0"					*22 600 *48,900	*22 600 *48,900	*19 550 *42,600	19 400 41,750				*16 850 *37,100	14 950 33,200	8770 28'7"
4500 mm 15'0"					*25 450 *54,950	*25 450 *54,950	*20 900 *45,300	18 650 40,150	*18 400 *40,100	14 000 30,100		*17 150 *37,750	13 450 29,700	9230 30'2"
3000 mm 10'0"					*28 100 *60,650	24 700 53,250	*22 250 *48,150	17 850 38,450	18 900 40,650	13 600 29,300		17 600 38,800	12 700 28,000	9430 30'10"
1500 mm 5'0"					*29 450 *63,750	23 700 51,050	*23 100 *50,100	17 200 37,100	18 550 39,900	13 300 28,650		17 450 38,450	12 550 27,650	9380 30'9"
0 mm 0'0"					*29 500 *69,100	*29 500 *69,100	*29 300 *63,500	23 250 50,050	*23 150 *50,100	16 850 36,300	18 350 40,000	18 150 40,000	13 000 28,600	9080 29'9"
-1500 mm -5'0"		*60,300	*60,300		*34 600 *75,450	*34 600 *75,450	*27 600 *59,850	23 250 50,000	*21 900 *47,300	16 800 36,200		*18 450 *40,650	14 250 31,400	8500 27'10"
-3000 mm -10'0"		*34 200 *74,750	*34 200 *74,750		*29 800 *64,700	*29 800 *64,700	*24 100 *51,950	23 600 50,800	*18 350	17 200		*17 950 *39,500	16 950 37,600	7590 24'9"
-4500 mm -15'0"					*21 750 *46,400	*21 750 *46,400	*16 700					*15 900 *34,600	*15 900 *34,600	6170 19'11"



ISO 10567:2007



*Indicates that the load is limited by hydraulic lifting capacity rather than tipping load. The above loads are in compliance with hydraulic excavator lift capacity standard ISO 10567:2007. They do not exceed 87% of hydraulic lifting capacity or 75% of tipping load. Weight of all lifting accessories must be deducted from the above lifting capacities. Lifting capacities are based on the machine standing on a firm, uniform supporting surface. The use of a work tool attachment point to handle/lift objects, could affect the machine lift performance.

**Lift capacities apply to both standard counterweight and counterweight with removal device.

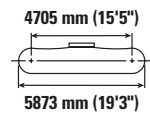
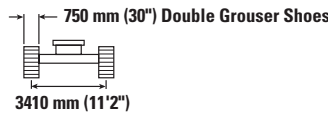
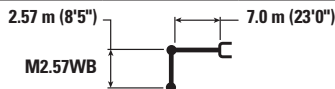
Lift capacity stays with ±5% for all available track shoes.

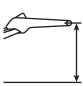




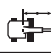

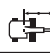






Always refer to the appropriate Operation and Maintenance Manual for specific product information.



Mass Boom Lift Capacities – Standard Counterweight – without Bucket, Heavy Lift: On**

Long Variable Gauge Undercarriage



	3000 mm/10'0"		4500 mm/15'0"		6000 mm/20'0"		7500 mm/25'0"		9000 mm/30'0"				mm ft/in	
														
9000 mm 30'0"	kg lb											*18 150 *40,350	*18 150 *40,350	6820 21'10"
7500 mm 25'0"	kg lb						*18 850 *41,450	*18 850 *41,450				*17 100 *37,750	*17 100 *37,750	8000 25'11"
6000 mm 20'0"	kg lb				*22 600 *48,900	*22 600 *48,900	*19 550 *42,600	19 150 41,250				*16 850 *37,100	14 750 32,750	8770 28'7"
4500 mm 15'0"	kg lb				*25 450 *54,950	*25 450 *54,950	*20 900 *45,300	18 400 39,600	*18 400 *40,100	13 800 29,650		*17 150 *37,750	13 250 29,300	9230 30'2"
3000 mm 10'0"	kg lb				*28 100 *60,650	24 350 52,500	*22 250 *48,150	17 600 37,900	18 600 40,050	13 450 28,900		17 350 38,250	12 500 27,600	9430 30'10"
1500 mm 5'0"	kg lb				*29 450 *63,750	23 350 50,350	*23 100 *50,100	16 950 36,550	18 250 39,300	13 100 28,200		17 200 37,900	12 350 27,200	9380 30'9"
0 mm 0'0"	kg lb			*29 500 *69,100	*29 500 *69,100	*29 300 *63,500	22 950 49,350	*23 150 *50,100	16 600 35,800	18 100 12 950		17 900 39,400	12 800 28,200	9080 29'9"
-1500 mm -5'0"	kg lb	*60,300 *60,300	*60,300 *60,300	*34 600 *75,450	*34 600 *75,450	*27 600 *59,850	22 900 49,300	*21 900 *47,300	16 550 35,700			*18 450 *40,650	14 050 30,950	8500 27'10"
-3000 mm -10'0"	kg lb	*34 200 *74,750	*34 200 *74,750	*29 800 *64,700	*29 800 *64,700	*24 100 *51,950	23 250 50,050	*18 350	16 950			*17 950 *39,500	16 700 37,050	7590 24'9"
-4500 mm -15'0"	kg lb			*21 750 *46,400	*21 750 *46,400	*16 700	*16 700					*15 900 *34,600	*15 900 *34,600	6170 19'11"



ISO 10567:2007



*Indicates that the load is limited by hydraulic lifting capacity rather than tipping load. The above loads are in compliance with hydraulic excavator lift capacity standard ISO 10567:2007. They do not exceed 87% of hydraulic lifting capacity or 75% of tipping load. Weight of all lifting accessories must be deducted from the above lifting capacities. Lifting capacities are based on the machine standing on a firm, uniform supporting surface. The use of a work tool attachment point to handle/lift objects, could affect the machine lift performance.

**Lift capacities apply to both standard counterweight and counterweight with removal device.

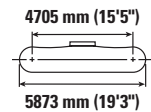
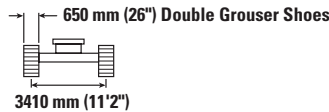
Lift capacity stays with ±5% for all available track shoes.

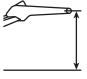

Always refer to the appropriate Operation and Maintenance Manual for specific product information.



Mass Boom Lift Capacities – Standard Counterweight – without Bucket, Heavy Lift: On**

Long Variable Gauge Undercarriage



	3000 mm/10'0"		4500 mm/15'0"		6000 mm/20'0"		7500 mm/25'0"		9000 mm/30'0"				mm ft/in	
	kg lb	kg lb	kg lb	kg lb	kg lb	kg lb	kg lb	kg lb	kg lb	kg lb	kg lb	kg lb		
9000 mm 30'0"												*18 150 *40,350	*18 150 *40,350	6820 21'10"
7500 mm 25'0"							*18 850 *41,450	*18 850 *41,450				*17 100 *37,750	*17 100 *37,750	8000 25'11"
6000 mm 20'0"					*22 600 *48,900	*22 600 *48,900	*19 550 *42,600	19 000 40,850				*16 850 *37,100	14 600 32,450	8770 28'7"
4500 mm 15'0"					*25 450 *54,950	*25 450 *54,950	*20 900 *45,300	18 200 39,250	*18 400 *40,100	13 700 29,400		*17 150 *37,750	13 150 29,000	9230 30'2"
3000 mm 10'0"					*28 100 *60,650	24 150 52,050	*22 250 *48,150	17 450 37,550	18 450 39,650	13 300 28,600		17 150 37,850	12 400 27,300	9430 30'10"
1500 mm 5'0"					*29 450 *63,750	23 150 49,850	*23 100 *50,100	16 800 36,200	18 100 38,950	12 950 27,950		17 050 37,500	12 250 26,950	9380 30'9"
0 mm 0'0"			*29 500 *69,100	*29 500 *69,100	*29 300 *63,500	22 700 48,850	*23 150 *50,100	16 450 35,450	17 900	12 800		17 700 39,000	12 650 27,900	9080 29'9"
-1500 mm -5'0"		*60,300	*60,300	*34 600 *75,450	*34 600 *75,450	*27 600 *59,850	22 700 48,800	*21 900 *47,300	16 400 35,350			*18 450 *40,650	13 900 30,650	8500 27'10"
-3000 mm -10'0"		*34 200 *74,750	*34 200 *74,750	*29 800 *64,700	*29 800 *64,700	*24 100 *51,950	23 050 49,600	*18 350	16 750			*17 950 *39,500	16 550 36,700	7590 24'9"
-4500 mm -15'0"				*21 750 *46,400	*21 750 *46,400	*16 700	*16 700					*15 900 *34,600	*15 900 *34,600	6170 19'11"



ISO 10567:2007



*Indicates that the load is limited by hydraulic lifting capacity rather than tipping load. The above loads are in compliance with hydraulic excavator lift capacity standard ISO 10567:2007. They do not exceed 87% of hydraulic lifting capacity or 75% of tipping load. Weight of all lifting accessories must be deducted from the above lifting capacities. Lifting capacities are based on the machine standing on a firm, uniform supporting surface. The use of a work tool attachment point to handle/lift objects, could affect the machine lift performance.

**Lift capacities apply to both standard counterweight and counterweight with removal device.

Lift capacity stays with ±5% for all available track shoes.

Always refer to the appropriate Operation and Maintenance Manual for specific product information.



Bucket Specifications and Compatibility

	Width		Capacity		Weight		Fill	Long Variable Gauge Undercarriage							
								11.24 mt (24,770 lb) Counterweight			11.3 mt (24,910 lb) Counterweight with Removal Device				
								Reach Boom 7.8 m (25'7")		Mass Boom 7.0 m (23'0")		Reach Boom 7.8 m (25'7")		Mass Boom 7.0 m (23'0")	
								R3.6 m (11'10")	M2.57 m (8'5")	M3.0 m (9'10")	R3.6 m (11'10")	M2.57 m (8'5")	M3.0 m (9'10")		
mm	in	m ³	yd ³	kg	lb	%									
No Coupler															
General Duty	2000	79	3.80	4.97	3649	8,045	100	⊖				⊖			
Heavy Duty	2000	79	3.80	4.97	3810	8,400	100	⊖				⊖			
General Duty	2150	85	5.00	6.54	4164	9,180	100		⊙	⊖			⊙	⊙	
Heavy Duty	2150	85	5.00	6.54	4340	9,569	100		⊙	⊖			⊙	⊖	
Severe Duty Spade	1950	77	4.10	5.36	4821	10,629	90		●	●			●	●	
	2050	81	4.40	5.75	4977	10,973	90		●	⊙			●	⊙	
	2150	85	4.60	6.02	5134	11,319	90		●	⊙			●	⊙	
	2250	89	5.00	6.54	5291	11,665	90		⊙	⊖			⊙	⊖	
Extreme Duty Spade	2050	81	4.40	5.75	5768	12,717	90		●	⊙			●	⊙	
	2150	85	4.60	6.02	5955	13,129	90		⊙	⊖			⊙	⊖	
	2250	89	5.00	6.54	6139	13,535	90			⊖			⊙	⊖	
Maximum load with pin-on (payload + bucket)							kg	10 034	13 797	12 678	10 071	13 845	12 723		
							lb	22,123	30,413	27,955	22,201	30,523	28,043		
With Cat Pin Grabber Coupler															
General Duty	2000	79	3.80	4.97	3649	8,045	100	○				○			
Heavy Duty	2000	79	3.80	4.97	3810	8,400	100	○				○			
Maximum load with coupler (payload + bucket)							kg	8640			8677				
							lb	19,048			19,130				
With CW-70															
Severe Duty Spade	1950	77	4.00	5.23	4795	10,572	90		●	⊙			●	⊙	
	2050	81	4.40	5.75	4950	10,913	90		⊙	⊖			⊙	⊖	
Extreme Duty Spade	2050	81	4.40	5.75	5551	12,238	90		⊙	⊖			⊙	⊖	
Maximum load with coupler (payload + bucket)							kg		12 517	11 398		12 565	11 443		
							lb		27,595	25,128		27,701	25,228		

*Matches apply to both standard counterweight and counterweight with removal device.

The above loads are in compliance with hydraulic excavator standard EN474-5:2006 + A3:2013, they do not exceed 87% of hydraulic lifting capacity or 75% of tipping capacity with front linkage fully extended at ground line with bucket curled.

Capacity based on ISO 7451:2007.

Bucket weight with General Duty tips.

Maximum Material Density:

- 2100 kg/m³ (3,500 lb/yd³)
- ⊙ 1800 kg/m³ (3,000 lb/yd³)
- ⊖ 1500 kg/m³ (2,500 lb/yd³)
- 1200 kg/m³ (2,000 lb/yd³)

Caterpillar recommends using appropriate work tools to maximize the value customers receive from our products. Use of work tools, including buckets, which are outside of Caterpillar's recommendations or specifications for weight, dimensions, flows, pressures, etc. may result in less-than-optimal performance, including but not limited to reductions in production, stability, reliability, and component durability. Improper use of a work tool resulting in sweeping, prying, twisting and/or catching of heavy loads will reduce the life of the boom and stick.



[VISIT SITE NOW >>](#)

Typical Pass Match Guide

For maximum production and efficiency, we recommend that loading and hauling machines are matched to achieve optimal performance.

Configuration*:

Long Variable Gauge undercarriage, Mass boom, M2.57WB (8'5") stick, XD 4.4 m³ (5.75 yd³) bucket, 650 mm (26") HD double grouser shoes and standard counterweight.

Passes Required to Fill Trucks to Rated Capacity

Material Type	Material Density	Cat Articulated Trucks							Cat Off-Highway Trucks			
		725	730 EJ	730	735	740 GC	740 EJ	745	770G	772G	773E	773G
Earth	1600 kg/m ³ (2,700 lb/yd ³)		4	4	4-5	5	5-6	6	5-6	6-7	8	8
Limestone	1540 kg/m ³ (2,600 lb/yd ³)	4	4-5	4-5	5	6	6	7	6	8		

* The indicated pass match reflects the machine configuration, fill factor, and typical material density shown. Changes to machine configurations, fill factors, or material density as well as jobsite-specific factors may influence exact pass match recommendations for your application. Consult your Cat dealer for more information.

[VISIT SITE NOW >>](#)



VISIT SITE NOW »

ATTACHMENTS OFFERING GUIDE

Not all attachments are available in all regions. Consult your Cat dealer for configurations available in your region.

Match
 Working range front only
 No Match
 1800 kg/m³ (3,000 lb/yd³)
 1200 kg/m³ (2,000 lb/yd³)

PIN-ON ATTACHMENTS

Undercarriage		Long Variable Gauge 11.3 mt (24,910 lb) with Removal device			Long Variable Gauge 11.24 mt (24,770 lb)		
Counterweight							
Boom Type		Reach HD	Mass	Mass	Reach HD	Mass	Mass
Stick Length		3.6 m HD (11'10")	2.57 m (8'5")	3.0 m (9'10")	3.6 m HD (11'10")	2.57 m (8'5")	3.0 m (9'10")
Hydraulic Hammers	H180 S	✓	✓	✓	✓	✓	✓
	H190 S	✓	✓	✓	✓	✓	✓
	H215 S	✓	✓	✓	✓	✓	✓
Multi-Processors	MP365 Concrete Cutter Jaw	✓	✓	✓	✓	✓	✓
	MP365 Concrete Cutter Jaw-Flat Top	✓					
	MP365 Demolition Jaw	✓	✓	✓	✓	✓	✓
	MP365 Demolition Jaw-Flat Top	✓					
	MP365 Pulverizer Jaw	✓	✓	✓	✓	✓	✓
	MP365 Pulverizer Jaw-Flat Top	✓					
	MP365 Shear Jaw	✓	✓	✓	✓	✓	✓
Mobile Scrap and Demolition Shears	MP365 Shear Jaw-Flat Top	✓					
	S3070 Flat Top	✓	✓	✓	✓	✓	✓
Pulverizers	P245 Secondary Pulverizer	✓			✓		
	P365 Primary Pulverizer	✓	✓	✓	✓	✓	✓
	P365 Primary Pulverizer-Flat Top	✓			✓		
Orange Peel Grapples	GSM-60-3750		○	○		○	○
Clamshell Grapples	CTV40-3500	○	●	●	○	●	●
	CTV40-4000	○	●	○	○	●	○
	CTV40-4500		○	○		○	○
	CTV40-5000		○	○		○	○

CAT PIN GRABBER COUPLER ATTACHMENTS

Undercarriage		Long Variable Gauge 11.3 mt (24,910 lb) with Removal device			Long Variable Gauge 11.24 mt (24,770 lb)		
Counterweight							
Boom Type		Reach HD			Reach HD		
Stick Length		3.6 m HD (11'10")			3.6 m HD (11'10")		
Hydraulic Hammers	H180 S		✓			✓	
	H190 S		✓			✓	
	H215 S		✓*			✓*	
Multi-Processors	MP365 Concrete Cutter Jaw		✓			✓	
	MP365 Concrete Cutter Jaw-Flat Top		✓				
	MP365 Demolition Jaw		✓			✓	
	MP365 Demolition Jaw-Flat Top		✓*				
	MP365 Pulverizer Jaw		✓			✓	
	MP365 Pulverizer Jaw-Flat top		✓*				
	MP365 Shear Jaw		✓			✓	
Pulverizers	MP365 Shear Jaw-Flat Top		✓*				
	P245 Secondary Pulverizer		✓			✓	
	P365 Primary Pulverizer		✓			✓	

(continued on next page)

VISIT SITE NOW »



VISIT SITE NOW »

ATTACHMENTS OFFERING GUIDE (continued)

Not all attachments are available in all regions. Consult your Cat dealer for configurations available in your region.

Match
 * Working range front only
 No Match

CW-70 DEDICATED COUPLER ATTACHMENTS

Undercarriage		Long Variable Gauge			Long Variable Gauge		
		11.3 mt (24,910 lb) with Removal device			11.24 mt (24,770 lb)		
Counterweight							
Boom Type		Reach HD	Mass	Mass	Reach HD	Mass	Mass
Stick Length		3.6 m HD (11'10")	2.57 m (8'5")	3.0 m (9'10")	3.6 m HD (11'10")	2.57 m (8'5")	3.0 m (9'10")
Hydraulic Hammers	H180 S	✓	✓	✓	✓	✓	✓
	H190 S	✓	✓	✓	✓	✓	✓
	H215 S	✓*	✓	✓	✓*	✓	✓
Multi-Processors	MP365 Concrete Cutter Jaw	✓	✓	✓	✓	✓	✓
	MP365 Concrete Cutter Jaw-Flat Top	✓	✓	✓			
	MP365 Demolition Jaw	✓	✓	✓	✓	✓	✓
	MP365 Demolition Jaw-Flat Top	✓*	✓	✓			
	MP365 Pulverizer Jaw	✓	✓	✓	✓	✓	✓
	MP365 Pulverizer Jaw-Flat Top	✓*	✓	✓			
	MP365 Shear Jaw	✓	✓	✓	✓	✓	✓
	MP365 Shear Jaw-Flat Top	✓	✓	✓			
Mobile Scrap and Demolition Shears	S3070 Flat Top		✓	✓		✓	✓
Pulverizers	P365 Primary Pulverizer	✓	✓	✓	✓	✓	✓
	P365 Primary Pulverizer-Flat Top	✓*	✓	✓	✓*	✓	✓

BOOM-MOUNT ATTACHMENTS

Undercarriage		Long Variable Gauge		Long Variable Gauge	
		11.3 mt (24,910 lb) with Removal device		11.24 mt (24,770 lb)	
Counterweight					
Boom Type		Reach HD	Mass	Reach HD	Mass
Mobile Scrap and Demolition Shears	S2090	✓	✓	✓	✓

VISIT SITE NOW »



VISIT SITE NOW »

Standard and Optional Equipment

Standard and optional equipment may vary. Consult your Cat dealer for details

	Standard	Optional		Standard	Optional
BOOMS, STICKS AND LINKAGES			ELECTRICAL SYSTEM		
7.0 m (23'0") Mass boom		✓	Maintenance-free 1,400 CCA Batteries (x2)	✓	
7.8 m (25'7") Reach boom		✓	Centralized electrical disconnect switch	✓	
2.57 m (8'5") Mass stick		✓	Chassis light	✓	
3.00 m (9'10") Mass stick		✓	LED boom and cab lights		✓
3.60 m (11'10") Reach stick		✓	Exterior lights (integrated into storage box)	✓	
Bucket Linkage, VB family with lifting eye, Cat Grade		✓	ENGINE		
Bucket Linkage, VB family without lifting eye, Cat Grade		✓	Cold start block heater		✓
Bucket Linkage, WB family with lifting eye, Cat Grade		✓	Three selectable modes: Power, Smart, Eco	✓	
Bucket Linkage, WB family without lifting eye, Cat Grade		✓	Automatic engine speed control	✓	
CAT TECHNOLOGY			Up to 4500 m (14,764 ft) altitude capability	✓	
VisionLink®	✓*		52° C (126° F) high-ambient cooling capacity	✓	
VisionLink Productivity		✓	-18° C (0° F) cold start capability	✓	
Remote Flash	✓		-32° C (-25° F) cold start capability		✓
Remote Troubleshoot	✓		Hydraulic reverse fan	✓	
Operator Coaching	✓		Double element filter with integrated pre-cleaner air filter	✓	
Cat Grade Connectivity		✓	Three vertical side-by-side cooling system	✓	
Compatibility with radios and base stations from Trimble, Topcon, and Leica	✓		95 Amp alternator	✓	
Capability to install 3D grade systems from Trimble, Topcon, and Leica	✓		<i>(continued on next page)</i>		
Cat Grade 2D	✓				
Cat Grade 2D with Attachment Ready Option (ARO)		✓			
Cat Grade 3D single GNSS		✓			
Cat Grade 3D dual GNSS		✓			
Laser catcher		✓			
Cat Assist:	✓				
– Grade Assist					
– Boom Assist					
– Bucket Assist					
– Swing Assist					
– Lift Assist					
Cat Payload:	✓				
– Static weigh					
– Semiautomatic calibration					
– Payload/cycle information					
– USB reporting capability					
Work tool recognition (PL161)	✓				
Work tool tracking (PL161)	✓				
Cat Tilt Rotator (TRS) Integration		✓			

*Connect subscription only. Additional subscriptions are available. Contact your Cat dealer for availability.

VISIT SITE NOW »



Standard and Optional Equipment (continued)

Standard and optional equipment may vary. Consult your Cat dealer for details.

	Standard	Optional		Standard	Optional
HYDRAULIC SYSTEM			SERVICE AND MAINTENANCE		
SmartBoom™		✓	Integrated vehicle health management system	✓	
Boom and stick regeneration circuit	✓		Auto lube ready	✓	
Electronic main control valve	✓		Grouped location for engine oil and fuel filters	✓	
Dedicated closed loop swing circuit	✓		Scheduled Oil Sampling (S-O-S™) ports	✓	
Auto heavy lift	✓		QuickEvac™ maintenance ready	✓	
Automatic hydraulic oil warmup	✓		Electric refueling pump with auto shutoff		✓
Automatic swing parking brake	✓		UNDERCARRIAGE AND STRUCTURES		
High performance hydraulic return filter	✓		Long variable gauge undercarriage	✓	
Two speed travel	✓		Towing eye on base frame	✓	
Bio hydraulic oil and filter	✓		Three-piece segmented track guiding guards		✓
Advanced tool control		✓	Two-piece full-length track guiding guards		✓
Medium-pressure auxiliary circuit		✓	Swivel guard	✓	
Quick coupler circuit		✓	Grease lubricated track	✓	
Hydraulic efficiency monitoring		✓	Standard counterweight	✓	
SAFETY AND SECURITY			Counterweight with removal device		✓
Cat Command (remote control)		✓	650 mm (26") HD double grouser track shoes		✓
Caterpillar One Key security system	✓		750 mm (30") HD double grouser track shoes		✓
2D E-Fence:	✓		900 mm (35") HD double grouser track shoes		✓
– E-ceiling			HD bottom guard	✓	
– E-floor			HD travel motor guard	✓	
– E-swing					
– E-wall					
– E-cab avoidance					
Auto hammer stop	✓				
Lockable external tool/storage box	✓				
Lockable door, fuel, and hydraulic tank locks	✓				
Lockable fuel drain compartment	✓				
Service platforms with anti-skid plate	✓				
Lockable disconnect switch	✓				
Right-hand handrail and handhold	✓				
Standard visibility mirror package	✓				
Signaling/warning horn	✓				
Travel alarm		✓			
Swing alarm		✓			
Ground-level secondary engine shutoff switch	✓				
Rear and right-hand-sideview cameras	✓				
360° visibility		✓			
Boom lowering check valve		✓			
Stick lowering check valve		✓			
Walkway	✓				
Tilt-up walkway		✓			
Inspection lighting		✓			



[VISIT SITE NOW >>](#)

Dealer Installed Kits and Attachments

Attachments may vary. Consult your Cat dealer for details.

CAB

- Radial lower wiper
- Joystick with horizontal sliders
- Left Hand (LH)/Right Hand (RH) electrical pedal for tool control
- Dual exit rear window kit
- Front windshield laminated glass (P5A glass, EU demolition regulation)

ELECTRICAL

- LED premium lights, 1,200 lumens on chassis, 850 lumens on boom and cab

ELECTRICAL

- 1,800 lumen LED premium surround lights

SAFETY AND SECURITY

- Bluetooth[®] key fob
- 76 mm (3") retractable seat belt
- Cat Command – Remote control kit

GUARDS

- OPG (not compatible with cab light cover, rain protector)
- Mesh guard full front (not compatible with cab light cover, rain protector)
- Mesh guard lower half front
- Full protecting vandalism guard
- Rain protector for front windshield plus cab light cover

OTHER ATTACHMENTS

- GNSS antennae

[VISIT SITE NOW >>](#)



[VISIT SITE NOW >>](#)

Cab Options

	Deluxe	Premium
Sound suppressed cab with viscount mounts	●	●
High-resolution 254 mm (10") LCD touch screen monitor	●	●
Additional high-resolution LCD touch screen monitor for Cat Grade 2D and 3D	○	○
Automatic bi-level air conditioner	●	●
Jog dial and shortcut keys for monitor control	●	●
Keyless push-to-start engine control	●	●
Height-adjustable console, infinite with no tool	●	●
Tilt-up left-side console	●	●
Cat Stick Steer	○	○
Auxiliary relay	○	○
Heated seat with air-adjustable suspension	●	X
Heated and cooled seat with automatic adjustable suspension	X	●
51 mm (2") orange seat belt	●	●
Bluetooth integrated radio (including USB, aux port and microphone)	●	●
2 × 12V DC outlets	●	●
Document storage	●	●
Rear head storage net and lunchbox storage net	●	●
Cup and bottle holders	●	●
Fixed one-piece windshield	X	○
Openable two-piece front window	●	○
Upper radial wiper with washer	●	X
Parallel wiper with washer	X	●
Openable polycarbonate skylight hatch	●	○
Fixed glass laminated skylight	X	○
LED dome light	●	●
Floor welcome light	●	●
Roller front sunscreen	●	●
Roller rear sunscreen	○	●
Rear window emergency exit	●	●
Washable floor mat	●	●
Beacon ready	●	●

- Standard
- Optional
- X Not available

[VISIT SITE NOW >>](#)



374 ENVIRONMENTAL DECLARATION

The following information applies to the machine at the time of final manufacture as configured for sale in the regions covered in this document. The content of this declaration is valid as of the date issued; however, content related to machine features and specifications are subject to change without notice. For additional information, please see the machine's Operation and Maintenance Manual.

For more information on sustainability in action and our progress, please visit <https://www.caterpillar.com/en/company/sustainability>.

Engine

- The Cat® C15 engine meets U.S. EPA Tier 4 Final, EU Stage V, Korea Stage V, and Japan 2014 emission standards.
- Cat diesel engines are required to use ULSD (ultra-low sulfur diesel fuel with 15 ppm of sulfur or less) or ULSD blended with the following lower-carbon intensity fuels** up to:
 - ✓ 20% biodiesel FAME (fatty acid methyl ester)*
 - ✓ 100% renewable diesel, HVO (hydrotreated vegetable oil) and GTL (gas-to-liquid) fuels

Refer to guidelines for successful application. Please consult your Cat dealer or "Caterpillar Machine Fluids Recommendations" (SEBU6250) for details.

**Engines with no aftertreatment devices can use higher blends, up to 100% biodiesel (for use of blends higher than 20% biodiesel, consult your Cat dealer).*

***Tailpipe greenhouse gas emissions from lower-carbon intensity fuels are essentially the same as traditional fuels.*

Air Conditioning System

- The air conditioning system on this machine contains the fluorinated greenhouse gas refrigerant R134a (Global Warming Potential = 1430). The system contains 1.0 kg (2.2 lb) of refrigerant which has a CO₂ equivalent of 1.430 metric tonnes (1,576 tons).

Paint

- Based on best available knowledge, the maximum allowable concentration, measured in parts per million (PPM), of the following heavy metals in paint are:
 - Barium < 0.01%
 - Cadmium < 0.01%
 - Chromium < 0.01%
 - Lead < 0.01%

Sound Performance

ISO 6395:2008 (external) – 108 dB(A)

ISO 6396:2008 (inside cab) – 73 dB(A)

- Hearing protection may be needed when operating with an open operator station and cab (when not properly maintained or doors/windows open) for extended periods or in a noisy environment.

Oils and Fluids

- Caterpillar factory fills with ethylene glycol coolants. Cat Diesel Engine Antifreeze/Coolant (DEAC) and Cat Extended Life Coolant (ELC) can be recycled. Consult your Cat dealer for more information.
- Cat Bio HYDO™ Advanced is an EU Ecolabel approved biodegradable hydraulic oil.
- Additional fluids are likely to be present, please consult the Operations and Maintenance Manual or the Application and Installation guide for complete fluid recommendations and maintenance intervals.

Features and Technology

- The following features and technology may contribute to fuel savings and/or carbon reduction. Features may vary. Consult your Cat dealer for details.
 - Smart mode matches machine power to digging requirements automatically
 - Eco mode minimizes fuel consumption for light applications
 - Standard Cat technologies boost productivity and improve operator efficiency by up to 45%
 - Hydraulic oil filter provides longer life with a 3,000-hour replacement interval – 50% longer than previous filter designs
 - Cut costs with extended maintenance intervals