



HAWK

Reach Beyond, with HAWK.

VISIT SITE NOW »



JOHN DEERE

870 P
Excavator

VISIT SITE NOW »

www.hawkexcavator.com

| (619) 201 8057

| info@hawkexcavator.com



[VISIT SITE NOW >>](#)

870-P TIER

While general information, pictures, and descriptions are provided, some illustrations and text may include product options and accessories NOT AVAILABLE in all regions, and in some countries products and accessories may require modifications or additions to ensure compliance with the local regulations of those countries.

Engine			
870 P-TIER			
Manufacturer and Model	Isuzu 6WG1-FT4		
Non-Road Emission Standard	EPA Final Tier 4/EU Stage IV		
Net Peak Power (ISO 9249)	382 kW (512 hp) at 1,800 rpm		
Cylinders	6		
Displacement	15.7 L (957 cu. in.)		
Off-Level Capacity	70% (35 deg.)		
Aspiration	Turbocharged, air-to-air charge-air cooler		
Cooling			
Cool-on-demand hydraulic-driven, suction-type fan with remote-mounted drive			
Powertrain			
2-speed propel with AutoShift			
Maximum Travel Speed			
Low	3.2 km/h (2.0 mph)		
High	4.7 km/h (2.9 mph)		
Drawbar Pull	57 085 kg (125,850 lb.)		
Hydraulics			
Open center, load sensing; in-cab mode selectors, illuminated: power modes (3), travel modes (2), and work modes (2)			
Main Pumps	2 variable-displacement pumps		System Operating Pressure
Maximum Rated Flow	566 L/m (150 gpm) x 2		Implement Circuits 31 900 kPa (4,627 psi)
Pilot Pump	1 gear		Travel Circuits 34 300 kPa (4,975 psi)
Maximum Rated Flow	30 L/m (7.9 gpm)		Swing Circuits 29 400 kPa (4,264 psi)
Pressure Setting	3900 kPa (566 psi)		Power Boost 34 300 kPa (4,975 psi)
Controls	Pilot levers, short stroke, low-effort hydraulic pilot controls with shutoff lever		
Cylinders			
Heat-treated, chrome-plated, polished cylinder rods; hardened steel (replaceable bushings) pivot pins			
	Bore	Rod Diameter	Stroke
Boom (2)	215 mm (8.5 in.)	150 mm (5.9 in.)	1835 mm (72.2 in.)
Arm (1)	225 mm (8.9 in.)	160 mm (6.3 in.)	2225 mm (87.6 in.)
Bucket (1)	200 mm (7.9 in.)	140 mm (5.5 in.)	1555 mm (61.2 in.)
Electrical			
Number of Batteries (12 volt)	2		
Battery Capacity	500 CCA		
Alternator Rating	50 amp		
Work Lights	5 halogen (1 mounted on frame, 2 mounted on boom, and 2 mounted on top of cab)		
Undercarriage			
Planetary final drives with axial-piston motors			
Rollers (each side)			Track
Carrier	3		Adjustment Hydraulic
Track	9		Guides Front and center
Shoes, Double-Bar Grousers (each side)	51		Chain Sealed and lubricated
Ground Pressure			
With 900-mm (36 in.) Double-Bar Grouser Shoes	84.8 kPa (12.0 psi)		
Swing Mechanism			
Speed	7.8 rpm		
Torque	269 000 Nm (198,404 lb.-ft.)		
Serviceability			
Refill Capacities		Refill Capacities (continued)	
Fuel Tank	1110 L (293 gal.)	Gearbox	
Cooling System	124 L (32.8 gal.)	Swing (each)	15.7 L (16.6 qt.)
Engine Oil With Filter	57 L (15.1 gal.)	Travel (each)	19 L (20.1 qt.)
Hydraulic Tank	500 L (132.1 gal.)	Pump Drive	6.2 L (6.6 qt.)
Hydraulic System	1042 L (275.3 gal.)	Diesel Exhaust Fluid (DEF) Tank	95 L (25.1 gal.)

[VISIT SITE NOW >>](#)

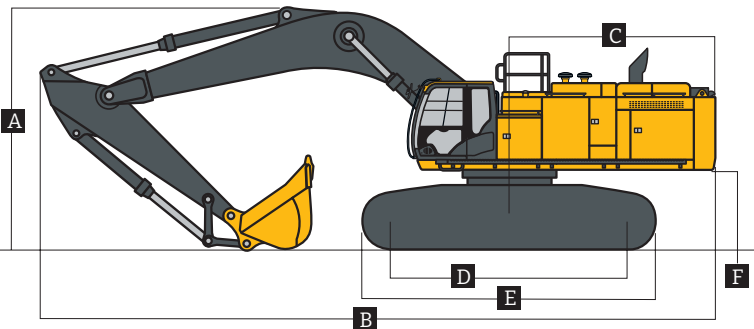
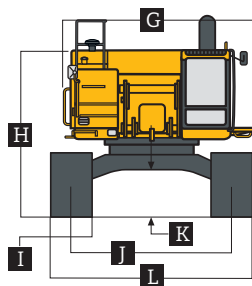
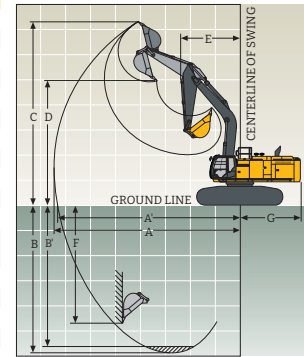


VISIT SITE NOW >>

870-P TIER

While general information, pictures, and descriptions are provided, some illustrations and text may include product options and accessories NOT AVAILABLE in all regions, and in some countries products and accessories may require modifications or additions to ensure compliance with the local regulations of those countries.

Operating Weights		870 P-TIER			
With full fuel tank; 79-kg (175 lb.) operator; 349-m ³ (4.57 cu. yd.), 1370-mm (54 in.), 3558-kg (7,845 lb.) bucket; 4.4-m (14 ft. 5 in.) arm; 12 400-kg (27,337 lb.) counterweight; counterweight-removal device; and 900-mm (36 in.) double-bar grouser shoes					
SAE Operating Weight	85 600 kg (188,716 lb.)				
Component Weights		Component Weights (continued)			
Undercarriage With 900 mm (36 in.) Double-Bar Grouser Shoes	33 966 kg (74,882 lb.)	Arm With Bucket Cylinder and Linkage			
1-Piece Boom (with arm cylinder)		3.7 m (12 ft. 1 in.)	4290 kg (9,458 lb.)		
8.4 m (27 ft. 7 in.)	8190 kg (18,056 lb.)	4.4 m (14 ft. 5 in.)	4630 kg (10,207 lb.)		
10.0 m (32 ft. 10 in.)	9390 kg (20,701 lb.)	2.95-m (9 ft. 8 in.)	ME 4620 kg (10,185 lb.)		
71-m (23 ft. 4 in.) Mass Excavating (ME) Boom (with arm cylinder)	7670 kg (16,909 lb.)	Boom-Lift Cylinders (2), Total Weight		1700 kg (3,748 lb.)	
Operating Dimensions					
Boom Length	8.4 m (27 ft. 7 in.)	8.4 m (27 ft. 7 in.)	71-m (23 ft. 4 in.) ME	10.0 m (32 ft. 10 in.)	
Arm Length	3.7 m (12 ft. 2 in.)	4.4 m (14 ft. 5 in.)	2.95-m (9 ft. 8 in.) ME	4.4 m (14 ft. 5 in.)	
Arm Digging Force					
SAE	315 kN (70,815 lb.)	273 kN (61,373 lb.)	378 kN (84,978 lb.)	273 kN (61,373 lb.)	
ISO	323 kN (72,613 lb.)	280 kN (62,946 lb.)	394 kN (88,575 lb.)	280 kN (62,946 lb.)	
Bucket Digging Force					
SAE	359 kN (80,706 lb.)	359 kN (80,706 lb.)	411 kN (92,396 lb.)	359 kN (80,706 lb.)	
ISO	399 kN (89,699 lb.)	399 kN (89,699 lb.)	472 kN (106,110 lb.)	399 kN (89,699 lb.)	
A Maximum Reach	14.10 m (46 ft. 3 in.)	14.91 m (48 ft. 11 in.)	12.34 m (40 ft. 6 in.)	16.55 m (54 ft. 4 in.)	
A Maximum Reach at Ground Level	13.82 m (45 ft. 4 in.)	14.64 m (48 ft. 0 in.)	12.02 m (39 ft. 5 in.)	16.32 m (53 ft. 7 in.)	
B Maximum Digging Depth	8.87 m (29 ft. 1 in.)	9.57 m (31 ft. 5 in.)	7.14 m (23 ft. 5 in.)	11.16 m (36 ft. 7 in.)	
B Maximum Digging Depth at 244-m (8 ft. 0 in.) Flat Bottom	8.74 m (28 ft. 8 in.)	9.46 m (31 ft. 0 in.)	7.00 m (23 ft. 0 in.)	11.04 m (36 ft. 3 in.)	
C Maximum Cutting Height	13.03 m (42 ft. 9 in.)	13.82 m (45 ft. 4 in.)	12.01 m (39 ft. 5 in.)	14.66 m (48 ft. 1 in.)	
D Maximum Dumping Height	9.08 m (29 ft. 9 in.)	9.74 m (31 ft. 11 in.)	8.13 m (26 ft. 8 in.)	10.81 m (35 ft. 6 in.)	
E Minimum Swing Radius	5.95 m (19 ft. 6 in.)	5.95 m (19 ft. 6 in.)	5.21 m (17 ft. 1 in.)	7.35 m (24 ft. 1 in.)	
F Maximum Vertical Wall	7.17 m (23 ft. 6 in.)	8.48 m (27 ft. 10 in.)	4.10 m (13 ft. 5 in.)	9.87 m (32 ft. 5 in.)	
G Tail-Swing Radius	4.60 m (15 ft. 1 in.)	4.60 m (15 ft. 1 in.)	4.60 m (15 ft. 1 in.)	4.60 m (15 ft. 1 in.)	
Machine Dimensions					
Arm Length	3.7 m (12 ft. 2 in.)	4.4 m (14 ft. 5 in.)	2.95-m (9 ft. 8 in.) ME With 71-m (23 ft. 4 in.) ME Boom		
A Overall Height With Arm	4.77 m (15 ft. 8 in.)	5.13 m (16 ft. 10 in.)	5.20 m (17 ft. 1 in.)		
B Overall Length With Arm	14.80 m (48 ft. 7 in.)	14.80 m (48 ft. 7 in.)	13.55 m (44 ft. 5 in.)		
C Rear-End Length/Tail-Swing Radius	4.54 m (14 ft. 11 in.)	4.54 m (14 ft. 11 in.)	4.54 m (14 ft. 11 in.)		
D Distance Between Idler/Sprocket Centerline	5.11 m (16 ft. 9 in.)	5.11 m (16 ft. 9 in.)	5.11 m (16 ft. 9 in.)		
E Undercarriage Length	6.36 m (20 ft. 10 in.)	6.36 m (20 ft. 10 in.)	6.36 m (20 ft. 10 in.)		
F Counterweight Clearance	1.68 m (5 ft. 6 in.)	1.68 m (5 ft. 6 in.)	1.68 m (5 ft. 6 in.)		
G Upperstructure Width	4.12 m (13 ft. 6 in.)	4.12 m (13 ft. 6 in.)	4.12 m (13 ft. 6 in.)		
H Cab Height	3.69 m (12 ft. 1 in.)	3.69 m (12 ft. 1 in.)	3.69 m (12 ft. 1 in.)		
I Track Width With Double-Bar Grouser Shoes	900 mm (36 in.)	900 mm (36 in.)	900 mm (36 in.)		
J Track Gauge With 900-mm (36 in.) Double-Bar Grouser Shoes					
Operating Position	3.45 m (11 ft. 4 in.)	3.45 m (11 ft. 4 in.)	3.45 m (11 ft. 4 in.)		
Transport Position	2.83 m (9 ft. 3 in.)	2.83 m (9 ft. 3 in.)	2.83 m (9 ft. 3 in.)		
K Ground Clearance	0.89 m (35 in.)	0.89 m (35 in.)	0.89 m (35 in.)		
L Width Over Track With 900-mm (36 in.) Double-Bar Grouser Shoes					
Operating Position	4.35 m (14 ft. 3 in.)	4.35 m (14 ft. 3 in.)	4.35 m (14 ft. 3 in.)		
Transport Position	3.73 m (12 ft. 3 in.)	3.73 m (12 ft. 3 in.)	3.73 m (12 ft. 3 in.)		



VISIT SITE NOW >>



VISIT SITE NOW >>

870-P TIER

While general information, pictures, and descriptions are provided, some illustrations and text may include product options and accessories NOT AVAILABLE in all regions, and in some countries products and accessories may require modifications or additions to ensure compliance with the local regulations of those countries.

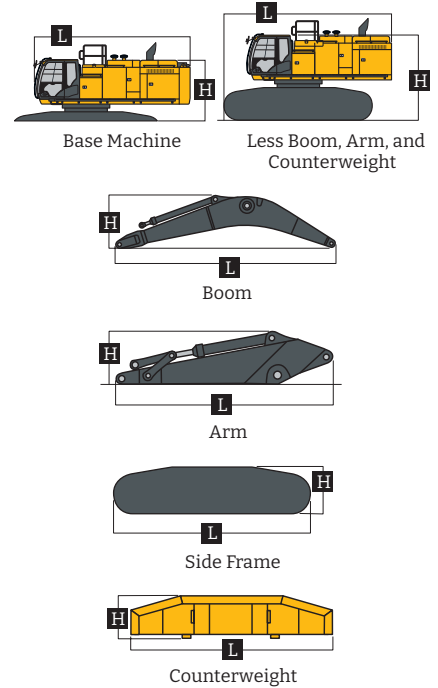
Packing Dimensions and Weights for Transportation				
870 P-TIER				
	Length (L at right)	Height (H at right)	Overall Width	Weight
Base Machine (without front attachment and side frame)*	6.50 m (21 ft. 4 in.)	2.96 m (9 ft. 9 in.)	3.42 m (11 ft. 3 in.)	29 000 kg (63,934 lb.)
Side Frame (each)				
With 900-mm (36 in.) Shoes	6.36 m (20 ft. 10 in.)	1.50 m (4 ft. 11 in.)	1.42 m (4 ft. 8 in.)	13 100 kg (28,881 lb.)
Counterweight, Standard	3.36 m (11 ft. 0 in.)	1.62 m (5 ft. 4 in.)	0.72 m (28 in.)	13 333 kg (29,394 lb.)
Boom				
7.1 m (23 ft. 4 in.)	7.49 m (24 ft. 7 in.)	2.70 m (8 ft. 10 in.)	1.45 m (4 ft. 9 in.)	7670 kg (16,909 lb.)
8.4 m (27 ft. 7 in.)	8.78 m (28 ft. 10 in.)	2.50 m (8 ft. 2 in.)	1.45 m (4 ft. 9 in.)	8190 kg (18,056 lb.)
10.0 m (32 ft. 10 in.)	10.37 m (34 ft. 0 in.)	2.70 m (8 ft. 10 in.)	1.45 m (4 ft. 9 in.)	9390 kg (20,701 lb.)
Arm				
2.95 m (9 ft. 8 in.)	4.46 m (14 ft. 8 in.)	1.66 m (5 ft. 5 in.)	0.85 m (33 in.)	4620 kg (10,185 lb.)
3.7 m (12 ft. 2 in.)	5.29 m (17 ft. 4 in.)	1.42 m (4 ft. 8 in.)	0.82 m (32 in.)	4290 kg (9,458 lb.)
4.4 m (14 ft. 5 in.)	5.88 m (19 ft. 3 in.)	1.42 m (4 ft. 8 in.)	0.82 m (32 in.)	4630 kg (10,207 lb.)
Base Machine (without front attachment)*				
With 900-mm (36 in.) Shoes	7.53 m (24 ft. 8 in.)	3.89 m (12 ft. 9 in.) / 3.86 m (12 ft. 8 in.) w/o exhaust stack	3.73 m (12 ft. 3 in.)	55 000 kg (121,254 lb.)

*Steps on the track frame and side hydraulic oil tank plus handrails on the upper battery box, upper fuel tank, and side hydraulic oil tank must be removed.

Lift Capacities

Boldface type indicates hydraulically limited capacity, lightface type indicates stability-limited capacities, in kg (lb.). Machine equipped with standard gauge and situated on firm, uniform supporting surface. Total load includes weight of cables, hook, etc. Figures do not exceed 87 percent of hydraulic capacities or 75 percent of weight needed to tip machine. All lift capacities are based on ISO 10567 (with power boost).

LOAD POINT HEIGHT	HORIZONTAL DISTANCE FROM CENTERLINE OF ROTATION													
	3.0 m (10 ft.)		4.5 m (15 ft.)		6.0 m (20 ft.)		7.5 m (25 ft.)		9.0 m (30 ft.)		10.5 m (35 ft.)		12.0 m (40 ft.)	
	Over Front	Over Side	Over Front	Over Side	Over Front	Over Side	Over Front	Over Side	Over Front	Over Side	Over Front	Over Side	Over Front	Over Side
With 8.4-m (27 ft. 7 in.) boom, 3.7-m (12 ft. 2 in.) arm, and 900-mm (36 in.) double-bar grouser shoes, less bucket														
9.0 m (30 ft.)									16 340 (35,920)	16 340 (35,920)				
7.5 m (25 ft.)									17 020 (37,120)	17 020 (37,120)	15 360 (30,180)	14 800 (30,180)		
6.0 m (20 ft.)					25 080 (53,870)	25 080 (53,870)	20 720 (44,810)	20 720 (44,810)	18 230 (39,620)	18 230 (39,620)	16 730 (36,550)	14 530 (31,280)		
4.5 m (15 ft.)					29 830 (64,030)	29 830 (64,030)	23 280 (50,260)	23 280 (50,260)	19 710 (42,740)	17 840 (38,500)	17 540 (38,190)	14 160 (30,500)		
3.0 m (10 ft.)					33 730 (72,620)	30 270 (65,390)	25 630 (55,380)	22 190 (47,930)	21 160 (45,850)	17 180 (37,080)	16 010 (34,700)	13 760 (29,660)		
1.5 m (5 ft.)					28 830 (69,330)	28 770 (62,970)	27 300 (59,070)	21 380 (46,140)	22 300 (48,320)	16 630 (35,890)	19 070 (41,400)	13 410 (28,920)		
Ground Line					32 970 (53,870)	26 980 (61,950)	28 060 (60,790)	20 890 (45,050)	22 930 (49,680)	16 260 (35,070)	19 400 (42,050)	13 160 (28,400)		
-1.5 m (-5 ft.)			21 760 (49,770)	21 760 (49,770)	34 970 (75,890)	28 700 (61,760)	27 880 (60,430)	20 680 (44,590)	22 870 (49,520)	16 070 (34,680)	19 140 (41,330)	13 060 (28,200)		
-3.0 m (-10 ft.)	23 870 (53,800)	23 870 (53,800)	33 440 (76,230)	33 440 (76,230)	32 980 (71,540)	28 870 (62,130)	26 690 (57,790)	20 720 (44,680)	21 910 (47,300)	16 090 (34,730)				
-4.5 m (-15 ft.)			36 510 (79,120)	36 510 (79,120)	26 690 (64,180)	29 290 (63,060)	24 190 (52,110)	21 000 (45,320)	19 440 (41,390)	16 370 (35,420)				
-6.0 m (-20 ft.)			29 530 (63,300)	29 530 (63,300)	24 300 (51,890)	24 300 (51,890)	19 290 (40,520)	19 290 (40,520)						



VISIT SITE NOW >>



870-P TIER

While general information, pictures, and descriptions are provided, some illustrations and text may include product options and accessories NOT AVAILABLE in all regions, and in some countries products and accessories may require modifications or additions to ensure compliance with the local regulations of those countries.

Lift Capacities (continued) 870 P-TIER

Boldface type indicates hydraulically limited capacity; lightface type indicates stability-limited capacities, in kg (lb.). Machine equipped with standard gauge and situated on firm, uniform supporting surface. Total load includes weight of cables, hook, etc. Figures do not exceed 87 percent of hydraulic capacities or 75 percent of weight needed to tip machine. All lift capacities are based on ISO 10567 (with power boost).

HORIZONTAL DISTANCE FROM CENTERLINE OF ROTATION															
LOAD POINT HEIGHT	3.0 m (10 ft.)		4.5 m (15 ft.)		6.0 m (20 ft.)		7.5 m (25 ft.)		9.0 m (30 ft.)		10.5 m (35 ft.)		12.0 m (40 ft.)		
	Over Front	Over Side	Over Front	Over Side	Over Front	Over Side	Over Front	Over Side	Over Front	Over Side	Over Front	Over Side	Over Front	Over Side	
With 8.4-m (27 ft. 7 in.) boom, 4.4-m (14 ft. 5 in.) arm, and 900-mm (36 in.) double-bar grouser shoes, less bucket															
9.0 m (30 ft.)										(35,920)	(35,920)	12 210 (24,390)	12 210 (24,390)		
7.5 m (25 ft.)									15 670 (34,180)	15 670 (34,180)	14 690 (31,160)	14 690 (31,160)			
6.0 m (20 ft.)							19 050 (41,210)	19 050 (41,210)	16 970 (36,870)	16 970 (36,870)	15 650 (34,160)	14 640 (31,510)	11 370 (21,130)	11 370 (21,130)	
4.5 m (15 ft.)					27 260 (58,560)	27 260 (58,560)	21 690 (46,850)	21 690 (46,850)	18 540 (40,210)	17 980 (38,770)	16 580 (36,090)	14 200 (30,600)	13 930 (27,770)	11 460 (24,630)	
3.0 m (10 ft.)					31 600 (68,030)	30 790 (66,490)	24 250 (52,400)	22 390 (48,340)	20 130 (43,640)	17 240 (37,190)	17 560 (38,160)	13 740 (29,620)	15 840 (31,840)	11 200 (24,110)	
1.5 m (5 ft.)					32 080 (74,310)	29 340 (63,280)	26 270 (56,830)	21 420 (46,220)	19 360 (41,870)	16 600 (35,810)	18 420 (39,980)	13 330 (28,740)	16 290 (33,630)	10 960 (23,600)	
Ground Line					31 870 (74,870)	28 600 (61,600)	27 460 (59,460)	20 770 (44,800)	22 380 (48,510)	16 130 (34,790)	18 980 (41,160)	13 020 (28,070)	16 160 (30,710)	10 780 (23,250)	
-1.5 m (-5 ft.)			19 200 (43,840)	19 200 (43,840)	35 270 (76,460)	28 320 (60,960)	27 740 (60,100)	20 430 (44,050)	22 670 (49,100)	15 850 (34,190)	19 060 (41,260)	12 830 (27,680)			
-3.0 m (-10 ft.)	19 330 (43,600)	19 330 (43,600)	27 850 (63,450)	27 850 (63,450)	33 890 (73,460)	28 360 (57,450)	27 060 (58,590)	20 360 (43,890)	22 170 (47,950)	15 770 (34,030)	18 390 (39,580)	12 810 (27,680)			
-4.5 m (-15 ft.)	28 260 (63,870)	28 260 (63,870)	39 180 (85,850)	39 180 (85,850)	29 280 (63,220)	28 660 (61,710)	25 240 (54,480)	20 530 (44,270)	20 570 (44,190)	15 920 (34,380)					
-6.0 m (-20 ft.)			33 610 (72,270)	33 610 (72,270)	26 970 (57,880)	26 970 (57,880)	21 710 (46,330)	20 980 (45,340)	16 690 (35,340)	16 420 (35,340)					
With 8.4-m (27 ft. 7 in.) boom, 4.4-m (14 ft. 5 in.) arm, and 900-mm (36 in.) double-bar grouser shoes, less bucket															
7.5 m (25 ft.)									21 750 (47,580)	21 750 (47,580)					
6.0 m (20 ft.)					26 920 (58,150)	26 920 (58,150)	23 190 (50,420)	23 190 (50,420)	21 180 (46,380)	18 690 (40,190)					
4.5 m (15 ft.)					31 060 (66,960)	31 060 (66,960)	25 250 (54,730)	24 060 (51,900)	24 060 (48,030)	22 050 (39,270)					
3.0 m (10 ft.)					34 780 (75,070)	31 880 (68,790)	27 280 (59,100)	23 070 (49,780)	23 060 (50,100)	17 690 (38,140)					
1.5 m (5 ft.)					36 830 (79,700)	30 640 (66,050)	28 690 (62,150)	22 270 (48,050)	23 750 (51,520)	17 220 (37,130)					
Ground Line					36 950 (80,120)	30 010 (64,620)	29 040 (62,920)	21 760 (46,930)	23 690 (51,270)	16 900 (36,460)					
-1.5 m (-5 ft.)			42 190 (97,220)	42 190 (97,220)	35 310 (76,570)	29 820 (64,180)	28 000 (60,580)	21 550 (46,480)	22 140 (46,480)	16 830 (36,480)					
-3.0 m (-10 ft.)	41 770 (94,710)	41 770 (94,710)	39 770 (86,290)	39 770 (86,290)	31 640 (68,380)	30 000 (64,590)	24 830 (53,200)	21 700 (46,850)							
-4.5 m (-15 ft.)			30 980 (66,410)	30 980 (66,410)	24 440 (51,760)	24 440 (51,760)									



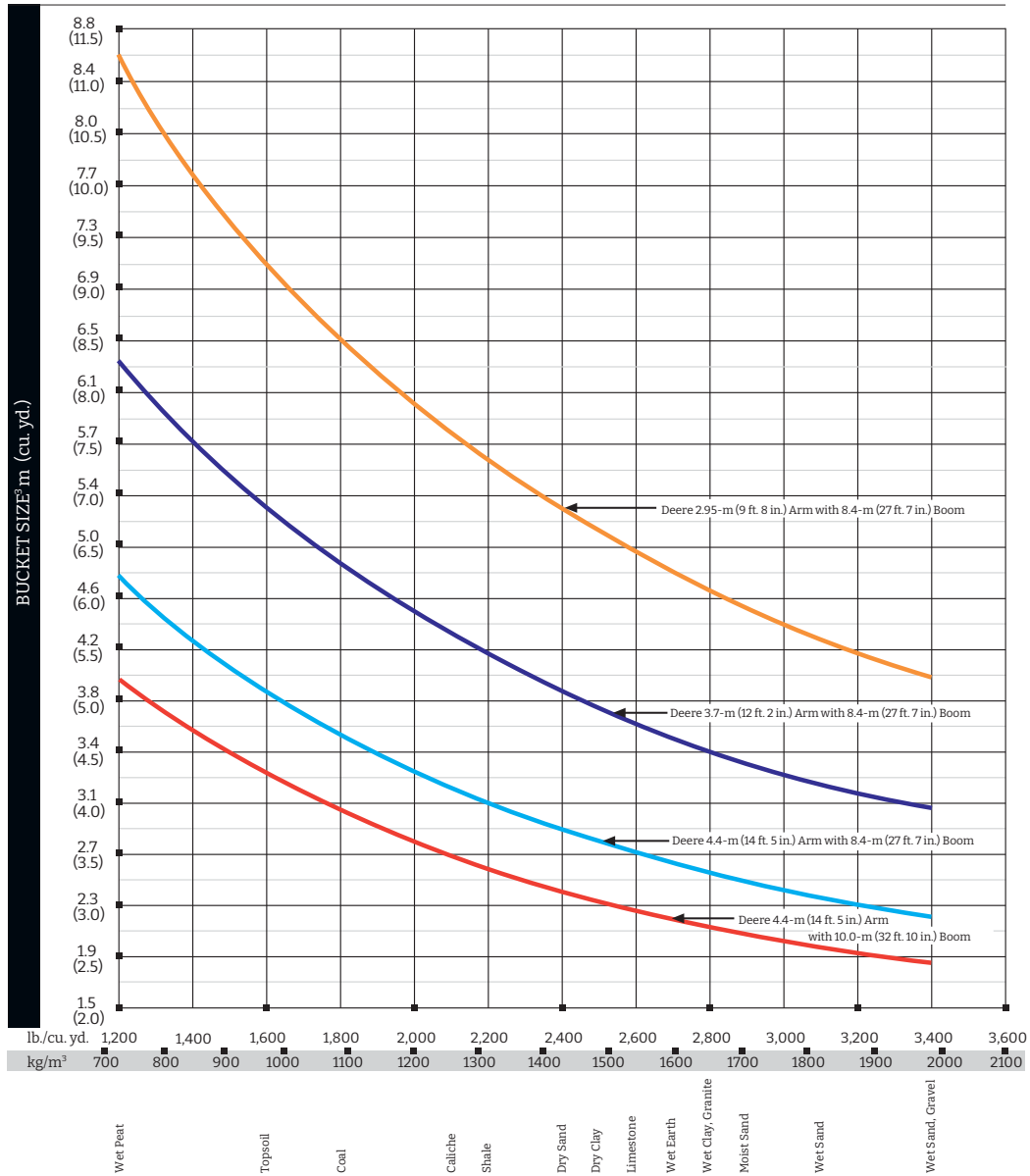
[VISIT SITE NOW >>](#)

870-P TIER

While general information, pictures, and descriptions are provided, some illustrations and text may include product options and accessories NOT AVAILABLE in all regions, and in some countries products and accessories may require modifications or additions to ensure compliance with the local regulations of those countries.

Bucket Selection Guide*

870 P-TIER



* Contact your John Deere dealer for optimum bucket and attachment selections. These recommendations are for general conditions and average use. Does not include optional equipment such as thumbs or couplers. Larger buckets may be possible when using light materials, for flat and level operations, less compacted materials, and volume loading applications such as mass excavation applications in ideal conditions. Smaller buckets are recommended for adverse conditions such as off-level applications, rocks, and uneven surfaces. Bucket capacity indicated is SAE heaped.

[VISIT SITE NOW >>](#)



VISIT SITE NOW >>

870-P TIER

Additional equipment

Key: ● Standard ▲ Optional or special
See your John Deere dealer for further information.

870 P Engine

- Auto-idle system
- Automatic belt-tension device
- Batteries (2 - 12 volt)
- Coolant recovery tank
- Dual-element dry-type air filter
- Electronic engine control
- Enclosed fan guard (conforms to SAE J1308)
- Engine coolant to -37 deg. C (-34 deg. F)
- Engine oil-sampling valve
- Programmable auto shutdown
- Fuel filter with water separator
- Full-flow oil filter
- Turbocharger with charge air cooler
- Underhood selective catalytic reduction (SCR) aftertreatment device less diesel particulate filter (DPF)
- Cool-on-demand hydraulic-driven fan
- Glow-plug start aid
- 500-hour engine-oil-change interval
- 70% (35 deg.) off-level capability
- Hydraulic fan reverser

Hydraulic System

- Reduced-drift valve for boom down, arm in
- Auxiliary hydraulic valve section
- Spring-applied, hydraulically released automatic swing brake
- Auxiliary hydraulic-flow adjustments through monitor
- Auto power lift
- 4,000-hour hydraulic-oil-change interval
- Hydraulic oil-sampling valve
- ▲ Auxiliary pilot and electric controls
- ▲ Load-lowering control device
- ▲ Single-pedal propel control
- ▲ Pattern changer

Undercarriage

- Planetary drive with axial piston motors
- Propel motor shields
- Spring-applied, hydraulically released automatic propel brake
- Track guides, front idler and center
- 2-speed propel with AutoShift
- Upper carrier rollers (3)
- Sealed and lubricated track chain
- Double-bar grouser shoes, 900 mm (36 in.)

870 P Upperstructure

- Right- and left-hand mirrors
- Vandal locks with ignition key: Cab door / Fuel cap / Service doors / Toolbox
- Debris screen in side panel
- Service platform, left side
- Remote-mounted engine oil and fuel filters
- Counterweight-removal system

Front Attachments

- Centralized lubrication system
- Dirt seals on all bucket pins
- Lubricator with hose reel and grease gun
- No-boom-arm option
- ▲ Boom, 8.4 m (27 ft. 7 in.)
- ▲ Boom, mass excavating (ME), 7.1 m (23 ft. 4 in.)
- ▲ om, reach, 10.0 m (32 ft. 10 in.)
- ▲ Arm, 3.7 m (12 ft. 2 in.)
- ▲ Arm, 4.4 m (14 ft. 5 in.)
- ▲ Arm, ME, 2.95 m (9 ft. 8 in.)
- ▲ Boom cylinder with plumbing to mainframe for no-boom-arm option

Operator's Station

- Adjustable independent-control positions (levers-to-seat, seat-to-pedals)
- AM/FM radio
- Auto climate control/air conditioner/heater/pressurizer
- Built-in Operator's Manual storage compartment and manual
- Cell-phone power outlet, 12 volt, 60 watt, 5 amp
- Coat hook
- Deluxe air-suspension heated cloth seat with 100-mm (4 in.) adjustable armrests
- Floor mat
- Front windshield wiper with intermittent speeds
- Gauges (illuminated): Diesel Exhaust Fluid (DEF) / Engine coolant / Fuel
- Horn, electric
- Hourmeter, electric
- Hydraulic shutoff lever, all controls
- Hydraulic warm-up control
- Interior light
- Large cup holder
- Machine Information Center (MIC)

870 P Operator's Station (continued)

- Mode selectors (illuminated): Power modes (3) / Travel modes (2) / Work modes (2) / Boom mode
 - Multifunction, color LCD monitor with: Diagnostic capability / Multiple-language capabilities / Maintenance tracking / Clock / System monitoring with alarm features: Auto-idle indicator, engine air cleaner restriction indicator light, engine check, engine coolant temperature indicator light with audible alarm, engine oil pressure indicator light with audible alarm, low-alternator-charge indicator light, low-fuel indicator light, low DEF indication with audible alarm, fault code alert indicator, fuel-rate display, wiper-mode indicator, work-lights-on indicator and work-mode indicator
 - Fluid-level switch and indicator light for engine coolant and engine oil
 - Motion alarm with cancel switch (conforms to SAE J994)
 - Power-boost switch on right console lever
 - Propel pedals and levers
 - SAE 2-lever control pattern
 - Seat belt, 51 mm (2 in.), retractable
 - Tinted glass
 - Transparent tinted overhead hatch
 - Hot/cold beverage compartment
 - ▲ Monitor system with alarm features: Hydraulic oil filter restriction indicator light
 - ▲ Protection screens for cab front, rear, and side
 - ▲ Seat belt, 76 mm (3 in.), non-retractable
 - ▲ Window vandal-protection covers
- #### Electrical
- Right rear left 270-deg. camera system with LED surround lighting
 - 50-amp alternator
 - Blade-type multi-fused circuits
 - Positive-terminal battery covers
- JDLink™ wireless communication system (available in specific countries; see your dealer for details)
- ▲ Cab extension wiring harness
- #### Lights
- LED work lights

While general information, pictures, and descriptions are provided, some illustrations and text may include product options and accessories NOT AVAILABLE in all regions, and in some countries products and accessories may require modifications or additions to ensure compliance with the local regulations of those countries.

Net engine power is with standard equipment including air cleaner, exhaust system, alternator, and cooling fan, at test conditions specified per ISO 9249. No derating is required up to 2000-m (6,560 ft.) altitude. Specifications and design subject to change without notice. Wherever applicable, specifications are in accordance with SAE standards. Except where otherwise noted, these specifications are based on a unit with 1370-mm (54 in.) bucket, 12,400-kg (27,337 lb.) counterweight, 900-mm (36 in.) double-bar grouser shoes, full fuel tank, and 79-kg (175 lb.) operator.

VISIT SITE NOW >>