



HAWK

Reach Beyond, with HAWK.

[VISIT SITE NOW >>](#)

ZX250LC-6



SPEC SUMMARY

	ZX250LC-6
Operating Weight	59,525 lb. (27,000 kg)
Net Power (ISO 9249)	177 hp (132 kW) @ 2,000 rpm

ZAXIS 250
Hydraulic Excavator

[VISIT SITE NOW >>](#)



HAWK

Reach Beyond, with HAWK.

[VISIT SITE NOW >>](#)

BOOST YOUR UPTIME

Ease of maintenance

The engine cover opens wide to reveal improved access to the engine compartment and components, making maintenance easier.

Conveniently located filters make daily inspections and maintenance easier.

Auto-Idle

Auto-Idle reduces engine speed when the machine is not working for 4 seconds.

Auto-shutdown

Shuts down your excavator if left running between 1 to 30 minutes depending on the setting set within the cab monitor.

Grouped maintenance points with easy access.



[VISIT SITE NOW >>](#)

www.hawkexcavator.com

| (619) 201 8057

| info@hawkexcavator.com



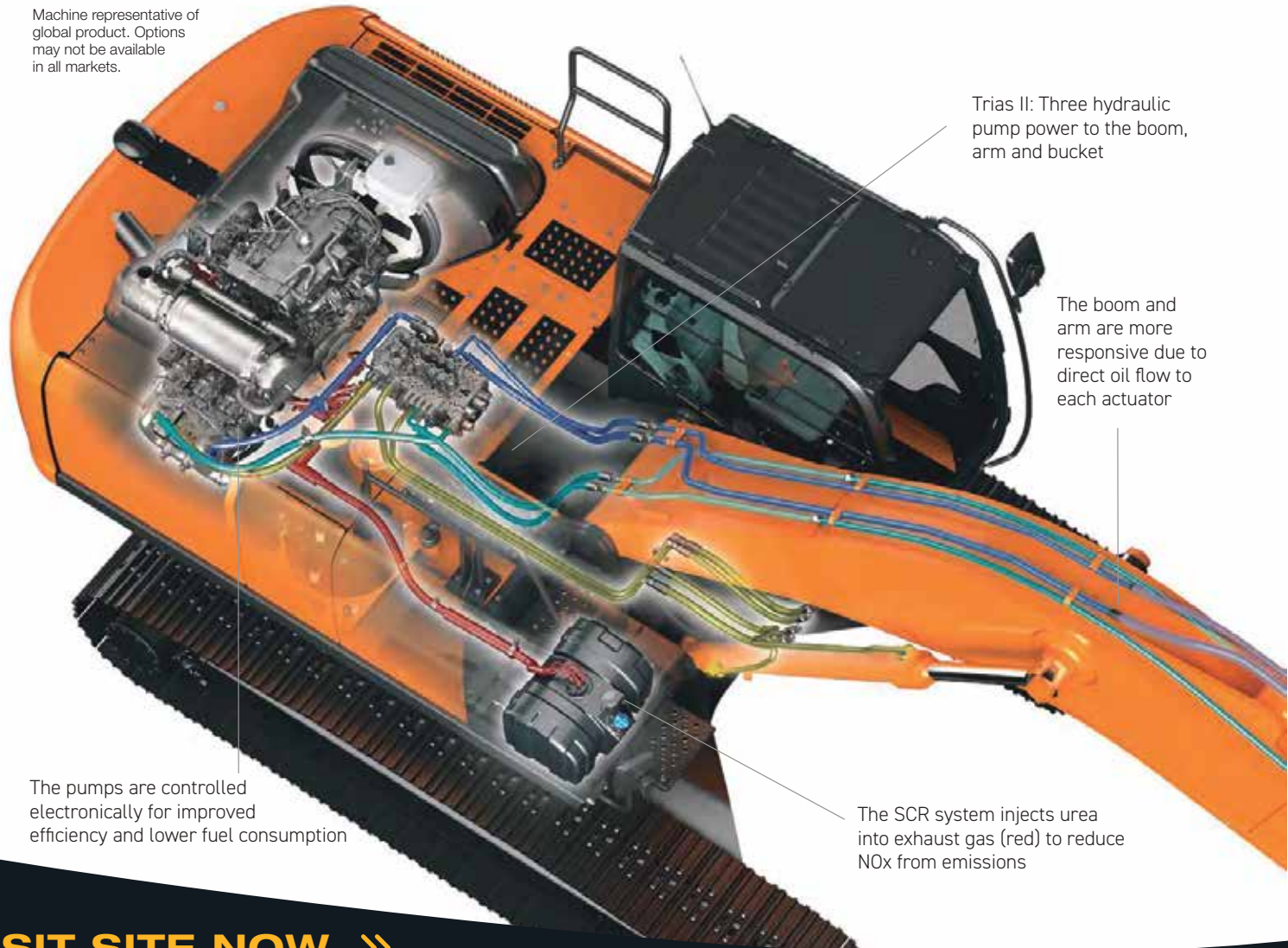
HAWK

Reach Beyond, with HAWK.

VISIT SITE NOW >>

PERFORMANCE AND FINE CONTROL

Machine representative of global product. Options may not be available in all markets.



Trias II: Three hydraulic pump power to the boom, arm and bucket

The boom and arm are more responsive due to direct oil flow to each actuator

The pumps are controlled electronically for improved efficiency and lower fuel consumption

The SCR system injects urea into exhaust gas (red) to reduce NOx from emissions

VISIT SITE NOW >>

www.hawkexcavator.com

| (619) 201 8057

| info@hawkexcavator.com



VISIT SITE NOW >>

ZX250LC-6 SPECIFICATIONS

ENGINE

Model	Isuzu 4HK1
Type	4-cycle water-cooled, common rail direct injection
Aspiration	Variable geometry turbocharged, intercooled, cooled EGR
Aftertreatment	DOC and SCR system
No. of cylinders	4
Rated power	
ISO 14396: 2002 Gross	188 hp (140 kW) at 2,000 rpm
ISO 9249: 2007 Net.....	177 hp (132 kW) at 2,000 rpm
Maximum torque	499 lbf-ft (676 Nm) at 1,800 rpm
Piston displacement	317 cu. in. (5.19L)
Bore and stroke	4.5" x 4.7" (115 mm x 125 mm)
Batteries	2 x 12 V/126 Ah

HYDRAULIC SYSTEM

Hydraulic Pumps

Main pumps	3 variable displacement axial piston pumps
Maximum oil flow	1 x 52.8 gal/m (1 x 200 L/min)
Pilot pump	2 x 59.2 gal/m (2 x 224 L/min)
Maximum oil flow	1 gear pump
Maximum oil flow	9.4 gal/m (35.5 L/min)

Hydraulic Motors

Travel	2 variable displacement axial piston motors
Swing	1 axial piston motor

Relief Valve Settings

Implement circuit	4,975 psi (34.3MPa)
Swing circuit	4,830 psi (32.4MPa)
Travel circuit	4,975 psi (34.3MPa)
Pilot circuit	566 psi (3.9MPa)
Power boost	5,511 psi (38.0MPa)

Hydraulic Cylinders

Unit: in (mm)

	Quantity	Bore	Rod diameter
Boom	2	4.9" (125)	3.5" (90)
Arm	1	5.5" (140)	3.9" (100)
Bucket	1	5.1" (130)	3.5" (90)

UPPERSTRUCTURE

Revolving Frame

D-section frame for resistance to deformation.

Swing Device

Axial piston motor with planetary reduction gear is bathed in oil. Swing circle is single-row. Swing parking brake is spring-set/hydraulic-released disc type.

Swing speed	11.0 rpm
Swing torque	57,161 lbf-ft (77.5 kNm)

UNDERCARRIAGE

Tracks

Tractor-type undercarriage. Welded track frame using selected materials. Side frame welded to track frame. Lubricated track rollers, idlers, and sprockets with floating seals. Track shoes with triple grousers made of induction-hardened rolled alloy. Heat-treated connecting pins with dirt seals. Hydraulic (grease) track adjusters with shock-absorbing recoil springs.

Numbers of Rollers and Shoes on Each Side

Upper rollers	2
Lower rollers	9
Track shoes	51
Track guards	3

Travel Device

Each track driven by 2-speed axial piston motor. Parking brake is spring-set/hydraulic-released disc type. Automatic transmission system: High-Low.

Travel speeds.....	High: 0 to 3.4 mph (0 to 5.5 km/h)
	Low: 0 to 2.2 mph (0 to 3.4 km/h)
Maximum traction force	49,908 lbf (222 kN)
Gradeability.....	70% (35 degree) continuous

ENVIRONMENT

Engine Emissions	EPA Final Tier 4/EU Stage IV
------------------------	------------------------------

SOUND LEVEL

Sound level in cab according to ISO 6396: 2008	*LpA 67 dB(A)
External sound level according to ISO 6395: 2008 and EU Directive 2000/14/EC	*LwA 102 dB(A)
*At PWR mode	

SERVICE REFILL CAPACITIES

Unit: gal (L)

Fuel tank	135 (510)
Engine coolant	9 (34)
Engine oil	7 (26)
Swing device.....	2.4 (9.1)
Travel device (each side).....	2.1 (7.8)
Hydraulic system.....	77 (290)
Hydraulic oil tank.....	41 (156)
DEF/AdBlue® tank.....	18 (70)

VISIT SITE NOW >>



[VISIT SITE NOW >>](#)

WEIGHTS AND GROUND PRESSURE

Operating Weight and Ground Pressure

Shoe type	Shoe width Unit: in (mm)	Operating weight Unit: lb (kg)	Ground pressure Unit: psi (kPa)
Triple grouser shoes	32" (800)	59,525 (27,000)	5.8 (40)

* Including 1.31 yd³ (1.0 m³) (ISO 7451: 2007 heaped) bucket Weight 1,878 lb (852 kg) and counterweight 13,669 lb (6,200 kg).

BASIC MACHINE WEIGHT AND COMPONENTS WEIGHT

Basic Machine Weight and Overall Width

Excluding front end attachment, fuel, hydraulic oil and coolant, etc. Including counterweight.

Shoe type	Shoe width Unit: in (mm)	Weight Unit: lb (kg)	Overall width Unit: ft-in (mm)
Triple grouser shoes	32" (800)	47,619 (21,600)	11' 1" (3,390)

Components Weight

Unit: lb (kg)

Counterweight	13,669 (6,200)
Boom (with arm cylinder and boom cylinder)	5,979 (2,712)
Arm 11' 10" (3.61 m) (with bucket cylinder)	3,188 (1,446)
Bucket ISO 7451: 2007 1.31 yd ³ . (1.0 m ³)	1,878 (852)

BUCKET AND ARM DIGGING FORCE

Unit: lbf (kN)

Arm length	11' 10" (3.61 m)
Arm crowd force* (ISO 6015: 2006)	25,628 (114)
Bucket digging force* (ISO 6015: 2006)	42,264 (188)

* At power boost

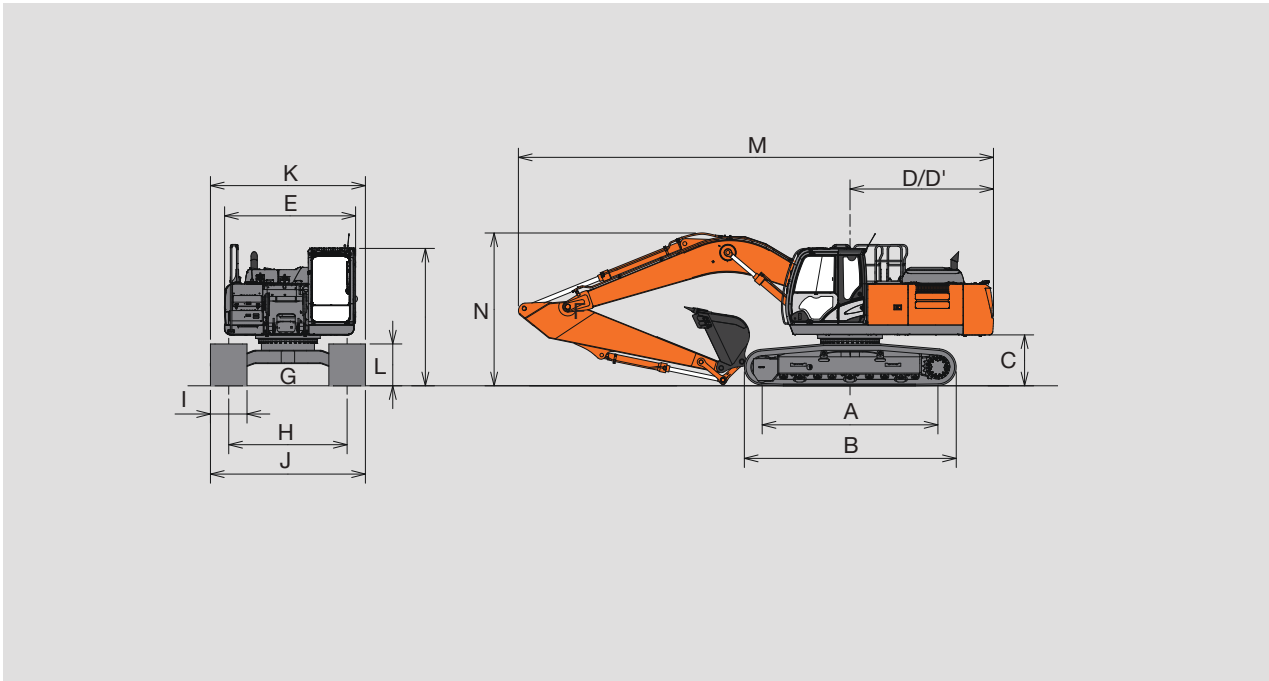
[VISIT SITE NOW >>](#)



VISIT SITE NOW >>

ZX250LC-6 SPECIFICATIONS

DIMENSIONS



Unit: ft-in (mm)

	ZX250LC-6
A Distance between tumblers	12' 4" (3,840)
B Undercarriage length	15' 3" (4,640)
C* Counterweight clearance	3' 5" (1,050)
D Rear-end swing radius	10' 4" (3,140)
D' Rear-end length	10' 4" (3,140)
E Overall width of upperstructure	9' 5" (2,870)
F Overall height of cab	9' 11" (3,010)
G* Min. ground clearance	1' 6" (460)
H Track gauge	8' 6" (2,590)
I Track shoe width	32" (800)
J Undercarriage width	11' 1" (3,390)
K Overall width	11' 1" (3,390)
L* Track height with triple grouser shoes	3" (920)
M Overall length with arm 11' 10" (3.61 m)	34' 2" (10,400)
N Overall height of boom with arm 11' 10" (3.61 m)	10' 11" (3,320)

* Excluding track shoe lug

VISIT SITE NOW >>

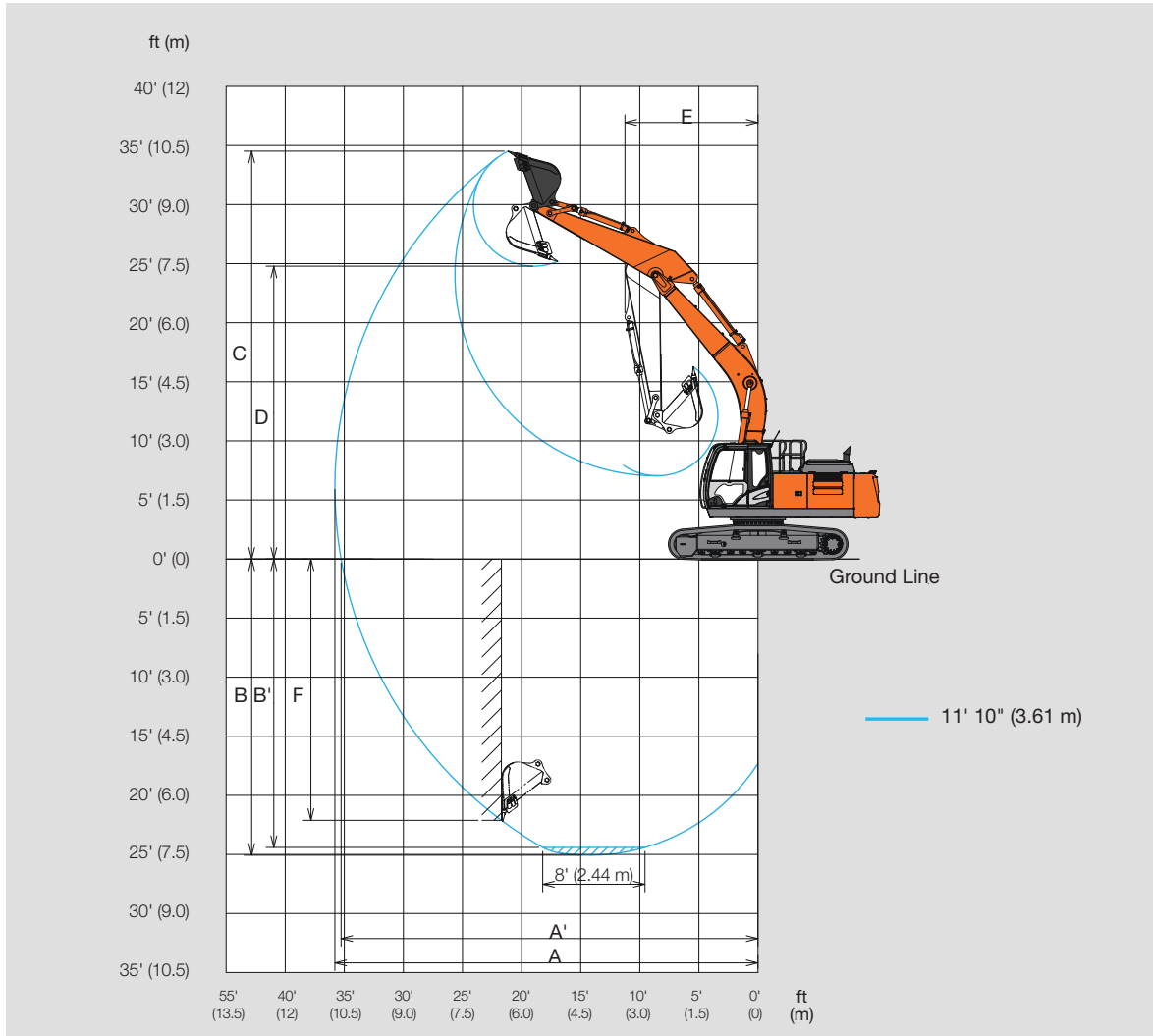


HAWK

Reach Beyond, with HAWK.

VISIT SITE NOW >>

WORKING RANGES



Unit: ft-in (mm)

	ZX250LC-6
Arm length	11' 10" (3,61 m)
A Max. digging reach	35' 10" (10,910)
A' Max. digging reach (on ground)	35' 3" (10,750)
B Max. digging depth	25' (7,610)
B' Max. digging depth for 8' (2.44 m) level	24' 5" (7,440)
C Max. cutting height	34' 8" (10,560)
D Max. dumping height	24' 10" (7,580)
E Min. swing radius	11' 3" (3,430)
F Max. vertical wall digging depth	22' 1" (6,740)

Excluding track shoe lug

VISIT SITE NOW >>



[VISIT SITE NOW >>](#)

ZX250LC-6 MACHINE CAPACITIES

Boldface type indicates hydraulically limited capacity; lightface type indicates stability limited capacities, in lb (kg). All machine capacities are based on ISO 10567 (with power boost). Ratings at bucket lift hook; Machine equipped with standard counterweight and standard gauge; and situated on firm, uniform supporting surface. Total load includes weight of cables, hook, etc. Figures do not exceed 87 percent of hydraulic capacities or 75 percent of weight needed to tip machine.



A: Load radius
B: Load point height
C: Machine capacity

ZX250LC-6

Rating over-front Rating over-side or 360 degrees Unit: lb (kg)

Conditions	Load point height ft (m)	Load radius											
		5' (1.5 m)		10' (3.0 m)		15' (4.5 m)		20' (6.0 m)		25' (7.5 m)		30' (9.0 m)	
Boom 19' 8" H (6.0 m H)	25' (7.5 m)												
	20' (6.0 m)							9,330 (4,230)	9,330 (4,230)	8,410 (3,810)	8,410 (3,810)		
	15' (4.5 m)							11,030 (5,000)	11,030 (5,000)	10,240 (4,640)	10,240 (4,640)		
	10' (3.0 m)			28,720 (13,020)	28,720 (13,020)	17,560 (7,960)	17,560 (7,960)	13,500 (6,120)	13,500 (6,120)	11,530 (5,220)	10,140 (4,590)	7,130 (3,230)	7,130 (3,230)
Arm 11' 10" (3.61 m)	5' (1.5 m)					22,580 10240	21,710 (9,840)	16,090 (7,290)	10,140 (4,590)	12,930 (5,860)	9,720 (4,400)	8,430 (3,820)	7,100 (3,220)
	0 (Ground)			10,680 (4,840)	10,680 (4,840)	25,730 (11,670)	20,670 (9,370)	18,090 (8,200)	9,720 (4,400)	14,080 (6,380)	9,380 (4,250)	7,710 (3,490)	6,940 (3,140)
Counterweight 13,669 lb (6,200 kg)	-5' (-1.5 m)	10,090 (4,570)	10,090 (4,570)	17,850 (8,090)	17,850 (8,090)	26,710 (12,110)	20,260 (9,180)	19,050 (8,640)	9,380 (4,250)	14,520 (6,580)	9,180 (4,160)		
Triple grouser shoes 32" (800 mm)	-10' (-3.0 m)	18,380 (8,330)	18,380 (8,330)	28,040 (12,710)	28,040 (12,710)	25,800 (11,700)	20,290 (9,200)	18,670 (8,460)	9,180 (4,160)	13,950 (6,320)	9,210 (4,170)		
	-15' (-4.5 m)	28,920 (13,110)	28,920 (13,110)	32,950 (14,940)	32,950 (14,940)	22,660 (10,270)	20,690 (9,380)	16,190 (7,340)	9,210 (4,170)				
	-20' (-6.0 m)												

[VISIT SITE NOW >>](#)



VISIT SITE NOW >>

ZX250LC-6 EQUIPMENT

● : Standard equipment ○ : Optional equipment

ENGINE	ZX250LC-6
Aftertreatment device	●
Air cleaner double filters	●
Alternator 50 A	●
Auto idle system	●
Auto shut-down control	●
Cartridge-type engine oil filter	●
Cartridge-type fuel main filter	●
Cold fuel resistance valve	●
ConSite OIL (sensor)*	●
DEF/AdBlue® tank inlet strainer and extension filler	●
DEF/AdBlue® tank	●
Dry-type air filter with evacuator valve (with air filter restriction indicator)	●
Dust-proof indoor net	●
ECO/PWR/HP mode control	●
Electrical fuel feed pump	●
Engine oil drain coupler	●
Expansion tank	●
Fan guard	●
Fuel cooler	●
Fuel pre-filter with water separator	●
Isolation-mounted engine	●
Radiator, oil cooler and intercooler	●

HYDRAULIC SYSTEM	ZX250LC-6
Auto power lift	●
ConSite OIL (sensor)*	●
Control valve with main relief valve	●
High mesh full flow filter	●
Pilot filter	●
Power boost	●
Suction filter	●
Swing dampener valve	●
Two extra ports for control valve	●
Variable relief valve for crusher	●
Work mode selector	●

* Engine oil and hydraulic oil monitoring sensor.

CAB	ZX250LC-6
All-weather sound suppressed steel cab	●
AM-FM radio	●
Ashtray	●
Auto control air conditioner	●
AUX function lever (Attachment)	●
AUX terminal and storage	●
Cigarette lighter 24 V	●
CRES V (Center pillar reinforced structure) cab	●
Drink holder with hot & cool function	●
Electric double horn	●
Engine shut-off switch	●
Equipped with reinforced, tinted (green color) glass windows	●
Evacuation hammer	●
Floor mat	●
Footrest	●
Front window washer	●
Glove compartment	●
Hot and cool box	●
Intermittent windshield wipers	●
Key cylinder light	●
Lever auto locking function	●
Motion alarm with cancel switch (conforms to SAE J994: 2014)	●
OPG top guard Level I (ISO 10262: 1998) compliant cab	●
Pilot control shut-off lever	●
Power outlet 12 V	●
Rain guard (without OPG front guard)	●
Retractable seat belt 3 in.	●
ROPS (ISO 12117-2: 2008) compliant cab	●
Rubber radio antenna	●
Seat: air suspension seat with heater	●
Seat adjustment part: backrest, armrest, height and angle, slide forward/back	●
Short wrist control levers	●
Sun visor (multi-use front or side and rear window)	●
Transparent roof with slide curtain	●
USB power supply	●
Windows on front, upper, lower and left side can be opened	●
2 speakers	●
4 fluid-filled elastic mounts	●

MONITOR SYSTEM	ZX250LC-6
Alarms: overheat, engine warning, engine oil pressure, alternator, minimum fuel level, hydraulic filter restriction, air filter restriction, work mode, SCR system trouble, etc.	●
Alarm buzzers: overheat, engine oil pressure, SCR system trouble, etc.	●
Display of meters: water temperature, hour, fuel rate, clock, DEF/AdBlue® rate, etc.	●
Other displays: work mode, auto-idle, glow, rearview monitor, operating conditions, etc.	●
32-language selection	●

LIGHTS	ZX250LC-6
Additional boom LED light with cover	●
Additional cab roof front LED lights	●
LED lights for camera (side and rear view camera)	●
2 working LED lights	●

UPPERSTRUCTURE	ZX250LC-6
AERIAL ANGLE® (270-degree view camera system)	●
Batteries 2 x 126 Ah	●
Battery disconnect switch	●
Body top handrail	●
Counterweight 13,669 lbs. (6,200 kg)	●
Fuel level float	●
Hydraulic oil level gauge	●
Lockable fuel refilling cap	●
Lockable machine covers	●
Platform handrail	●
Rearview mirror (right and left)	●
Skid-resistant plates and handrails	●
Swing parking brake	●
Undercover	●
Utility space	●

VISIT SITE NOW >>



VISIT SITE NOW >>

ZX250LC-6 EQUIPMENT

● : Standard equipment ○ : Optional equipment

UNDERCARRIAGE ZX250LC-6

Bolt-on sprocket	●
Reinforced track links with pin seals	●
Shoe: 32" (800 mm) triple grouser	●
Travel direction mark on track frame	●
Travel motor covers	●
Travel parking brake	●
Upper and lower rollers	●
3 track guards (each side) and hydraulic track adjuster	●
4 tie down brackets	●

ATTACHMENTS ZX250LC-6

Attachment basic piping	●
Breaker and crusher piping	●

MISCELLANEOUS ZX250LC-6

ConSite	○
Global e-Service	●
Onboard information controller	●
Standard tool kit	●

FRONT ATTACHMENTS ZX250LC-6

Arm 11' 10" (3.61 m)	●
Boom 19' 8" H (6.0 m H)	●
Casted bucket link A	●
Centralized lubrication system	●
Dirt seal on all bucket pins	●
Flanged pin	●
HN bushing	●
Reinforced bucket link B	●
Reinforced resin thrust plate	●
WC (tungsten-carbide) thermal spraying	●

Standard and optional equipment may vary by country, so please consult your Hitachi dealer for details.

Net engine power is with standard equipment including air cleaner, exhaust system, alternator and cooling fan, at test conditions specified per ISO 9249: 2007. No derating is required up to 6,600 ft. (2,000 m) altitude.

Specifications and design subject to change without notice. Wherever applicable, specifications are in accordance with SAE standards. Except where otherwise noted, these specifications are based on units with 11' 10" (3.61 m) Arms; 44" (1,130 mm), 1,878 lb (852kg) buckets; 13,669 lb (6,200 kg) counterweights; full fuel tanks; 165 lb (75 kg) operators; and a ZX250LC-6 unit with 32" (800 mm) triple grouser shoes.

VISIT SITE NOW >>