



HAWK

Reach Beyond, with HAWK.

VISIT SITE NOW »



JOHN DEERE

300G **LC**
Excavator

VISIT SITE NOW »

www.hawkexcavator.com

| (713) 230 8725

| info@hawkexcavator.com



HAWK

Reach Beyond, with HAWK.

VISIT SITE NOW >>

300G LC

Engine	300G LC		
	Base engine for use in U.S., U.S. Territories, and Canada		
Manufacturer and Model	John Deere PowerTech™ PSS 6.8L, 6068HT107		
Non-Road Emission Standard	EPA Final Tier 4/EU Stage IV		
Net Rated Power (ISO 9249)	166 kW (223 hp) at 1,900 rpm		
Cylinders	6		
Displacement	6.8 L (415 cu. in.)		
Off-Level Capacity	70% (35 deg.)		
Aspiration	Series turbocharged, air-to-air charge-air cooler		
Cooling			
	Cool-on-demand hydraulic-driven, suction-type fan with remote-mounted drive		
Powertrain			
	2-speed propel with automatic shift		
Maximum Travel Speed			
Low	3.1 km/h (1.9 mph)		
High	5.2 km/h (3.2 mph)		
Drawbar Pull	25 085 kg (55,303 lb.)		
Hydraulics			
	Open center, load sensing		
Main Pumps	2 variable-displacement pumps		
Maximum Rated Flow	236 L/m (62.3 gpm) x 2		
System Operating Pressure			
Circuits			
Implement	34 300 kPa (4,975 psi)		
Travel	35 500 kPa (5,149 psi)		
Swing	33 300 kPa (4,830 psi)		
Power Boost	38 000 kPa (5,511 psi)		
Controls	Pilot levers, short stroke, low-effort hydraulic pilot controls with shutoff lever		
Cylinders			
	<i>Bore</i>	<i>Rod Diameter</i>	<i>Stroke</i>
Boom (2)	135 mm (5.3 in.)	95 mm (3.7 in.)	1422 mm (56.0 in.)
Arm (1)	150 mm (5.9 in.)	105 mm (4.1 in.)	1659 mm (65.3 in.)
Bucket (1)	135 mm (5.3 in.)	90 mm (3.5 in.)	1070 mm (42.1 in.)
Electrical			
Number of Batteries (12 volt)	2		
Battery Capacity	1,000 CCA		
Alternator Rating	100 amp		
Work Lights	2 halogen (one mounted on left-hand side of boom, one on frame)		
Undercarriage			
Rollers (each side)			
Carrier	2		
Track	8		
Shoes, Triple Semi-Grousers (each side)	48		
Track			
Adjustment	Hydraulic		
Guides	2 per side		
Chain	Sealed and lubricated		
Ground Pressure			
Triple Semi-Grouser Shoes			
700 mm (28 in.)	50.0 kPa (7.26 psi)		
800 mm (32 in.)	43.8 kPa (6.35 psi)		

VISIT SITE NOW >>



HAWK

Reach Beyond, with HAWK.

VISIT SITE NOW >>



Swing Mechanism	300G LC
Speed	10.3 rpm
Torque	90 500 Nm (66,749 lb.-ft.)

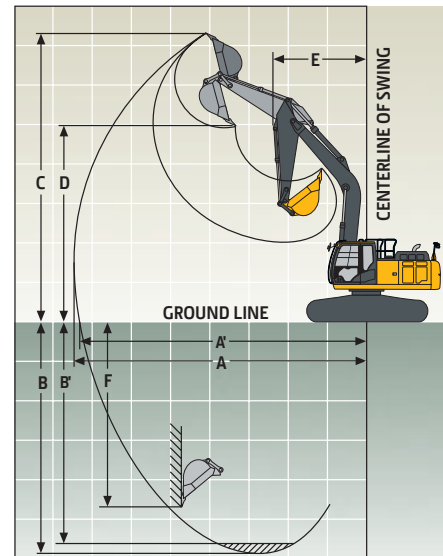
Serviceability	
5H 00	
Diesel Tank	514 L (136 gal.)
Diesel Exhaust Fluid (DEF) Tank	35 L (9.2 gal.)
Cooling System	36 L (9.5 gal.)
Engine Oil with Filter	20.5 L (5 gal.)
Hydraulic Tank	156 L (41 gal.)
Hydraulic System	290 L (77 gal.)
Swing Drive	12 L (12.7 qt.)
Gearbox	
Propel (each)	9.2 L (9.7 qt.)
Pump Drive	1.1 L (1.2 qt.)

Operating Weights	
With full fuel tank; 79-kg (175 lb.) operator; 1.44-m ³ (1.88 cu. yd.), 1067-mm (42 in.), 1158-kg (2,553 lb.) bucket; 3.76-m (12 ft. 4 in.) arm; 5600-kg (12,346 lb.) counterweight; and 800-mm (32 in.) triple semi-grouser shoes	
Operating Weight	31 150 kg (68,674 lb.)

Component Weights	
Undercarriage with Triple Semi-Grouser Shoes	
700 mm (28 in.)	11 478 kg (25,305 lb.)
800 mm (32 in.)	11 881 kg (26,193 lb.)
One-Piece Boom (with arm cylinder)	2322 kg (5,119 lb.)
Arm with Bucket Cylinder and Linkage	
3.11 m (10 ft. 2 in.)	1288 kg (2,840 lb.)
3.76 m (12 ft. 4 in.)	1377 kg (3,036 lb.)
Boom-Lift Cylinders (2), Total Weight	490 kg (1,080 lb.)

Operating Dimensions		
Arm Length	<i>3.11 m (10 ft. 2 in.)</i>	<i>3.76 m (12 ft. 4 in.)</i>

Arm Digging Force		
SAE	138 kN (31,024 lb.)	121 kN (27,202 lb.)
ISO	144 kN (32,372 lb.)	127 kN (28,551 lb.)
Bucket Digging Force		
SAE	175 kN (39,342 lb.)	175 kN (39,342 lb.)
ISO	202 kN (45,411 lb.)	202 kN (45,411 lb.)
A	Maximum Reach	10.71 m (35 ft. 2 in.) / 11.27 m (37 ft. 0 in.)
A^l	Maximum Reach at Ground Level	10.52 m (34 ft. 6 in.) / 11.09 m (36 ft. 5 in.)
B	Maximum Digging Depth	7.22 m (23 ft. 8 in.) / 7.87 m (25 ft. 10 in.)
B^l	Maximum Digging Depth at 2.44-m (8 ft. 0 in.) Flat Bottom	7.04 m (23 ft. 1 in.) / 7.71 m (25 ft. 4 in.)
C	Maximum Cutting Height	10.27 m (33 ft. 8 in.) / 10.47 m (34 ft. 4 in.)
D	Maximum Dumping Height	7.33 m (24 ft. 1 in.) / 7.54 m (24 ft. 9 in.)
E	Minimum Swing Radius	3.90 m (12 ft. 10 in.) / 3.89 m (12 ft. 9 in.)
F	Maximum Vertical Wall	6.48 m (21 ft. 3 in.) / 7.05 m (23 ft. 2 in.)

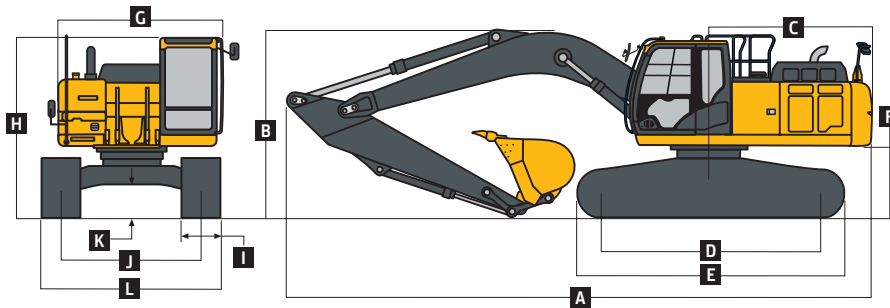


VISIT SITE NOW >>



VISIT SITE NOW >>

Machine Dimensions	300G LC	
Arm Length	3.11 m (10 ft. 2 in.)	3.76 m (12 ft. 4 in.)
A Overall Length	10.66 m (35 ft. 0 in.)	10.71 m (35 ft. 2 in.)
B Overall Height	3.20 m (10 ft. 6 in.)	3.38 m (11 ft. 1 in.)
C Tail-Swing Radius	3.25 m (10 ft. 8 in.)	
D Distance Between Idler/Sprocket Centerline	4.05 m (13 ft. 3 in.)	
E Undercarriage Length	4.94 m (16 ft. 2 in.)	
F Counterweight Clearance	1.17 m (3 ft. 10 in.)	
G Upperstructure Width	2.99 m (9 ft. 10 in.)	
H Cab Height	3.11 m (10 ft. 2 in.)	
I Track Width with Triple Semi-Grouser Shoes	700 mm (28 in.) / 800 mm (32 in.)	
J Gauge Width	1.99 m (6 ft. 6 in.)	
K Ground Clearance	0.51 m (20 in.)	
L Overall Width with Triple Semi-Grouser Shoes		
700 mm (28 in.)	3.29 m (10 ft. 10 in.)	
800 mm (32 in.)	3.39 m (11 ft. 1 in.)	



Lift Capacities

Boldface type indicates hydraulically limited capacity; **lightface type** indicates stability-limited capacities, in kg (lb.). Ratings at bucket lift hook; machine equipped with 957-kg (2,110 lb.) bucket; standard gauge; and situated on firm, uniform supporting surface. Total load includes weight of cables, hook, etc. Figures do not exceed 87 percent of hydraulic capacities or 75 percent of weight needed to tip machine. All lift capacities are based on ISO 10567.

Load Point Height	1.5 m (5 ft.)		3.0 m (10 ft.)		4.5 m (15 ft.)		6.0 m (20 ft.)		7.5 m (25 ft.)		9.0 m (30 ft.)	
	Over Front	Over Side	Over Front	Over Side	Over Front	Over Side	Over Front	Over Side	Over Front	Over Side	Over Front	Over Side
<i>With 3.11-m (10 ft. 2 in.) arm and 700-mm (28 in.) shoes</i>												
6.0 m (20 ft.)							6300	6300	6130	5290		
							(13,760)	(13,760)	(13,190)	(11,340)		
4.5 m (15 ft.)					9000	9000	7370	7370	6570	5150		
					(19,330)	(19,330)	(15,970)	(15,970)	(14,330)	(11,070)		
3.0 m (10 ft.)					11 980	11 200	8770	7120	7270	4950	4730	3590
					(25,720)	(24,150)	(18,960)	(15,350)	(15,800)	(10,650)		
1.5 m (5 ft.)					14 400	10 460	10 090	6750	7980	4750	5570	3500
					(31,030)	(22,520)	(21,810)	(14,530)	(17,150)	(10,220)		
Ground Line					15 450	10 110	10 950	6500	7810	4610		
					(33,420)	(21,740)	(23,690)	(13,980)	(16,800)	(9,910)		
-1.5 m (-5 ft.)	5990	5990	9420	9420	15 380	10 030	11 090	6390	7740	4540		
	(13,420)	(13,420)	(21,410)	(21,410)	(33,320)	(21,550)	(23,820)	(13,750)	(16,650)	(9,770)		
-3.0 m (-10 ft.)	11 070	11 070	15 650	15 650	14 370	10 120	10 620	6420	7800	4590		
	(24,860)	(24,860)	(35,600)	(35,600)	(31,100)	(21,740)	(22,910)	(13,810)				
-4.5 m (-15 ft.)			16 830	16 830	12 110	10 370	8730	6610				
			(36,190)	(36,190)	(25,970)	(22,320)	(18,420)	(14,280)				
<i>With 3.11-m (10 ft. 2 in.) arm and 800-mm (32 in.) shoes</i>												
6.0 m (20 ft.)							6300	6300	6130	5360		
							(13,760)	(13,760)	(13,190)	(11,480)		
4.5 m (15 ft.)					9000	9000	7370	7370	6570	5220		
					(19,330)	(19,330)	(15,970)	(15,970)	(14,330)	(11,210)		
3.0 m (10 ft.)					11 980	11 330	8770	7210	7270	5020	4730	3640
					(25,720)	(24,420)	(18,960)	(15,530)	(15,800)	(10,790)		
1.5 m (5 ft.)					14 400	10 590	10 090	6830	7990	4820	5570	3550
					(31,030)	(22,800)	(21,810)	(14,720)	(17,330)	(10,360)		
Ground Line					15 450	10 240	10 950	6580	7910	4670		
					(33,420)	(22,020)	(23,690)	(14,170)	(17,020)	(10,050)		
-1.5 m (-5 ft.)	5990	5990	9420	9420	15 380	10 160	11 170	6470	7840	4600		
	(13,420)	(13,420)	(21,410)	(21,410)	(33,320)	(21,830)	(24,120)	(13,930)	(16,860)	(9,910)		
-3.0 m (-10 ft.)	11 070	11 070	15 650	15 650	14 370	10 240	10 620	6500	7900	4660		
	(24,860)	(24,860)	(35,600)	(35,600)	(31,100)	(22,020)	(22,910)	(14,000)				
-4.5 m (-15 ft.)			16 830	16 830	12 110	10 500	8730	6700				
			(36,190)	(36,190)	(25,970)	(22,590)	(18,420)	(14,470)				

VISIT SITE NOW >>



HAWK

Reach Beyond, with HAWK.

VISIT SITE NOW >>

Lift Capacities (continued) 300G LC

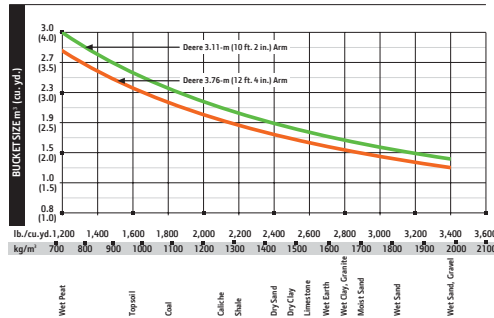
Loadface type indicates hydraulically limited capacity; **lightface type** indicates stability-limited capacities, in kg (lb.). Ratings at bucket lift hook; machine equipped with 957-kg (2,110 lb.) bucket; standard gauge; and situated on firm, uniform supporting surface. Total load includes weight of cables, hook, etc. Figures do not exceed 87 percent of hydraulic capacities or 75 percent of weight needed to tip machine. All lift capacities are based on ISO 10567.

Load Point Height	1.5 m (5 ft.)		3.0 m (10 ft.)		4.5 m (15 ft.)		6.0 m (20 ft.)		7.5 m (25 ft.)		9.0 m (30 ft.)		
	Over Front	Over Side	Over Front	Over Side	Over Front	Over Side	Over Front	Over Side	Over Front	Over Side	Over Front	Over Side	
<i>With 3.76-m (12 ft. 4 in.) arm and 700-mm (28 in.) shoes</i>													
7.5 m (25 ft.)										4330	4330		
6.0 m (20 ft.)										5410 (11,880)	5400 (11,570)		
4.5 m (15 ft.)								6530 (14,150)	6530 (14,150)	5950 (12,970)	5230 (11,240)	4420 (8,520)	3720 (7,950)
3.0 m (10 ft.)					10 590 (22,740)	10 590 (22,740)	8000 (17,300)	7260 (15,630)	6730 (14,630)	5010 (10,770)	5700 (11,530)	3620 (7,740)	
1.5 m (5 ft.)					13 380 (28,820)	10 670 (23,250)	9470 (20,480)	10 670 (23,250)	9470 (20,480)	7560 (16,390)		5920 (12,710)	3500 (7,500)
Ground Line			5670 (12,640)	5670 (12,640)	5670 (12,640)	5670 (12,640)	15 000 (32,430)	10 160 (22,270)	10 570 (22,870)	6520 (14,020)	4600 (10,200)	3400 (7,300)	
-1.5 m (-5 ft.)	5650 (12,640)	5650 (12,640)	9100 (20,640)	9100 (20,640)	9100 (20,640)	15 440 (33,440)	9970 (21,420)	11 050 (23,730)	6350 (13,650)	7690 (16,530)	4490 (9,650)	5050 (11,000)	3360 (7,300)
-3.0 m (-10 ft.)	9450 (21,200)	9450 (21,200)	13 660 (30,100)	13 660 (30,100)	13 660 (30,100)	14 900 (32,250)	9970 (21,440)	10 890 (23,530)	6320 (13,590)				
-4.5 m (-15 ft.)	14 050 (31,670)	14 050 (31,670)	19 080 (41,110)	19 080 (41,110)	19 080 (41,110)	13 270 (28,560)	10 150 (22,110)	9720 (20,810)	6430 (14,040)				
-6.0 m (-20 ft.)			13 820	13 820		9700 (20,230)	9700 (20,230)						
<i>With 3.76-m (12 ft. 4 in.) arm and 800-mm (32 in.) shoes</i>													
7.5 m (25 ft.)										4330	4330		
6.0 m (20 ft.)										5410 (11,880)	5410 (11,710)		
4.5 m (15 ft.)								6530 (14,150)	6530 (14,150)	5950 (12,970)	5300 (11,530)	4420 (8,520)	3770 (7,950)
3.0 m (10 ft.)					10 590 (22,740)	10 590 (22,740)	8000 (17,300)	7340 (15,630)	6730 (14,630)	5010 (10,910)	5700 (11,530)	3670 (7,740)	
1.5 m (5 ft.)					13 380 (28,820)	10 670 (23,250)	9470 (20,480)	10 670 (23,250)	9470 (20,480)	7560 (16,390)	6000 (10,420)	3550 (7,610)	
Ground Line			5670 (12,640)	5670 (12,640)	5670 (12,640)	5670 (12,640)	15 000 (32,430)	10 290 (22,130)	10 570 (22,870)	6600 (14,210)	4660 (10,020)	5900 (12,670)	3450 (7,410)
-1.5 m (-5 ft.)	5650 (12,640)	5650 (12,640)	9100 (20,640)	9100 (20,640)	9100 (20,640)	15 440 (33,440)	10 090 (21,690)	11 080 (23,980)	6430 (16,750)	7790 (16,750)	4550 (9,790)	5050 (11,000)	3410 (7,300)
-3.0 m (-10 ft.)	9450 (21,200)	9450 (21,200)	13 660 (30,100)	13 660 (30,100)	13 660 (30,100)	14 900 (32,250)	10 100 (21,710)	10 890 (23,530)	6400 (16,740)		4540		
-4.5 m (-15 ft.)	14 050 (31,670)	14 050 (31,670)	19 080 (41,110)	19 080 (41,110)	19 080 (41,110)	13 270 (28,560)	10 150 (22,110)	9720 (20,810)	6510 (14,040)				
-6.0 m (-20 ft.)			13 820	13 820		9700 (20,230)	9700 (20,230)						

Buckets
A full line of buckets is offered to meet a wide variety of applications. Digging forces are with power boost. Buckets are equipped with John Deere TK-Series Bucket Teeth standard. Replaceable cutting edges and a variety of teeth are available through John Deere Parts. Optional side cutters add 150 mm (6 in.) to bucket widths. Capacities are SAE heaped ratings.

Type Bucket	Bucket Width		Bucket Capacity		Bucket Weight		Bucket Dig Force	Arm Dig Force 3.11 m (10 ft. 2 in.)		Arm Dig Force 3.76 m (12 ft. 4 in.)		Bucket Tip Radius		Number of Teeth
	mm	in.	m ³	cu. yd.	kg	lb.		kN	lb.	kN	lb.	mm	in.	
Heavy Duty	914	36	1.23	0.94	1010	2,226	42,653	144.1	32,397	125.1	1661	65.39	4	
	1067	42	1.52	1.16	1147	2,530	42,653	144.1	32,397	125.1	1661	65.39	5	
	1219				1213	2,675	42,653	144.1	32,397	125.1	1661	65.39	5	
	1372	54	2.09	1.60			42,653	144.1	32,397	125.1	1661	65.39	6	

Bucket Selection Guide*



*Consult your John Deere dealer for optimum bucket and attachment selection. These recommendations are for general conditions and average use. Does not include optional equipment such as thumbs or couplers. Larger buckets may be possible when using light materials, for flat and level operations, less compacted materials, and volume loading applications such as mass excavation applications in ideal conditions. Smaller buckets are recommended for adverse conditions such as off-level applications, rocks, and uneven surfaces. Bucket capacity indicated is SAE heaped.

VISIT SITE NOW >>



VISIT SITE NOW >>

Additional equipment

Key: ● Standard ▲ Optional or special

See your John Deere dealer for further information.

250G 300G Engine

- ● Auto-idle system
- ● Automatic belt-tension device
- ● Batteries (2 – 12 volt)
- ● Coolant recovery tank
- ● Dual-element dry-type air filter
- ● Electronic engine control
- ● Enclosed fan guard (conforms to SAE J1308)
- ● Engine coolant to –37 deg. C (–34 deg. F)
- ● Programmable auto shutdown
- ● Fuel filter with water separator
- ● Full-flow oil filter
- ● Turbocharger with charge air cooler
- ● Cool-on-demand hydraulic-driven fan
- ● Glow-plug start aid
- ● 500-hour engine-oil-change interval
- ● 70% (35 deg.) off-level capability
- ● Engine-oil-sampling valve
- ▲ ▲ Hydraulic fan reverser
- ▲ ▲ Chrome exhaust stack
- ▲ ▲ Engine coolant heater
- ▲ ▲ Severe-duty fuel filter

Hydraulic System

- ● Reduced-drift valve for boom down, arm in
- ● Auxiliary hydraulic valve section
- ● Spring-applied, hydraulically released automatic swing brake
- ● Auxiliary hydraulic-fow adjustments through monitor
- ● Auto power lift
- ● 5,000-hour hydraulic-oil-change interval
- ● Hydraulic-oil-sampling valve
- ▲ ▲ Auxiliary hydraulic lines
- ▲ ▲ Auxiliary pilot and electric controls
- ▲ ▲ Hydraulic filter restriction indicator kit
- ▲ ▲ Load-lowering control / Anti-drift device
- ▲ ▲ Single-pedal propel control
- ▲ ▲ Control pattern change valve

Undercarriage

- ● Planetary drive with axial piston motors
- ● Propel motor shields
- ● Spring-applied, hydraulically released automatic propel brake
- ● Track guides, front idler and center
- ● 2-speed propel with automatic shift
- ● Upper carrier rollers (2)
- ● Sealed and lubricated track chain
- ▲ ▲ Triple semi-grouser shoes, 600 mm (24 in.)

250G 300G Undercarriage (continued)

- ● Triple semi-grouser shoes, 700 mm (28 in.)
- ● Triple semi-grouser shoes, 800 mm (32 in.)

Upperstructure

- ● Right-hand, left-hand, and counter-weight mirrors
- ● Vandal locks with ignition key: Cab door / Service doors / Toolbox
- ● Debris screen in side panel
- ● Remote-mounted engine oil and fuel filters
- ▲ ▲ "D" channel guard

Front Attachments

- ● Centralized lubrication system
- ● Dirt seals on all bucket pins
- ● Less boom and arm
- ● Oil-impregnated bushings
- ● Reinforced resin thrust plates
- ● Tungsten carbide thermal coating on arm-to-bucket joint
- ▲ ▲ Arm, 2.50 m (8 ft. 2 in.)
- ▲ ▲ Arm, 2.96 m (9 ft. 9 in.)
- ▲ ▲ Arm, 3.11 m (10 ft. 2 in.)
- ▲ ▲ Arm, 3.61 m (11 ft. 10 in.)
- ▲ ▲ Arm, 3.76 m (12 ft. 4 in.)
- ▲ ▲ Attachment quick-couplers
- ▲ ▲ Boom cylinder with plumbing to main-frame for less boom and arm
- ▲ ▲ Buckets: Heavy duty / Heavy-duty high capacity / Side cutters and teeth
- ▲ ▲ Material clamps
- ▲ ▲ Super-long fronts

Operator's Station

- ● Adjustable independent-control positions (levers-to-seat, seat-to-pedals)
- ● AM/FM radio
- ● Auto climate control/air conditioner/heater/pressurizer
- ● Built-in Operator's Manual storage compartment and manual
- ● Cell-phone power outlet, 12 volt, 60 watt, 5 amp
- ● Coat hook
- ● Deluxe suspension cloth seat with 100-mm (4 in.) adjustable armrests
- ● Floor mat
- ● Front windshield wiper with intermittent speeds
- ● Gauges (illuminated): Diesel Exhaust Fluid (DEF) / Engine coolant / Fuel
- ● Horn, electric
- ● Hourmeter, electric
- ● Hydraulic shutoff lever, all controls
- ● Hydraulic warm-up control

250G 300G Operator's Station (continued)

- ● Interior light
- ● Large cup holder
- ● Machine Information Center (MIC)
- ● Mode selectors (illuminated): Power modes – 3 / Travel modes – 2 with automatic shift / Work mode – one
- ● Multifunction, color LCD monitor with: Diagnostic capability / Multiple-language capabilities / Maintenance tracking / Clock / System monitoring with alarm features: Auto-idle indicator, engine air cleaner restriction indicator light, engine check, engine coolant temperature indicator light with audible alarm, engine oil pressure indicator light with audible alarm, low-alternator-charge indicator light, low-fuel indicator light, low DEF indication with audible alarm, fault code alert indicator, fuel-rate display, wiper-mode indicator, work-lights-on indicator, and work-mode indicator
- ● Motion alarm with cancel switch (conforms to SAE J994)
- ● Power-boost switch on right console lever
- ● Auxiliary hydraulic control switches in right console lever
- ● SAE 2-lever control pattern
- ● Seat belt, 51 mm (2 in.), retractable
- ● Tinted glass
- ● Transparent tinted overhead hatch
- ● Hot/cold beverage compartment
- ▲ ▲ Air-suspension heated seat
- ▲ ▲ Hydraulic oil filter restriction indicator light
- ▲ ▲ Protection screens for cab front, rear, and side
- ▲ ▲ Seat belt, 76 mm (3 in.), non-retractable
- ▲ ▲ Window vandal-protection covers

Electrical

- ● 100-amp alternator
- ● Blade-type multi-fused circuits
- ● Positive-terminal battery covers
- ● Battery-disconnect switch
- ● JDLink™ Ultimate wireless communication system (available in specific countries; see your dealer for details)
- ▲ ▲ Rearview camera
- ▲ ▲ Cab extension wiring harness

Lights

- ● Work lights: Halogen / One mounted on boom / One mounted on frame
- ▲ ▲ 2 lights mounted on cab / One mounted on right side of boom / One mounted under engine hood

VISIT SITE NOW >>