



HAWK

Reach Beyond, with HAWK.

VISIT SITE NOW >>

CASE

CONSTRUCTION

**C-SERIES HYDRAULIC EXCAVATORS
CX210C | CX250C**

**QUALITY
YOU CAN TRUST**

www.casece.com

**EXPERTS FOR THE REAL WORLD
SINCE 1842**

VISIT SITE NOW >>

www.hawkexcavator.com | (713) 230 8725 | info@hawkexcavator.com



HAWK

Reach Beyond, with HAWK.

[VISIT SITE NOW >>](#)

MAIN REASONS TO CHOOSE THE C-SERIES



HIGH EFFICIENCY

A combination of engine technology and Advanced Hydraulic System grants 10% of fuel economy. With the 5 Energy Saving Controls, Isuzu Tier IV Interim engine and the new ECO gauge function.



HIGH RELIABILITY

- New HD boom and arm design: more robust and reinforced to optimize durability and performance;
 - Re-designed attachment for more durability: less maintenance cost, higher resale value.
- With the CASE top manufacturing quality.



HIGH PRECISION AND CONTROLLABILITY

- Advanced Hydraulic System;
- Unique pump torque control system;
- Advanced energy management with innovative fuel saving functions;
- 3 available power modes to match customers needs.



[VISIT SITE NOW >>](#)



HAWK

Reach Beyond, with HAWK.

VISIT SITE NOW >>



MAXIMUM COMFORT

Extra large cab: 7% more space Vs previous model.
Low noise and vibrations.
Ergonomic workstation.
Real time parameters monitoring.
Fully adjustable seat/joysticks and brand new LCD cluster.



SAFETY FIRST

- A full range of optional front guards;
- Superior visibility;
- Standard Rear view camera.

With Standard Rops cab and Fops, level II certified.



HIGH VERSATILITY

- Standard Flow Regulation;
- Up to 10 attachments settings can be memorized;

Optional Clamshell circuit;

- MULTI-FITS (safe, automatic and universal).



LOW TOTAL COST OF OWNERSHIP AND REPAIR COST

- Cab filters access form
- Standard EMS (Easy Maintenance System) bushings
- Long maintenance intervals
- Low effort for serviceability
- Good service access, onboard diagnosis



VISIT SITE NOW >>



HAWK

Reach Beyond, with HAWK.

VISIT SITE NOW >>



THE CASE DEALER: YOUR PROFESSIONAL PARTNER

Your success starts with world-class Case machinery and attachments.

Your Case dealer will help you work smarter and faster by selecting equipment that delivers performance and operator comfort.

Your dealer has the knowledge and experience necessary to help you choose the right attachments so you can...

- **Work faster and extend equipment life.**
- **Increase machine utilization.**
- **Increase your capabilities.**

Let your Case dealer service your machine on the jobsite.

You'll be back on the job faster.

Advantages include...

- **Responsive job site service to keep your equipment running.**
- **Increase machine uptime.**
- **Certified service staff and improved parts availability.**

VISIT SITE NOW >>



[VISIT SITE NOW >>](#)

SPECIFICATIONS

CX210C

ENGINE

Model _____ ISUZU AM-4HK1X
 Type _____ Water-cooled, 4-cycle diesel, 4-cylinder in line,
 Electronically controlled, high pressure common rail system, variable
 geometry turbocharger, air cooled intercooler, dual exhaust gas recirculation,
 DPD system with auto-regeneration.
 Emission certified _____ Tier IV Interim
 Displacement _____ 5.19 l
 Bore/Stroke _____ 115 x 125 mm
 Horsepower ISO 9249 (net) _____ 119 kW/160 hp at 1800 min⁻¹
 Maximum torque ISO 9249 (net) _____ 621 Nm at 1500 min⁻¹

HYDRAULIC SYSTEM

Type _____ 2 variable displacement axial piston pumps with regulating system
 Max oil flow _____ 2 x 211 l/min @ 1800 min⁻¹
 Working circuit pressure _____
 Boom/Arm/Bucket circuit _____ 34.3 MPa
 Boom/Arm/Bucket (with Power Boost) _____ 36.8 MPa
 Swing circuit _____ 29.4 MPa
 Travel circuit _____ 34.3 MPa

SWING

Maximum swing speed _____ 11.5 min⁻¹
 Swing torque _____ 64000 Nm

FILTERS

Suction filter _____ 105 µm
 Return filter _____ 6 µm
 Pilot line filter _____ 8 µm

WEIGHT

With 2.94 m Arm, 0.8 m³ bucket, 600 mm grouser shoe, operator, lubricant, coolant, full fuel tank and top guard OPG level 2

TRAVEL

Travel motor _____ Variable displacement axial piston motor (automatic travel
 speed shifting)
 Max travel speed _____ 5.6 km/h
 Low travel speed _____ 3.4 km/h
 Gradeability _____ 70% (35°)
 Drawbar pull _____ 188 kN

ELECTRICAL SYSTEM

Circuit _____ 24V
 Alternator _____ 50 Amp
 Starter motor _____ 5.0 kW
 Battery _____ 2x12V 92 Ah/5HR

UNDERCARRIAGE

Number of carriers rollers (each side) _____ 2
 Number of track rollers (each side) _____ 8
 Number of shoes (each side) _____ 49
 Type of shoe _____ Triple grouser shoe

CAPACITIES

Fuel tank _____ 410 l
 Hydraulic system _____ 240 l
 Cooling system _____ 30.8 l
 Engine crank case _____ 23.1 l

CX210C LC	WEIGHT (kg)	GROUND PRESSURE (MPa)
600 mm grouser shoe	21,600	0.045

[VISIT SITE NOW >>](#)



VISIT SITE NOW >>

C- SERIES HYDRAULIC EXCAVATORS

CX250C

ENGINE

Model _____ ISUZU AL-4HK1X
 Type _____ Water-cooled, 4-cycle diesel, 4-cylinder in line,
 Electronically controlled, high pressure common rail system, variable
 geometry turbocharger, air cooled intercooler, DPD system with auto-
 regeneration.
 Emission certified _____ Tier IV Interim
 Displacement _____ 5.19 l
 Bore/Stroke _____ 115 x 125 mm
 Horsepower ISO 9249 (net) _____ 132 kw @ 2000 min⁻¹
 Maximum torque ISO 9249 (net) _____ 621 Nm @ 1800 min⁻¹

HYDRAULIC SYSTEM

Max oil flow _____ 2 x 234 l/min @ 2000 min⁻¹
 Boom/Arm/Bucket circuit _____ 34.3 MPa
 Boom/Arm/Bucket circuit (with Power Boost) _____ 36.8 MPa
 Swing circuit _____ 27/28.9 MPa
 Travel circuit _____ 34.3 Mpa

SWING

Maximum swing speed _____ 10.6 rpm
 Swing torque _____ 74900 Nm

FILTERS

Suction filter _____ 105 µm
 Return filter _____ 6 µm
 Pilot line filter _____ 8 µm

WEIGHT

With 3.00 m Arm, 1.0 m³ bucket, 600 mm grouser shoe, operator, lubricant, coolant, full fuel tank and top guard OPG level 2

CX250C LC	WEIGHT (kg)	GROUND PRESSURE (MPa)
600 mm grouser shoe	25,100	0.050

TRAVEL

Travel motor _____ Variable displacement axial piston motor, automatic travel
 speed shifting
 Max travel speed _____ 5.5 km/h
 Low travel speed _____ 3.5 km/h
 Gradeability _____ 70% (35°)
 Drawbar pull _____ 201 kN

ELECTRICAL SYSTEM

Circuit _____ 24V
 Alternator _____ 50 Amp
 Starter motor _____ 5.0 kW
 Battery _____ 2x12V 92 Ah/5HR

UNDERCARRIAGE

Number of carriers rollers (each side) _____ 2
 Number of track rollers (each side) _____ 9
 Number of shoes (each side) _____ 51
 Type of shoe _____ Triple grouser shoe

CAPACITIES

Fuel tank _____ 410 l
 Hydraulic system _____ 250 l
 Cooling system _____ 30.2 l
 Engine crank case _____ 29.6 l

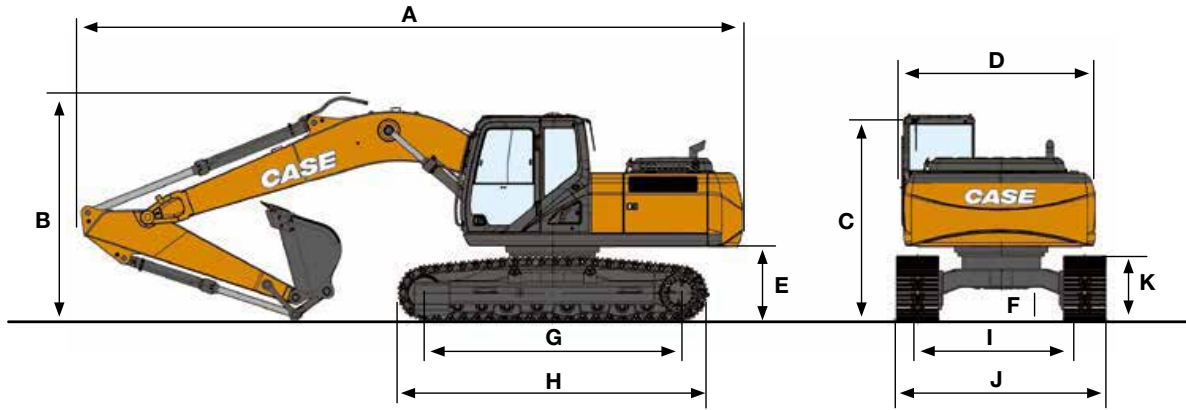
VISIT SITE NOW >>



VISIT SITE NOW >>

SPECIFICATIONS

CX210C LC

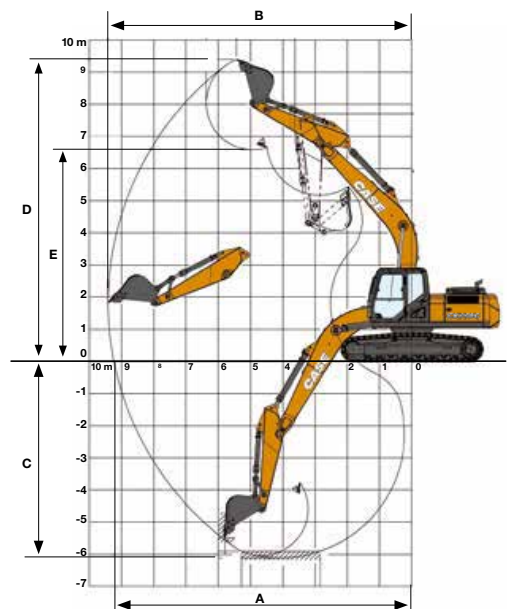


GENERAL DIMENSIONS

		Arm 2.94 m
Overall length (without attachment)	mm	4960
A Overall length (with attachment)	mm	9380
B Overall height (with attachment)	mm	3070
C Cab height	mm	3070
D Upper structure overall width	mm	2770
Swing (rear end) radius	mm	2750
E Clearance height under upper structure	mm	1040
F Minimum ground clearance	mm	440
G Wheel base (Center to center of wheels)	mm	3660
H Crawler overall length	mm	4470
K Crawler tracks height	mm	920
I Track gauge	mm	2390
J Undercarriage overall width (with 600 mm shoes)	mm	2990

PERFORMANCE DATA

		Arm 2.94 m
Boom length	mm	5700
Bucket radius	mm	1450
Bucket wrist action	°	177
A Maximum reach at GRP	mm	9730
B Maximum reach	mm	9900
C Max. digging depth	mm	6650
D Max. digging height	mm	9610
E Max. dumping height	mm	6810
Arm digging force	kN	103
Arm digging force with Power Boost	kN	110
Bucket digging force	kN	142
Bucket digging force with Power Boost	kN	152



VISIT SITE NOW >>

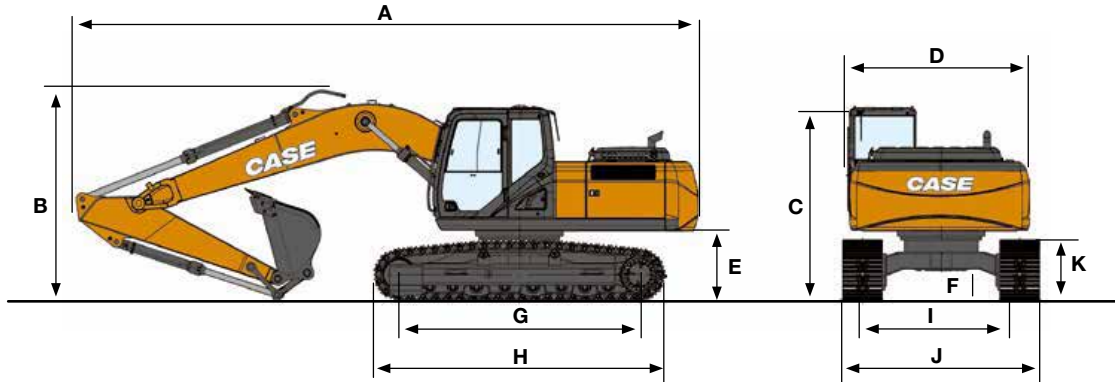


HAWK

Reach Beyond, with HAWK.

VISIT SITE NOW >>

C- SERIES HYDRAULIC EXCAVATORS CX250C LC

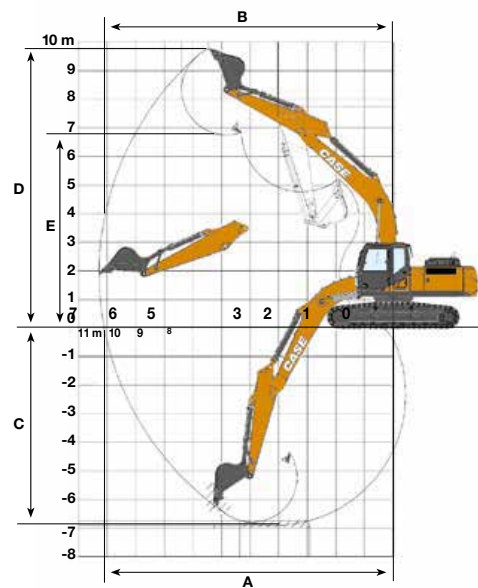


GENERAL DIMENSIONS

		Arm 3.00 m
Overall length (without attachment)	mm	5270
A Overall length (with attachment)	mm	9880
B Overall height (with attachment)	mm	3200
C Cab height	mm	3130
D Upper structure overall width	mm	2770
E Clearance height under upper structure	mm	1100
F Minimum ground clearance	mm	460
G Wheel base (Center to center of wheels)	mm	3840
H Crawler overall length	mm	4650
K Crawler tracks height	mm	940
I Track gauge	mm	2590
J Undercarriage overall width (with 600 mm shoes)	mm	3190

PERFORMANCE DATA

		Arm 3.0 m
Boom length	mm	5850
Bucket radius	mm	1570
Bucket wrist action	°	175
A Maximum reach at GRP	mm	10100
B Maximum reach	mm	10280
C Max. digging depth	mm	6900
D Max. digging height	mm	9760
E Max. dumping height	mm	6760
Arm digging force	kN	120
Arm digging force with Power Boost	kN	129
Bucket digging force	kN	162
Bucket digging force with Power Boost	kN	174



VISIT SITE NOW >>



HAWK

Reach Beyond, with HAWK.

VISIT SITE NOW >>

LIFTING CAPACITY

Front 360°	REACH													
	1.5 m		3.0 m		4.5 m		6.0 m		7.5 m		9.0 m		At max reach	

CX210C Standard arm 2.94 m, 0.80 m³ bucket (650 kg) bucket, 600 mm shoes, max reach 9.90 m

7.5 m									2970*	2970*			2190*	2190*	7,76	
6.0 m									3790*	3500			2080*	2080*	8,71	
4.5 m								4630*	4630*	4290*	3380	3140*	2370	2070*	2070*	9,28
3.0 m			9870*	9870*	7400*	7300*		5690*	4720	4760*	3230	3640	2300	2140*	2040	9,54
1.5 m	6960*	6960*	9250*	9250*	9160*	6890		6620*	4410	4840	3070	3550	2220	2280*	1990	9,53
0 m	9520*	9520*	8340*	8340*	10170*	6440		6710	4170	4690	2930	3490	2160	2520*	2050	9,28
-1.5 m	13390*	13390*	10500*	10500*	10360*	6290		6560	4030	4610	2860			2940*	2240	8,77
-3.0 m			14210*	12790	10090*	6360		6590	4080	4690	2930			3700*	2650	7,95
-4.5 m			13170*	12830	9040*	6580		6490*	4320					5220*	3450	6,79
-6.0 m					6160*	6160*								5840*	5840*	4,66

CX250C Standard arm 3 m, 1.0 m³ bucket (790 kg) bucket, 600 mm shoes, max reach 9.90 m

9.0 m									2240*	2240*			2120*	2120*	7,57
7.5 m									3300*	3300*			1890*	1890*	8,85
6.0 m									4330*	4330*	3480*	3270	1790*	1790*	9,68
4.5 m									5110*	4510	4290*	3200	1770*	1770*	10,18
3.0 m					8700*	8700*	6850*	6250	5800*	4290	4670	3080	1810*	1810*	10,41
1.5 m			13410*	13410*	11110*	9250	8110*	5860	6170	4060	4530	2950	1910*	1910*	10,4
0 m	4270*	4270*	9700*	9700*	12710*	8590	8580	5500	5950	3860	4410	2840	2100*	2100*	10,16
-1.5 m	7650*	7650*	11290*	11290*	13240*	8290	8330	5290	5810	3730	4350	2780	2400*	2400*	9,68
-3.0 m	9810*	9810*	14490*	14490*	13060*	8310	8300	5270	5810	3740			2900*	2840	8,94
-4.5 m	14320*	14320*	17920*	17210	12140*	8490	8390	5420	5930	3910			3860*	3550	7,86
-6.0 m			14120*	14120*	9730*	8720	6580*	5620					5760*	5150	6,3

* Lift capacities are taken in accordance with SAE J1097 / ISO 10567 / DIN 15019-2
 Lift capacities shown in kg do not exceed 75% of the tipping load or 87% of the hydraulic lift capacity
 Capacities that are marked with an asterisk (*) are hydraulic limited
 If the machine is equipped with a quick coupler, subtract the weight of the quick coupler from the load shown in the table to calculate the real lift capacity

VISIT SITE NOW >>



HAWK

Reach Beyond, with HAWK.

VISIT SITE NOW >>

STANDARD EQUIPMENT

ENGINE

Isuzu 4-cylinder turbo-charged diesel
Tier IV Interim
Electronic fuel injection
High pressure common rail system
Neutral safety start
Auto-engine warm up, emergency stop
Glow-plug pre-heat
EPF (Engine Protection Feature)
Dual-stage fuel filtration
Dual element air filter
Remote oil filter
Green plug oil drain
500-hour engine oil change interval
24-Volt system
Battery disconnect switch
High ambient temperature cooling package
Fuel cooler
Fuel filter restriction indicator
Idle start
Radiator, oil cooler, intercooler
Refueling Pump

FUEL ECONOMY SYSTEMS

Engine Idle/Fuel Economy System:
Auto-idle
One-touch idle
Auto-idle shut-down
Torque control
Boom Economy Control (BEC)

Swing Relief Control (SWC)
Spool Stroke Control (SSC)

HYDRAULICS

Auto power boost
Auto travel speed change
Selectable work modes
Pre-set auxiliary pump settings
Switch controlled auxiliary selection
Hydraulic filter restriction indicator
Oil cooler
5,000 hour hydraulic oil change interval
2,000 hour hydraulic filter change interval

UPPERSTRUCTURE

ISO mirrors
Handrail – RH access
ISO guard rails
Isolation mounted cab (4 point fluid mounting)
Lifting eyes for counterweight
Lockable fuel cap, service doors and toolbox
Rear and side view safety camera

UNDERCARRIAGE

600 mm steel triple grouser shoes
LC type (Long Carriage) undercarriage
Sealed link chain
Travel alarm

ATTACHMENTS

HD Monoboom
HD Arm
HD bucket linkage

Boom mounted work light
Auxiliary pipe brackets
Centralized lube bank
Attachment cushion valve

OPERATOR STATION

Pressurized cab
Safety glasses for all windows
Sun visor&rain deflector
AC/heat/defrost w/auto climate control
Hot&coolbox, cup holder & ashtray
Cloth covered air-suspension seat fully adjustable and reclinable
Adjustable armrests
Tilting consoles - 4-position
Low-effort joystick controls
Sliding cockpit
Auxiliary select system
Multifunction LCD color monitor
Anti-theft system (start code system)
Rubber floor mat
12 V electric socket /24 Vcigarette lighter
One-piece right hand window
Internal & external view mirrors
Working lights (boom&upperstructure)
Cab top working lights
Windshield wiper / washer
Storage compartments
On-board diagnostic system

OPTIONAL EQUIPMENT

HYDRAULICS

Clamshell circuit/Low-flow circuit
Single/Double acting multifunction auxiliary circuit - pedal activated (hammer/high flow)
Single acting pedal activated hammer circuit

ATTACHMENTS

Hydraulic quick coupler provision
Safety valves and HD bucket linkage with hook
Overload warning device

UNDERCARRIAGE

700 / 800 mm steel shoes

OPERATOR STATION

FOPS level II
Front cab guard - vertical bars (OPG level 2)
Front cab guard - vertical bars (OPG level 1)
Front mesh screen
AM/FM CD/radio with antenna and 2-speakers

VISIT SITE NOW >>